

ACOUSTIC INSULATION UNDER SCREED

made from high-quality elastomer granules

SOLUTIONS FOR CONSTANT LOADS UP TO 20 t/m²
AND IMPACT SOUND IMPROVEMENT UP TO 39 dB



DAMTEC®

KRAIBURG Relastec has specialised in the manufacturing of high-quality and effective products for sound and vibration insulation for decades. They are a competent partner for acoustic and vibration insulation products made of recycled rubber granules and for determining the most effective sound insulation measures. DAMTEC® products are quickly and easily installed directly under screeds and offer an impressive range of technical characteristics as a solution for a wide range of applications.

Advantages and properties



with European Technical Approval (CE label)



brilliant noise insulation with a low panel thickness; highest resiliency even after years of use



waterproofed and rot-proofed



fast and easy installation



outstanding compressive strength and load-bearing performance



permanently elastic



very low emission; very environment-friendly, recycled rubber can be recycled again

High pressure load capacity, elasticity and fast and easy installation are only a few of the outstanding properties of our impact sound insulation products. Another major advantage of DAMTEC® elastomer mats is the low thickness of 4mm to 17mm for low installation heights. This allows planners to save heights in new buildings or adapt to given conditions in the case of renovation.

In situations with high requirements for impact sound insulation our DAMTEC® screed insulation products are ideal for use in residential, industrial and commercial buildings. Rubber granules also guarantee a long life without material fatigue.

Take advantage of the specialists for acoustic insulation:

We would be happy to assist you by selecting the correct product for your requirements. According to the impact sound requirements, existing or planned floor systems / floor finishes and required screed thicknesses, we are at your disposal for any application-specific consulting to achieve the optimal impact sound insulation. In the field of large-scaled industrial projects, we are also happy to measure the impact sound improvement in connection with DAMTEC® products on-site. Simply talk to us.

DAMTEC® ACOUSTIC INSULATION

APPLICATIONS AND REFERENCE PROJECTS

Applications



production halls



shopping centres



concert halls, cinemas



fitness centers



public buildings,
convention centres



schools,
training centers



hotels



recording studios,
acoustic test laboratories

Selected reference projects

Reference	Product
Arnulfpark Munich	DAMTEC® estra
Skygarden Munich	DAMTEC® estra
Fraunhofer Institute	DAMTEC® estra 3D 8/4
Airport Mönchengladbach	DAMTEC® wave 3D 8/4
QNCC Doha	DAMTEC® estra
Several German super-markets like Lidl, Aldi, REWE, Netto, Penny, Edeka	different products
Carrefour supermarkets	DAMTEC® 3D 17/8
Crown Plaza hotels	different products
Grand Hyatt hotel	DAMTEC® estra
Intercontinental hotel	DAMTEC® estra
Savoy hotel	DAMTEC® estra
Hilton hotels	different products
Aloft Hotel Abu Dhabi	DAMTEC® estra

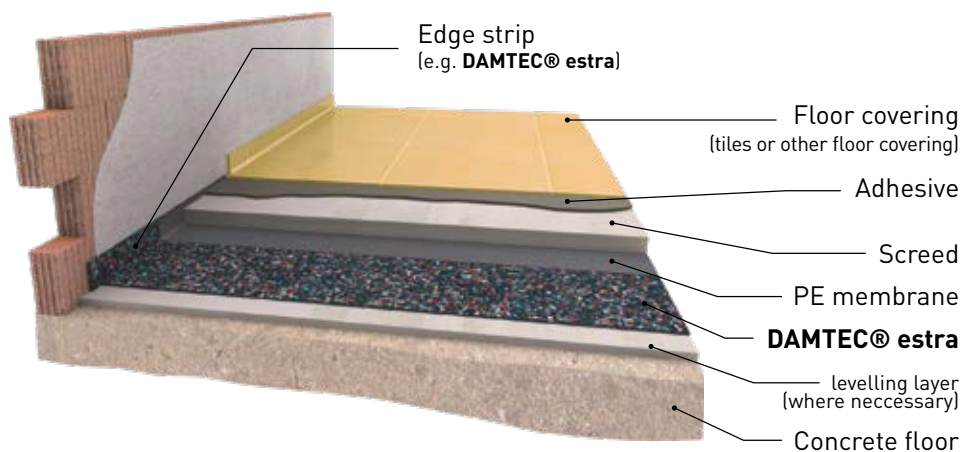
Product	ΔL_w	max. continous load	dynamic stiffness
DAMTEC® estra	19-21 dB	0.20 N/mm ²	≤ 90 MN/m ³
DAMTEC® estra 3D 8/4	22-26 dB	0.10 N/mm ²	< 20 MN/m ³
DAMTEC® 3D 17/8	26-32 dB	0.10 N/mm ²	< 15 MN/m ³
DAMTEC® wave 3D 8/4	25-30 dB	0.02 N/mm ²	< 18 MN/m ³
DAMTEC® wave 3D 17/8	32-39 dB	0.02 N/mm ²	< 10 MN/m ³

Value for impact sound improvement ΔL_w and dynamic stiffness depends on material thickness and kind of screed.

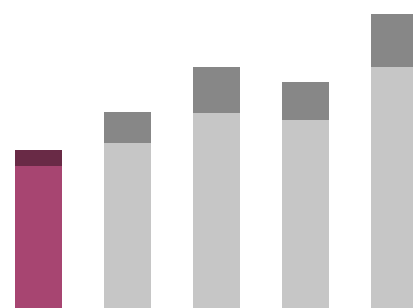


DAMTEC® estra

IMPACT SOUND IMPROVEMENT UNDER SCREED: ≤ 21 dB



Overview



19-21 dB

Material	Granules of recycled rubber with PU elastomer bonding agent
Area weight	4 mm: 2,580 - 3,160 g/m ² ; 6 mm: 3,870 - 4,730 g/m ² 8 mm: 5,160 - 6,310 g/m ²
Thicknesses	4, 6 or 8 mm (± 0.3 mm)
Roll width / Roll length	1,250 mm (± 1.5 %), on request (± 1.5 %)
Edge strip	DAMTEC® estra 8 x 250 x 8,000 mm
Maximum pressure	0.20 N/mm ² (in accordance with EN 826)
Dynamic stiffness	4 mm < 90 MN/m ³ ; 6 mm < 70 MN/m ³ ; 8 mm < 60 MN/m ³ [EN 29052]
Temperature resistance	-30° to + 80° C
Fire resistance	E _{fl} (ISO 11925/EN 13501)
Impact sound improvement ΔL_w	19 dB for 6 mm (under 35 mm screed, 70 kg/m ²) [ETA- 13/0342] 20 dB for 6 mm (under 55 mm screed, 110 kg/m ²) 21 dB for 8 mm (under 55 mm screed, 110 kg/m ²)



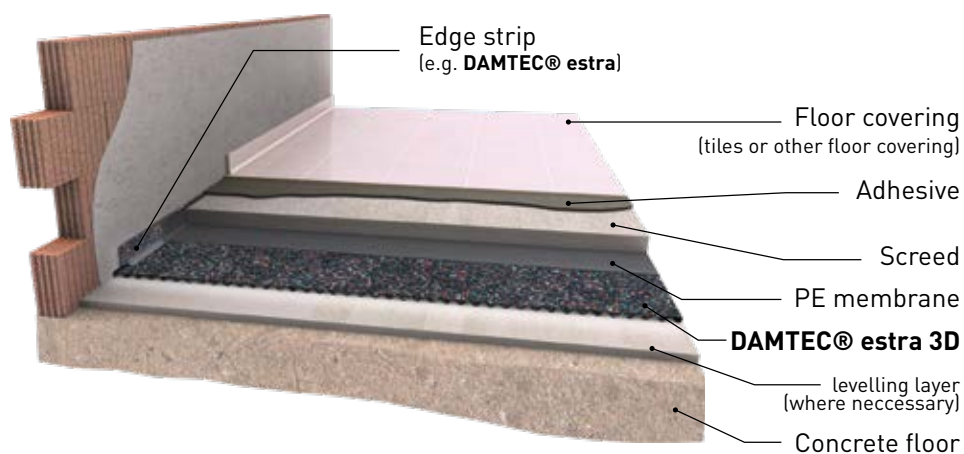
CE
ETA - 13/0342



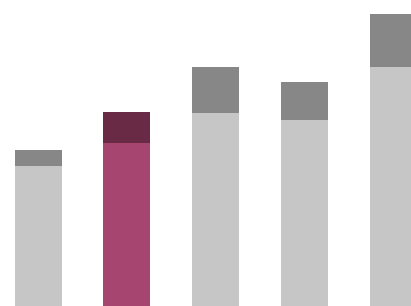


DAMTEC® extra 3D 8/4

IMPACT SOUND IMPROVEMENT UNDER SCREED: ≤ 26 dB



Overview



22-26 dB

Material	Granules of recycled rubber with PU elastomer bonding agent
Area weight	3,870 - 4,730 g/m ²
Thickness	8/4 mm (± 1.0 mm)
Roll width / Roll length	1,250 mm (± 1.5 %), on request (± 1.5 %)
Edge strip	DAMTEC® extra 8 x 250 x 8,000 mm
Lower side	wave profile
Maximum pressure	0.10 N/mm ² (in accordance with EN 826)
Dynamic stiffness	≤ 20 MN/m ³ [EN 29052]
Temperature resistance	-30° to + 80° C
Fire resistance	E _{fl} (ISO 11925/EN 13501)
Impact sound improvement ΔL_w	22dB (under 50 mm screed, 120 kg/m ²) [ETA -13/0572] 26dB (under 80 mm screed, 179 kg/m ²)



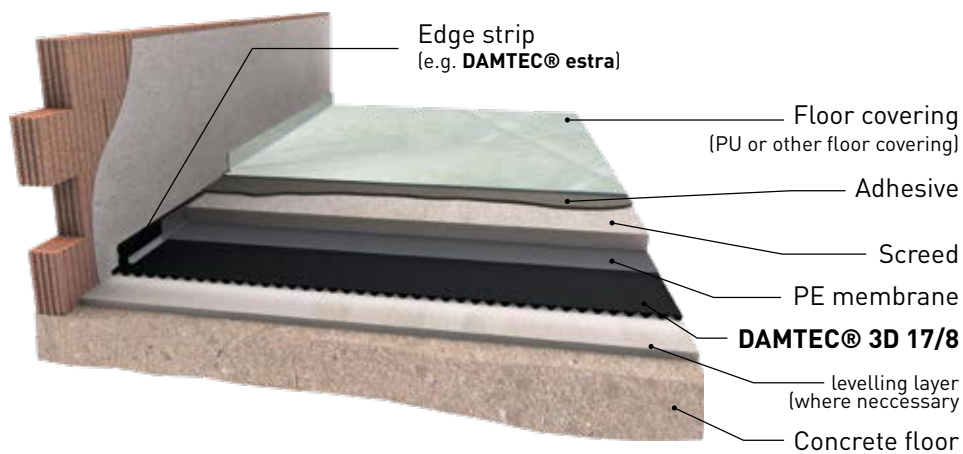
ETA - 13/0572



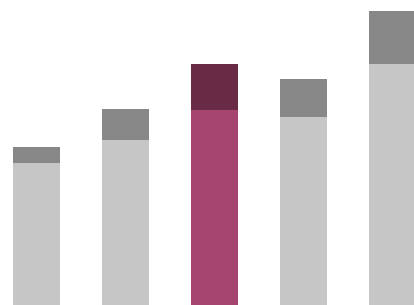


DAMTEC® 3D 17/8

IMPACT SOUND IMPROVEMENT UNDER SCREED: ≤ 30 dB 1 layer, ≤ 32 dB 2 layers



Overview



26-32 dB

Material	High-grade granules and fibres of recycled rubber with PU elastomer bonding agent
Area weight	500 - 600 kg/m³
Thickness	17/8 mm (± 1.0 mm)
Roll width / Roll length	1,250 mm (± 1.5 %), 8 m (± 1.5 %)
Edge strip	DAMTEC® estra 8 x 250 x 8,000 mm
Lower side	wave profile
Maximum pressure	0.10 N/mm² (DIN EN 826)
Dynamic stiffness	ca. 15 MN/m³ (EN 29052)
Temperature resistance	-40° to + 80° C
Fire Resistance	E _{li} (ISO 11925/EN 13501)
Impact sound improvement ΔL_w	26 dB single layer (under 55 mm screed, 106 kg/m²) (ETA -16/0481) 30 dB single layer (under 80 mm screed, 179 kg/m²) 32 dB dual layer (under 60 mm screed, 72 kg/m²)

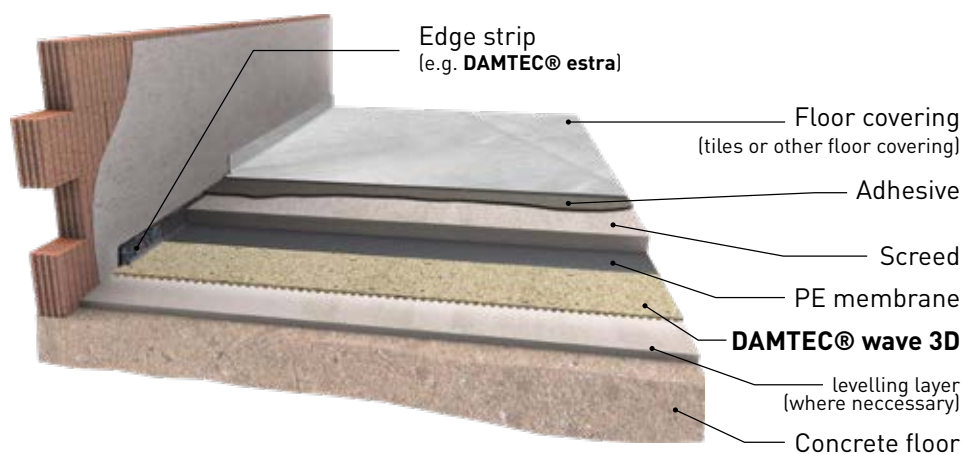


ETA - 16/0481

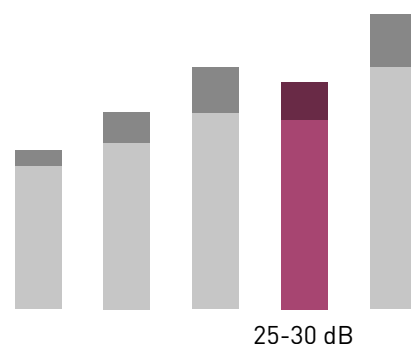


DAMTEC® wave 3D 8/4

IMPACT SOUND IMPROVEMENT UNDER SCREED: ≤ 30 dB



Overview



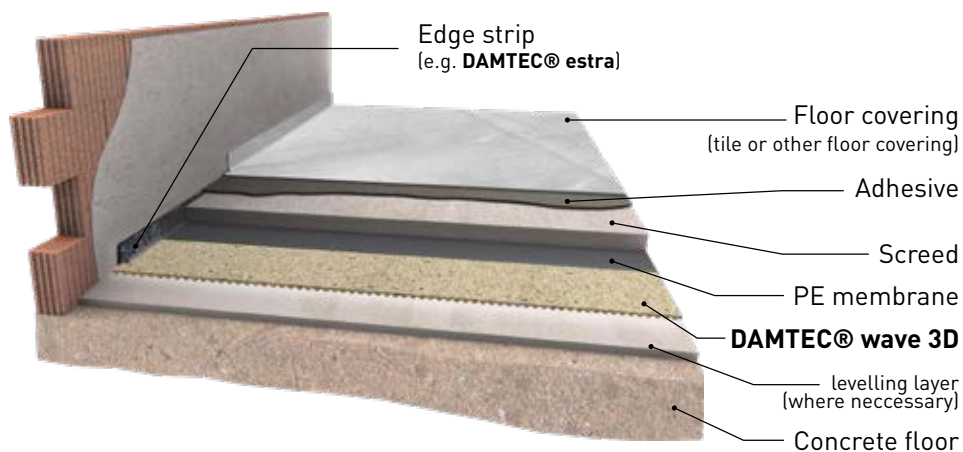
Material	Compound of high-grade recycled polyurethane foam and cork with PU elastomer bonding agent.
Area weight	300 - 400 kg/m ³
Thickness	8/4 mm
Roll width / Roll length	1,250 mm (± 1.5 %), 8 m (± 1.5 %)
Edge strip	DAMTEC® estra 8 x 250 x 8,000 mm
Lower side	wave profile
Maximum pressure	0.03 N/mm ²
Dynamic stiffness	18 MN/m ³ (EN 29052)
Temperature resistance	-30° to + 80° C
Fire resistance	E _{fl} (ISO 11925/EN 13501)
Impact sound improvement ΔL_w	25 dB (under 50 mm screed, 99 kg/m ²) (ETA -15/0358) 30 dB (under 80 mm screed, 179 kg/m ²)



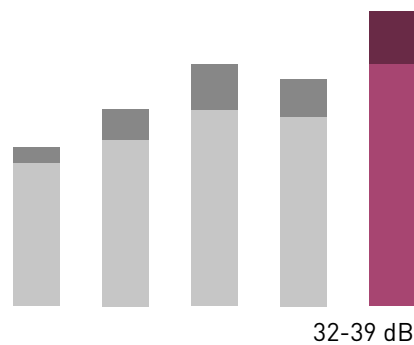


DAMTEC® wave 3D 17/8

IMPACT SOUND IMPROVEMENT UNDER SCREED: ≤ 35 dB 1 layer, ≤ 39 dB 2 layers



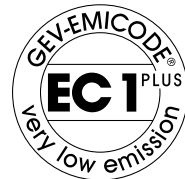
Overview



Material	Compound of high-grade recycled polyurethane foam and cork with PU elastomer bonding agent.
Area weight	300 - 400 kg/m ³
Thickness	17/8 mm
Roll width / Roll length	1,250 mm ($\pm 1.5\%$), 8 m ($\pm 1.5\%$)
Edge strip	DAMTEC® estra 8 x 250 x 8,000 mm
Lower side	wave profile
Maximum pressure	0.03 N/mm ² (EN 826)
Dynamic stiffness	7 MN/m ³ (EN 29052)
Temperature resistance	-30° to +80° C
Fire resistance	E _{li} (ISO 11925/EN 13501)
Impact sound improvement ΔL_w	32 dB single layer (under 50 mm screed, 102 kg/m ²) (ETA - 15/0358) 35 dB single layer (under 80 mm screed, 179 kg/m ²) 39 dB dual layer (under 80 mm screed, 179 kg/m ²)



CE
ETA - 15/0358





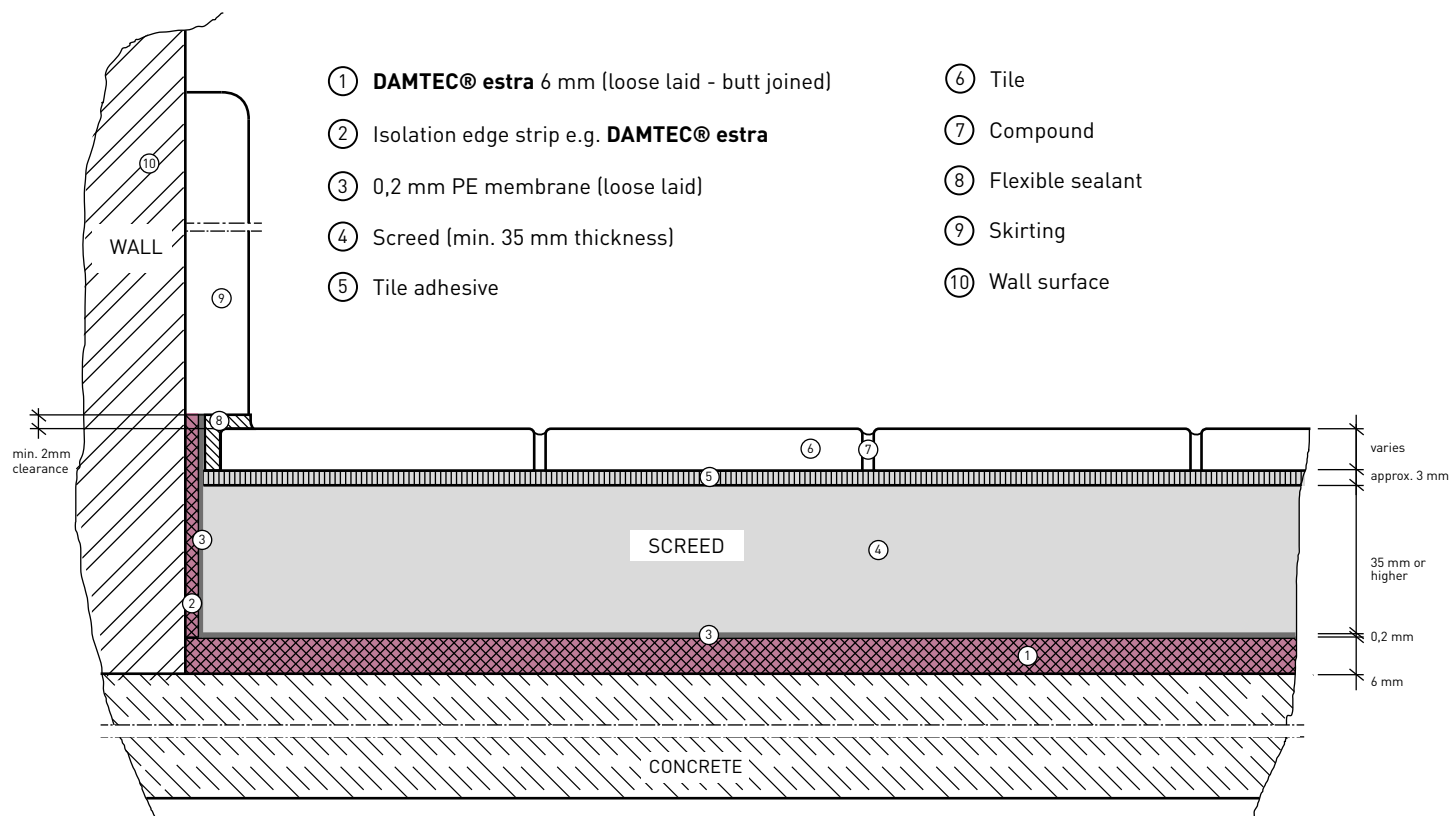
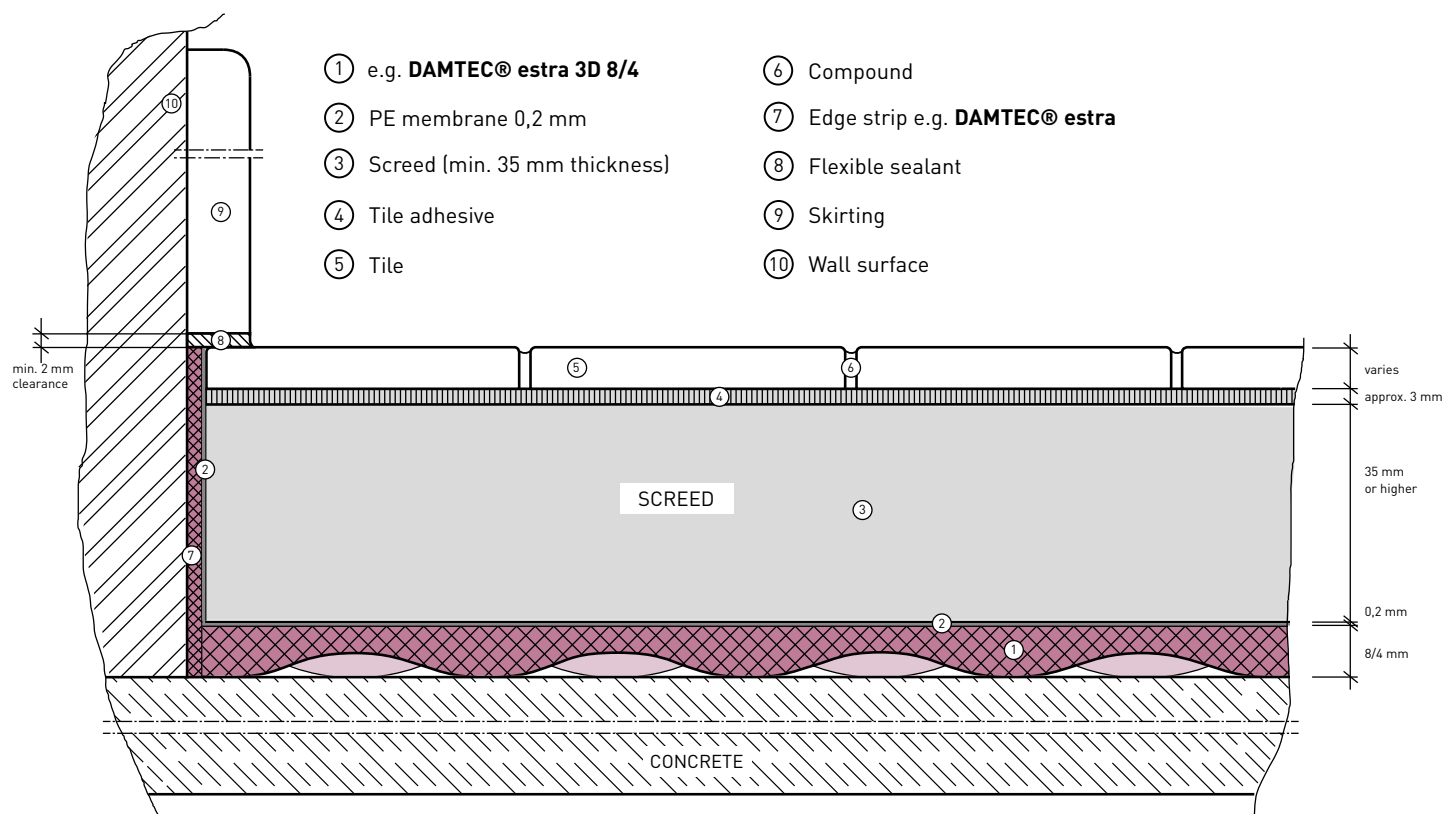
DAMTEC® project
Hilton Hotel Istanbul, Turkey



DAMTEC® project
Aloft Hotel, Abu Dhabi



DAMTEC® project
Lufthansa training center, Seeheim, Germany



- 1 Installation of the edge strips DAMTEC® estra 8 x 250 x 8000 mm



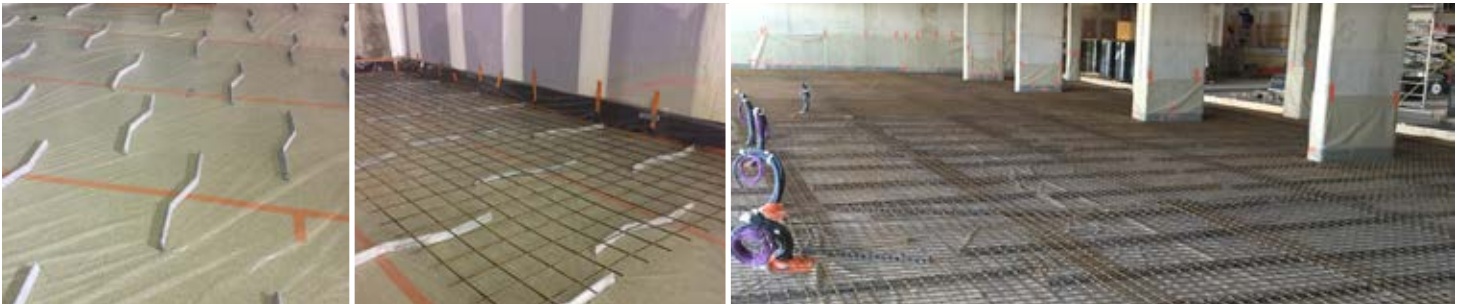
- 2 Rolling out DAMTEC® 3D 17/8 or DAMTEC® wave 3D



- 3 Cut the underlay to the exact size, butt the strips. The joints can be covered with adhesive tape to avoid sound bridges.



- 4 Cover underlay with PE membrane which should also cover the peripheral insulation strip and extend above the subsequent floor surface. Be certain that screed cannot enter into the insulating underlay.



- 5 Install the screed or light weight cement.



The illustrations above show the main sequences in the general installation of our DAMTEC® acoustic insulation products under screed. **Important:** We refer to the respective installation instruction for the different DAMTEC® products. The complete and detailed installation instructions can be found at www.kraiburg-relastec.com/damtec

DAMTEC® project
DC Tower, Vienna, Austria



DAMTEC® project
University, Leipzig, Germany



DAMTEC® project
Savoy Hotel, Seychelles





DAMTEC® project
Hilton Hotel, Melbourne, Australia

DAMTEC® Acoustics and Vibration Isolation

FURTHER INFORMATION

Under the brand name DAMTEC® our customers find a wide range of products for acoustic and vibration insulation for different requirements and application areas.

For more information on our products please contact us or visit our website www.kraiburg-relastec.com/damtec



Brochure

DAMTEC® Acoustic
Insulation



Brochure

DAMTEC® Vibra Series
Vibration isolation in the
building industry



Brochure

DAMTEC® Solutions for
sound and vibration
isolation in rail traffic



Brochure

PURASYS vibrafoam /
vibradyn
Technical information
about the product and
about vibration isolation



SUSTAINABILITY

Corporate Carbon Footprint, Product Carbon Footprint, Energy Management, Social and economic sustainability at KRAIBURG Relastec



Recycling of up to 60,000 t material

Every year, we process and recycle up to 60,000 tons of old tyres, closed-cell rubber foams and rubber production scrap.



Reduction of CO₂ emissions

By using recycled rubber granulate, we save more than 130,000 tonnes of CO₂ emissions per year compared to virgin rubber.



Corporate Carbon Footprint

The CCF was developed in accordance with the Greenhouse Gas Protocol audit.



Coming soon: Product Carbon Footprint

The PCF is measured in accordance with ISO 14067 and ISO 14040/44.



Energy management according to ISO 50001

Our energy management system is in accordance with ISO 50001 standards. Energy-relevant topics are taken into account in all processes of the organisation.



Bronze Rating

The ecovadis rating covers numerous management systems, including environmental impact and sustainable procurement. More information: www.ecovadis.com



Member of NEW LIFE initiative

The declared aim of NEW LIFE is to demonstrate the advantages of recycled products from End-of-Life Tyres (ELT) to the media, politicians and the general public and to motivate them to act sustainably.

More information:
www.initiative-new-life.de/en



Social sustainability

Acting in accordance with our values such as equal opportunities, social responsibility, respectful treatment and transparency, is our foundation for practicing social sustainability.



Economic sustainability

As a family business, KRAIBURG Holding pursues a long-term strategy. Profits generated are used to a significant extent to make our holistic business model ever more efficient and future-proof.



CORPORATE CULTURE

Defined values, social norms and guidelines, for common action and cooperation inside and outside KRAIBURG Relastec.



Equal opportunities

We stand for equal opportunity, diversity, inclusion and religious diversity.



Social responsibility

Fair pay, collective bargaining, further training, career development, work-life integration.



Respect

We are honest, reliable, respectful and trustworthy towards our colleagues and partners.



Strong decision-making powers

We ensure speed in process handling, faster technology optimisations and lean processes.



Responsible for our actions

We take responsibility for all decisions and results. Error acceptance and the strong will to correct and learn from them are firmly anchored in our culture.



Transparency

We practice open, transparent cooperation both inside and outside the company.



WHAT SETS US APART



Internationality

With an export quota of over 50%, we have already exported our products to over 100 countries.



Easy complaint management

Transparent and optimised processes ensure rapid processing.



Flexibility with customer requirements

We offer our partners customised options for packaging, labelling and delivery, packaging, labelling and delivery.



Long-term relationships

We maintain long-term relationships with our customers and suppliers based on mutual respect and fairness.



Marketing support

We provide you with the best possible support in the form of images or in the design of your documents.



Personal contact persons

We do not hide behind support hotlines and contact forms. With us, you have personal, competent contact persons.



Product quality

Our products meet the highest quality standards. They are durable, a perfect fit and made from high-quality raw materials.



Innovation and product design

We continuously develop new products according to the requirements of our customers and the market.



Acoustics and Vibration Isolation

made from rubber granules and polyurethane

KRAIBURG Relastec GmbH & Co.KG
Fuchsberger Straße 4 · D-29410 Salzwedel

Sales:

Tel. +49 (0) 8683 701 -124

Fax +49 (0) 8683 701 -4124

damtec@kraiburg-relastec.com

www.kraiburg-relastec.com/damtec

All rights reserved, all indications without engagement, subject to modifications.
© KRAIBURG Relastec GmbH & Co. KG 2023

