

The indoor & outdoor solution with a seamless, closed surface
for maximum freedom of design



EUROFLEX®



approved fall
height up to 3.0 m

EUROFLEX® Visual System

Printed surface with impact protection slabs (page 4-17)



seamless surface covering with
individual motif (rolls)

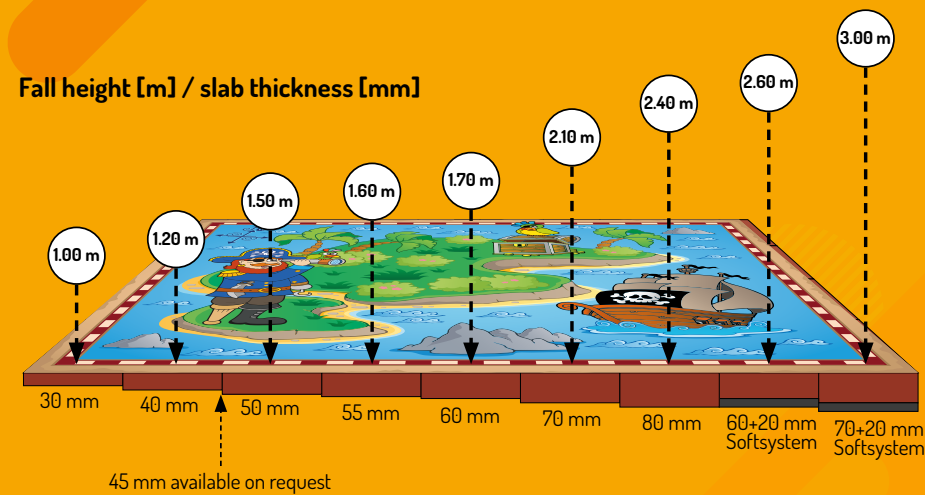
adhesive

EUROFLEX® slab, **without cham-
fer** (30-80 mm thickness or Soft-
system) **for a seamless surface**

concrete base

Visual System – with approved fall height for play areas

EUROFLEX® impact protection slabs have been proving their worth for many years thanks to their high impact protection values for children's playgrounds. Although our EPDM impact protection slabs and their various designs already offer numerous design possibilities, there are still limits. With our new EUROFLEX® Visual System you can now print individual designs with pixel precision – in virtually any shape and size! From motifs such as stones, lawns, wooden floors, sea and jungle to your own logos, corporate design colours or lines, everything is possible!



Airports



Shopping
malls



Fairs



Climbing
halls



Children's
playgrounds



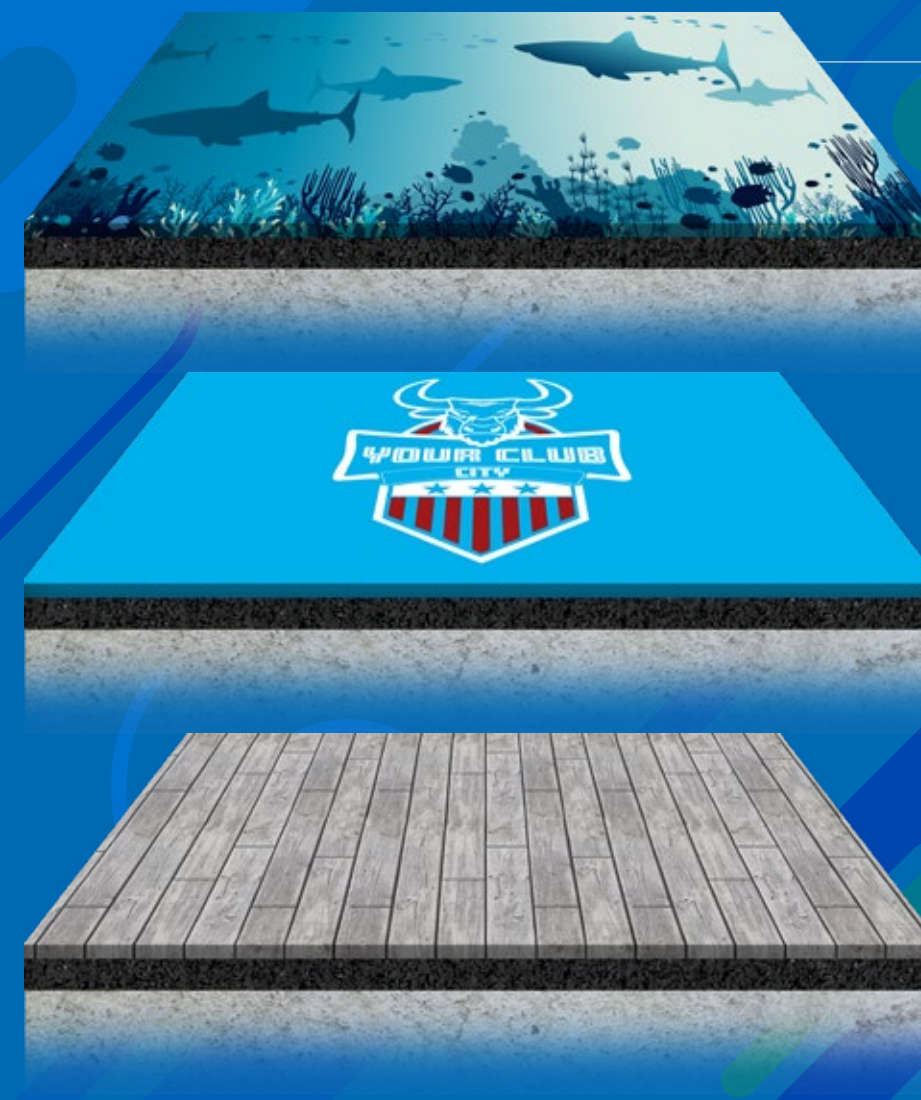
Kindergartens &
schools



Impact sound im-
provement: 20 dB

EUROFLEX® Visual System comfort

Printed surface with elastic layer (page 18-25)



seamless surface covering with
individual motif (rolls)

adhesive

elastic layer (4 mm)
(rolls)

adhesive

concrete base

Visual System comfort – sound reduction & walking comfort

EUROFLEX® Visual System comfort is used wherever there is no statutory impact protection requirement. EUROFLEX® Visual System comfort allows you to design and print your surface to pixel accuracy – in virtually any shape and size – just like the version with impact protection tiles.



Airports



Shopping
malls



Fairs



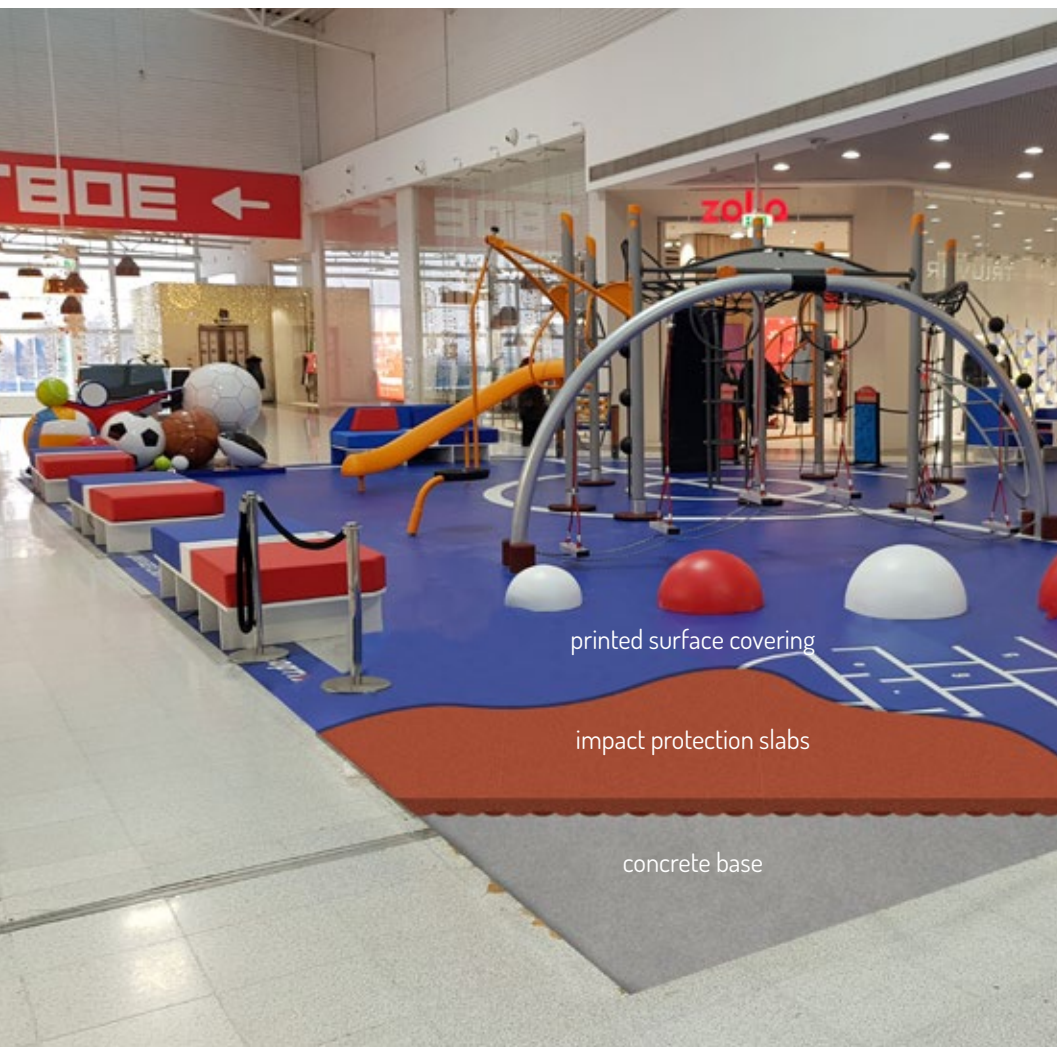
Restaurants



Hotels



Offices



printed surface covering

impact protection slabs

concrete base

Printed surface covering with impact protection slabs



Visual System – with approved fall height for play areas

EUROFLEX® impact protection slabs have been proving their worth for many years thanks to their high impact protection values for children's playgrounds. Although our EPDM impact protection slabs and their various designs already offer numerous design possibilities, there are still limits. With our new EUROFLEX® Visual System you can now print individual designs with pixel precision – in virtually any shape and size! From motifs such as stones, lawns, wooden floors, sea and jungle to your own logos, corporate design colours or lines, everything is possible!

FAQs regarding Visual System



What does „closed surface“ mean?

The vinyl flooring is glued to the panel surface as rolled goods. This means that the tiles are not visible and the end result is a uniform and closed surface. The dimensions of the vinyl floor are perfectly adapted to the dimensions of the project, so that a minimum of joints is made possible.

Which impact protection slabs are suitable as substrate for the Visual System?

All SBR impact protection slabs of 30-80 mm or Softsystem can be used depending on the required fall height. The only difference is that the edges of the impact protection slabs are not chamfered when used under printed surface coverings. This makes it easier to create a completely smooth, jointless surface. The colour of the slabs does not matter as the surface is 100% opaque.

What material is the printed surface covering made of?

The surface covering is a 2.0 mm (outdoor) or 2.9 mm (indoor) thick vinyl floor. It is antistatic. It is standardly divided into 2.0/3.0 m wide strips (max. 4 m possible).

The surface is sealed ex factory which enables easy cleaning.

The product Visual System consisting of impact protection slabs and vinyl surface covering is offered and supplied as a complete system by KRAIBURG Relastec.

Which motifs can be printed?

In principle, any motif can be printed on the surface covering. However, a high resolution of the motif is decisive. Mobile phone shots or shots with cameras are usually not sufficient.

Especially for larger areas, professionally created textures or vector graphics are recommended, which can be scaled to any size without loss of quality.



What do I do if I cannot provide vector graphics for printing?

The following link will take you to an image database that provides an almost unlimited selection of images:

www.shutterstock.com

Filter by theme and select the images of your choice. We will be happy to assist you with your initial design free of charge.

After this initial design, our highly qualified design team will use your selection to create a top floor (at an extra charge) that will be fully customised and sure to catch the eye.

What is the slip resistance of the surface?

The floor has achieved an excellent slip resistance value of R10 (tested according to DIN EN 16165).

Which fire protection class is achieved?

The system has achieved the best fire classification (B_{f1}-s1) for impact protection systems.

Where can the Visual System be used?

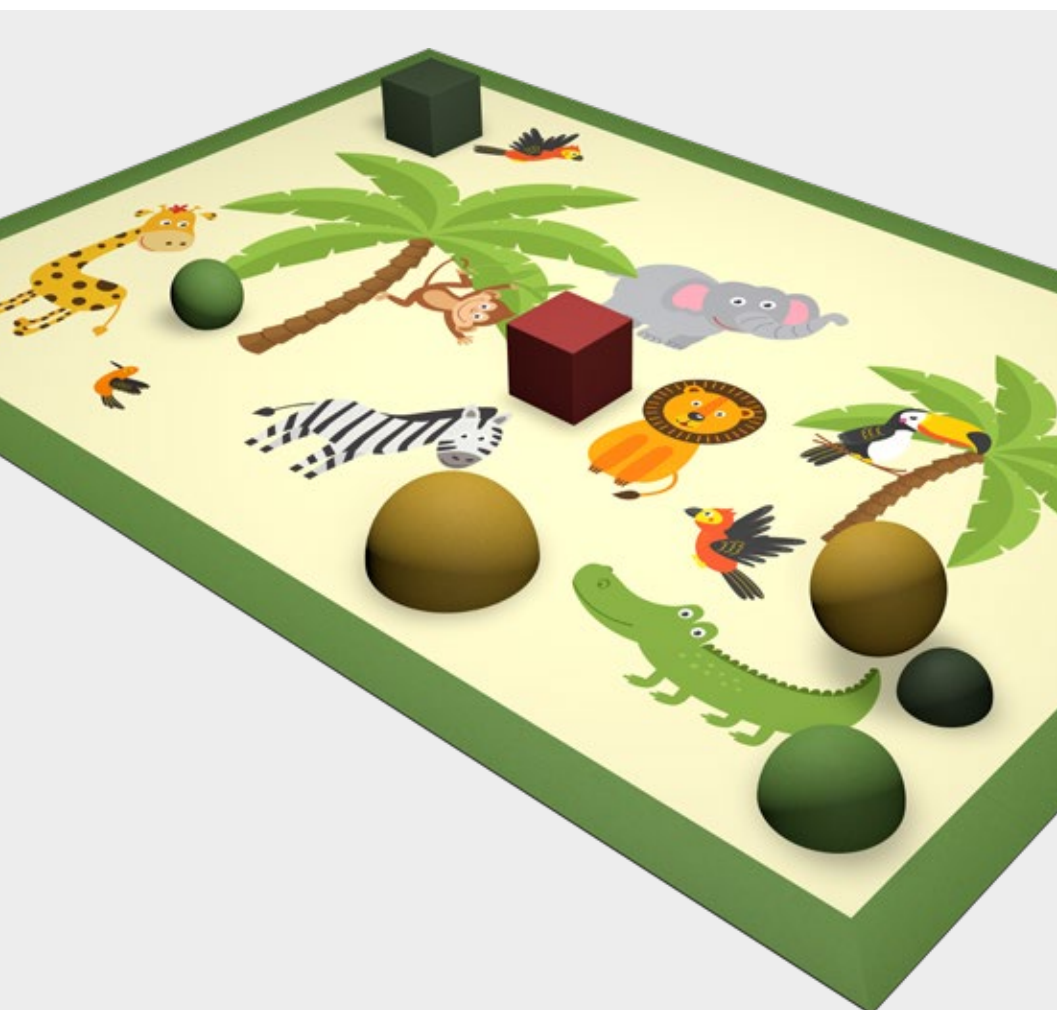
Indoor and outdoor use is possible.

Can Visual System be used multiple times?

Indoors, the floor can be fixed with double-sided adhesive tape and then reused. Outdoors, it must be glued and therefore cannot be reused.

You can find a detailed installation instruction here:

www.kraiburg-relastec.com/euroflex/en/downloads



Impact protection slabs - the ideal base for Visual System



Tested quality - that is our promise!

EUROFLEX® Impact Protection Slabs guarantee the highest safety standard on playgrounds - for the past 40 years. Impact protection slabs (without chamfer on the edges) provide the base for the Visual System.

The use of shock-absorbent floor systems is necessitated by the requirements of DIN EN 1177:2018. This standard requires shock-absorbent flooring for a fall height of 60 cm or more. The suitability of Impact Protection Slabs made of bonded, permanently elastic recycled rubber granules is documented by a test certificate. The impact attenuation is demonstrated by means of the HIC method. All EUROFLEX® Impact Protection Slabs are tested in accordance with DIN EN 1177:2018 to determine the HIC value.



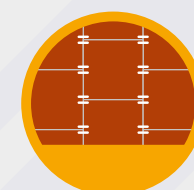
Tested Quality

ISO 9001 certified, Compliance with impact protection standards EN 1177:2018



Easy cleaning

due to a seamless surface



Integrated connector pins

for higher dimensional stability and prevention of accidental displacement



High elasticity & walking comfort

for cushioning shocks and falls



Great freedom for design

made possible by pixel-accurate, individual printing on the surface
edge- and corner profiles can be used, too



Impact sound insulation

for a calm room ambience



High anti-slip properties

R10 due to surface covering



Wide range of peripheral accessories

balls, half balls, diamond, cube, stepper, mushrooms, animals



Impact protection slab standard (without chamfered edges)

length / width	500 x 500 mm
other	pre-installed connector pins included



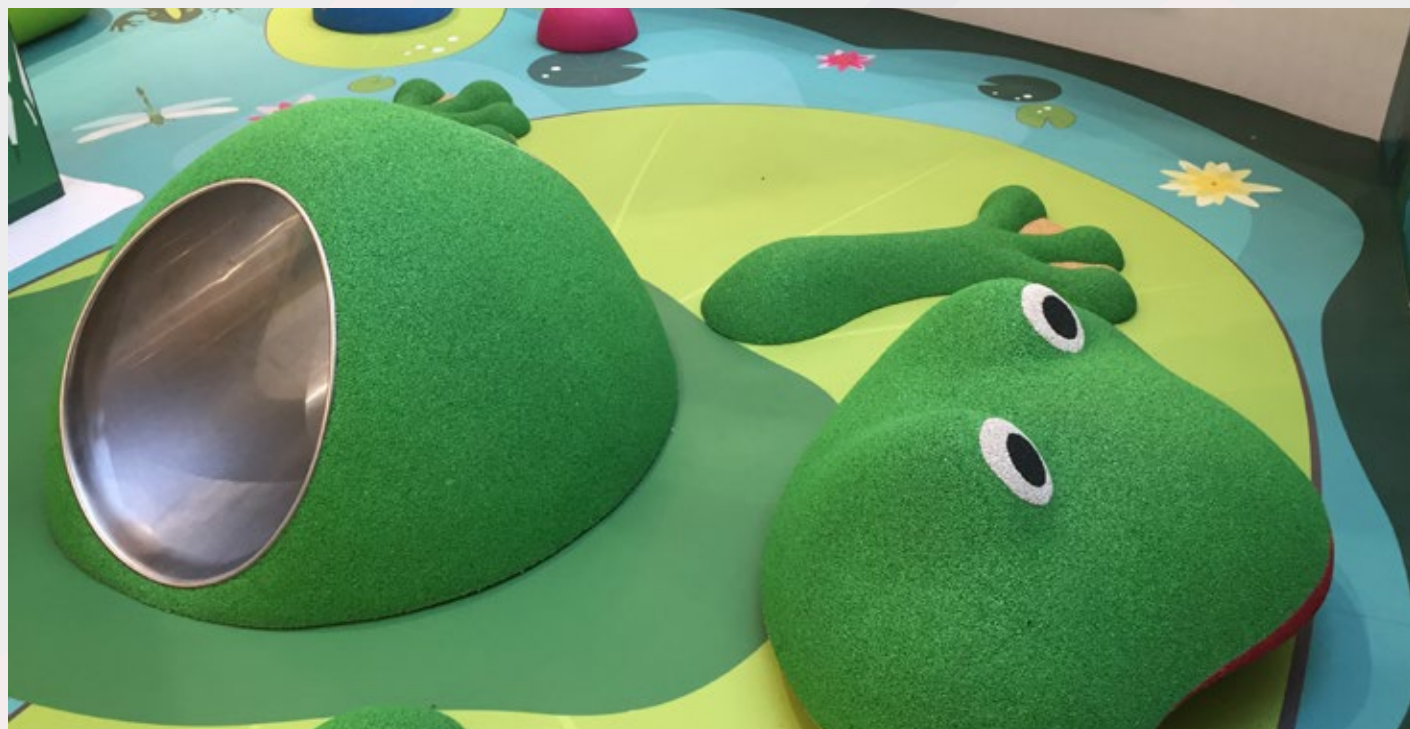
edge and corner profiles (also available with EPDM coating)

length / width	edge and corner profiles: 1,000 x 250 mm
heights	30/10, 40/10, 50/20, 70/20, 80/20, 90/20
colours	red



Accessibility

Thanks to our edge and corner profiles, all impact protection slabs can be installed barrier-free.



Woluwe Shopping Center, Brussels, Belgium (concept and realisation by Pro Urba)



Centre Manor Chavannes, Geneva, Switzerland (concept and realisation by Pro Urba)



Woluwe Shopping Center, Brussels, Belgium (concept and realisation by Pro Urba)



Centre Manor Chavannes, Geneva, Switzerland (concept and realisation by Pro Urba)



Hotel Grünauerhof, Salzburg, Austria



StadtPalais Stuttgart, Germany



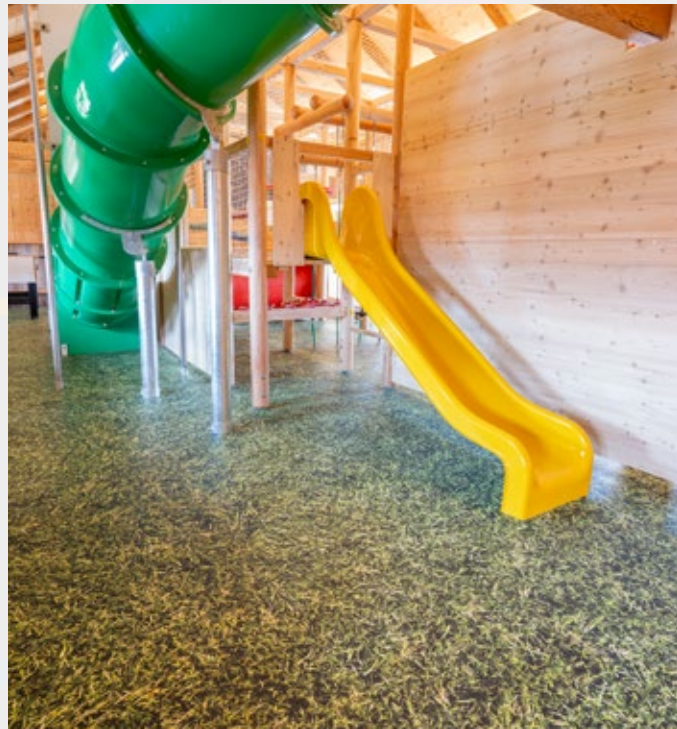
Hotel Grünauerhof, Salzburg, Austria



StadtPalais Stuttgart, Germany



Staller Ferienhof, Seeon-Seebruck, Germany



Shopping Centre



Staller Ferienhof, Seeon-Seebruck, Germany



Kansas City Airport, USA

Outdoor Reference Projects



Lessingschule Salzwedel, Germany

Outdoor Reference Projects



Children's Centre Bielefeld, Germany
Design: Courtesy of Samuelis Baumgarte Art Consulting für das Kinderzentrum Bethel / Photographer: Thomas Starke

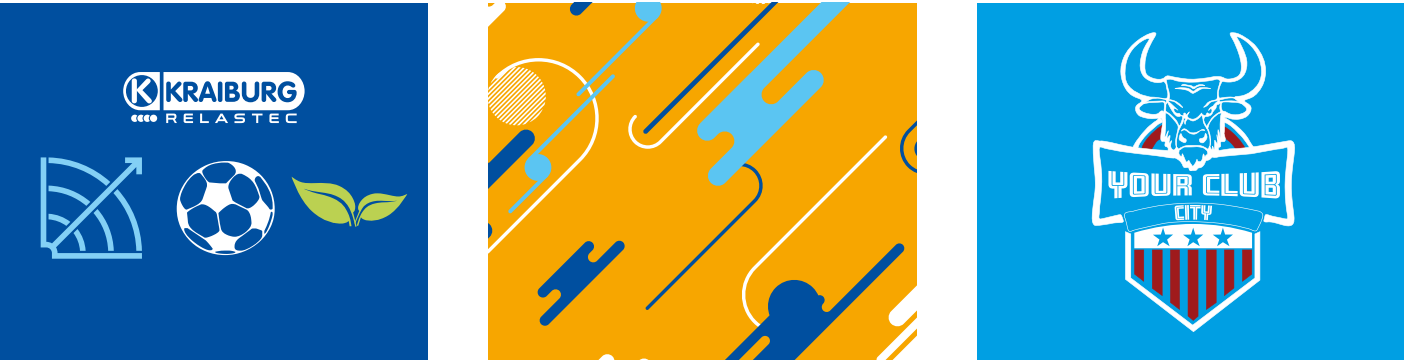


Fairytale Park Salzwedel, Germany



Children's Centre Bielefeld, Germany
Design: Courtesy of Samuelis Baumgarte Art Consulting für das Kinderzentrum Bethel / Photographer: Thomas Starke

Completely individual design with lines, logos, any shapes and colours



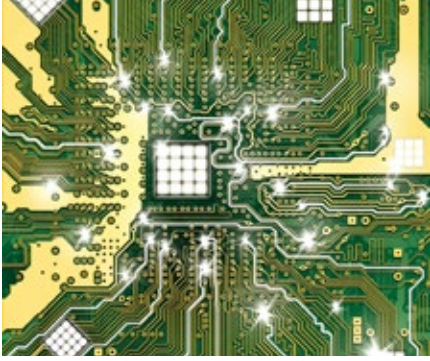
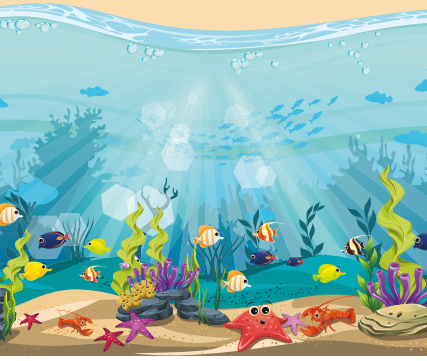
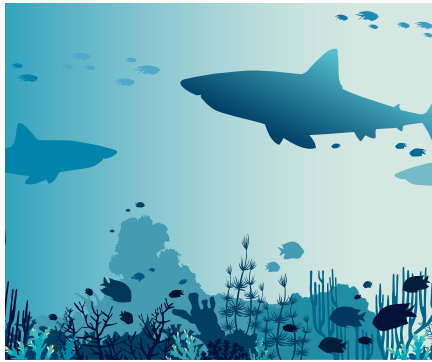
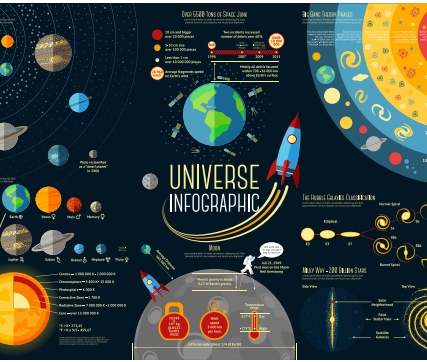
Motif collections (individual elements can be used as required)

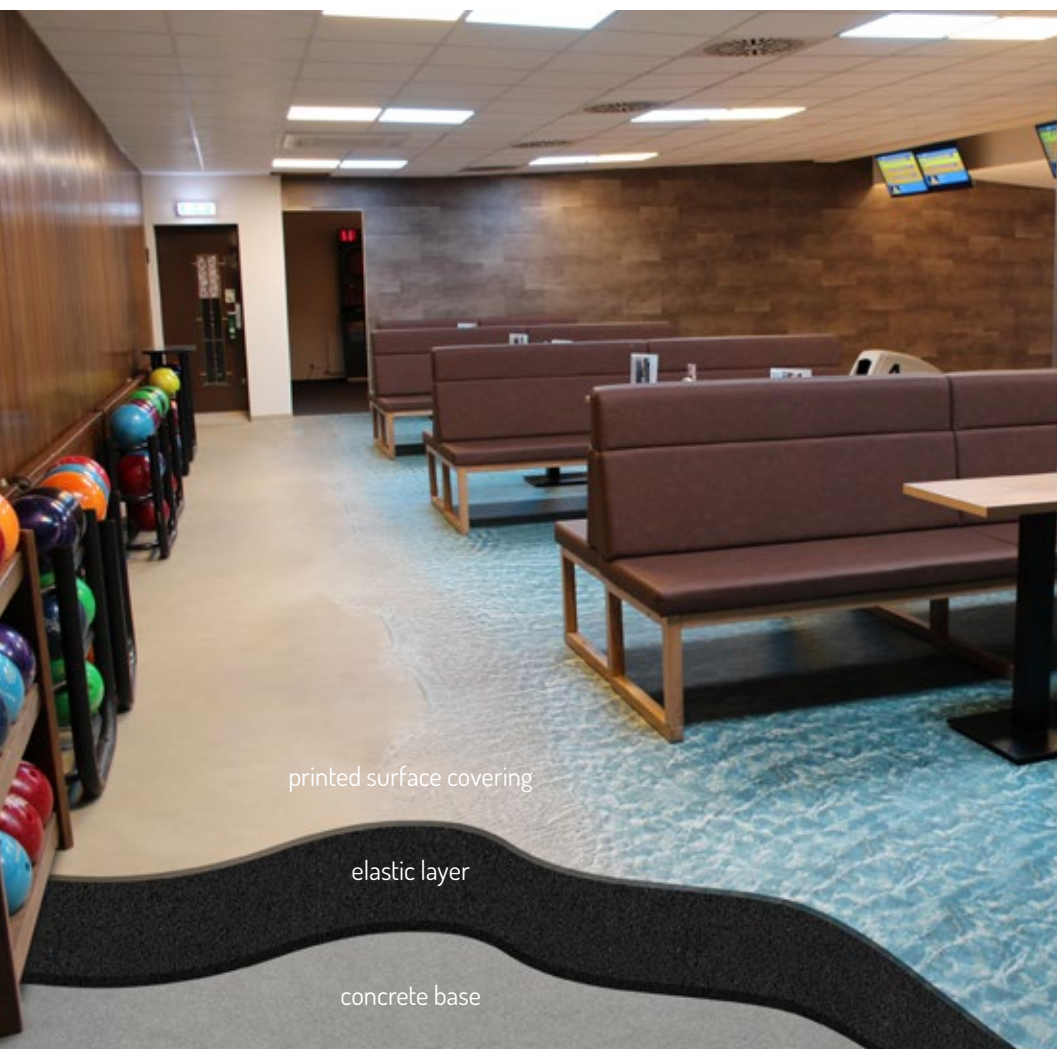


Textures



Stockfotos / own photos





Printed surface with elastic layer



Visual System comfort – sound reduction & walking comfort

EUROFLEX® Visual System comfort is used wherever there is no statutory impact protection requirement. EUROFLEX® Visual System comfort allows you to design and print your surface to pixel accuracy – in virtually any shape and size – just like the version with impact protection tiles.

Visual System comfort structure



FAQs Visual System comfort

What material is the elastic layer made of?

The elastic layer is 4mm thick and consists of high-quality recycled rubber granulate. Due to the excellent material properties of this material, a **impact sound improvement of 20 dB** according to ISO 10140 is achieved for the entire system. In addition, the elastic layer ensures pleasant walking comfort. The elastic layer is delivered with the separate printed surface and has to be bonded together on site.

What material is the printed surface covering made of?

The surface covering is a 2.9 mm thick vinyl floor. It is anti-static. It is standardly divided into 2.0/3.0 m wide strips (max. 4 m possible).

The surface is sealed ex factory which enables easy cleaning.

The product Visual System comfort consisting of an elastic layer and vinyl surface covering is offered and supplied as a complete system by KRAIBURG Relastec.

Which motifs can be printed?

In principle, any motif can be printed on the vinyl surface layer. However, a high resolution of the motif is required. Mobile phone shots or shots with cameras are usually not sufficient. Especially for larger areas, professionally created textures or vector graphics are recommended, which can be scaled to any size without loss of quality. We have numerous motif suggestions available. You can also select motifs from an image database. We will be happy to send you detailed print data requirements upon request.

What do I do if I cannot provide vector graphics for printing?

The following link will take you to an image database that provides an almost unlimited selection of images:

www.shutterstock.com

Filter by theme and select the images of your choice. We will be happy to assist you with your initial design free of charge.

After this initial design, our highly qualified design team will use your selection to create a top floor (at an extra charge) that will be fully customised and sure to catch the eye.

What is the slip resistance of the surface?

The floor has achieved an excellent slip resistance value of R10 (tested according to DIN EN 16165).

Which fire protection class is achieved?

The system has achieved the best fire classification (C_{fl-s1}) for acoustic insulation systems.

Is it possible to install the system in an outdoor area?

Usage in outdoor areas is not possible.

Can Visual System comfort be used multiple times?

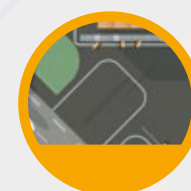
Yes! The floor can be used as a temporary flooring solution – for instance on fairs – by fixating it with double-sided tape. In this way, the floor can be reused later in another place.

You can find a detailed installation instruction here:

www.kraiburg-relastec.com/euroflex/en/downloads



Advantages of Visual System comfort



Great freedom for design
made possible by pixel-accurate, individual
printing on the surface



Easy cleaning
due to a seamless surface



High elasticity & walking comfort
for cushioning shocks and falls



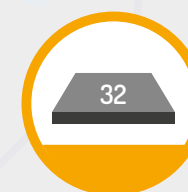
High walking comfort
due to elastic layer



Impact sound improvement
-20 dB for a calm room ambience



High anti-slip properties
R10 due to surface covering



Service class 32
for commercial buildings with
medium stress



Low net weight
only 1.95 kg/m²

Extensively tested system

EUROFLEX® Visual System comfort is the ideal system for shop areas, exhibition stands or other areas where creative flooring is required. The high fire protection class, high slip resistance and excellent impact sound improvement of 20 dB are ideal properties for commercial areas.









SUSTAINABILITY

Corporate Carbon Footprint, Product Carbon Footprint, Energy Management, Social and economic sustainability at KRAIBURG Relastec



Recycling of up to 60,000 t material

Every year, we process and recycle up to 60,000 tons of old tyres, closed-cell rubber and rubber production scrap.



Reduction of CO₂ emissions

By using recycled rubber granulate, we save more than 130,000 tonnes of CO₂ emissions per year compared to virgin rubber.



Corporate Carbon Footprint

The CCF was developed in accordance with the Greenhouse Gas Protocol audited.



Coming soon: Product Carbon Footprint

The PCF is measured in accordance with ISO 14067 and ISO 14040/44 audited.



Energy management according to ISO 50001

Our energy management system is identified according to ISO 50001. Energy-relevant topics are taken into account in all processes of the organisation.

ecovadis

Coming soon: Certification by ecovadis

The ecovadis rating covers numerous management systems, including environmental impact and sustainable procurement.



Member of NEW LIFE initiative

The declared aim of NEW LIFE is to demonstrate the advantages of recycled products from End-of-Life Tyres (ELT) to the media, politicians and the general public and to motivate them to act sustainably. More information: www.initiative-new-life.de/en



Social sustainability

Acting in accordance with our values such as equal opportunities, social responsibility, respectful treatment and transparency are the foundations for social sustainability in practice.



Economic sustainability

As a family business, KRAIBURG Holding pursues a long-term strategy. Profits generated are used to a significant extent to make our holistic business model ever more efficient and future-proof.



CORPORATE CULTURE

Defined values, social norms and guidelines, for common action and cooperation inside and outside KRAIBURG Relastec.



Equal opportunities

We stand for equal opportunity, diversity, inclusion and religious diversity.



Strong decision-making powers

We ensure speed in process handling, faster technology optimisations and lean processes.



Social responsibility

Fair pay, collective bargaining, further training, career development, work-life integration.



Responsible for our actions

We take responsibility for all decisions and results. Error acceptance is firmly anchored in our culture.



Respect

We are honest, reliable, respectful and trustworthy towards our colleagues and partners.



Transparency

We practice open, transparent cooperation both inside and outside the company.



WHAT SETS US APART



Internationality

With an export quota of over 50%, we have already exported our products to over 100 countries.



Easy complaint management

Transparent and optimised processes ensure rapid processing.



Flexibility with customer requirements

We offer our partners customised options for packaging, labelling and delivery, packaging, labelling and delivery.



Long-term relationships

We maintain long-term relationships with our customers and suppliers based on mutual respect and fairness.



Marketing support

We provide you with the best possible support in the form of images or in the design of your documents.



Personal contact persons

We do not hide behind support hotlines and contact forms. With us, you have personal, competent contact persons.



Product quality

Our products meet the highest quality standards. They are durable, a perfect fit and made from high-quality raw materials.



Innovation and product design

We continuously develop new products according to the requirements of our customers and the market.



IMPACT PROTECTION & PLAYGROUND ACCESSORIES FOR PLAYGROUNDS AND MULTIPURPOSE SPORTS FACILITIES

made from rubber granules

KRAIBURG Relastec GmbH & Co.KG
Fuchsberger Straße 4 · D-29410 Salzwedel

Sales:

Tel. +49 (0) 8683 701 -145 or -199

Fax +49 (0) 8683 701 -4145 or -4199

euroflex@kraiburg-relastec.com

www.kraiburg-relastec.com/euroflex/en

All rights reserved, all indications without engagement, subject to modifications.
© KRAIBURG Relastec GmbH & Co. KG 2023



Verband Deutscher Freizeitparks
und Freizeitunternehmen e.V.

