

1. Applications

EUROFLEX® Impact protection slabs Soft Touch combine slip-resistant with pleasantly soft properties and are suitable as shock-absorbing fall protection surfacing according to DIN EN 1177:2018 under outdoor and indoor playground equipment and under outdoor playground equipment in accordance with DIN EN 16630:2015-06 for fall heights 1,0 m up to 3,0 m or as elastic surfacing slabs on school recess areas.

In addition, they are also used in other areas such as nursing homes and rehabilitation centers or in break yards.

Due to the anti-slip and yet soft surface, they are particularly suitable for heavily used surfaces.

Easy and inexpensive to install – with excellent dimensional stability due to integrated connector pins and interlocking masonry-style installation.

They can be played on under almost any weather conditions.

2. Material

Rubber granulate: Substructure: Rubber recycled granulate
Top layer: Polyamide flocked fabric

Binder MDI Polyurethane

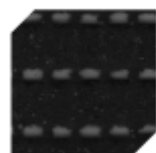
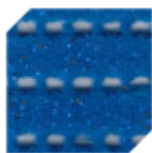
Soft system

Substructure: Plastic

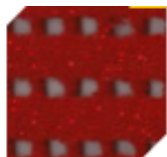
3. Product design

Colour: Substructure: black

Upper material: blue, black, red



order quantity from 10m²



order quantity from 100m²

other colours for example on request order quantity from 1500m²

Surface: smooth with open pores
Lower side: dimple-textured (for drainage)
Other data: plastic connector pins included
Colour base frame: Geomembrane white, plastics material black

4. Dimension / Tolerances

Dimensions mm	Weight kg/Stk.	Max. critical fall height m
500 x 500 x 30	5,7	1,00
500 x 500 x 40	6,9	1,20
500 x 500 x 50	8,2	1,50
500 x 500 x 55	8,6	1,60
500 x 500 x 70	10,7	2,00
500 x 500 x 80	12,6	2,30
Softsystem 90 500 x 500 x 70 + base frame 30.000 x 1.000 x 20 (LxBxH)	10,7	2,80
Softsystem 100 500 x 500 x 80 + base frame 30.000 x 1.000 x 20 (LxBxH)	12,6	3,00

Dimensional tolerances: length, width: +/- 0,8 %, thickness: +/- 2 mm
To be installed with edge slabs, corner slabs, inside corner slabs or edge and corner profile

5. Test Data

Permissible fall height: in accordance with EN 1177:2018
HIC 1000 EN 1176-1:2017
Production facility inspection

Slip resistance: R 11 DIN 51130:2014-02
Fire resistance: Cfl s2 DIN EN 13501-1:2018
Water permeation test: mean value \geq 150mm/h

6. Installation

Pour level layer of lean concrete or crushed rock over frost-stable sub grade.
If the surface covered is an existing concrete or asphalt surface, take care to provide sufficient slope for water drain-off and level off any irregularities.
Use edge slabs and corner slabs around the surface to minimize the danger of stumping.
Install the slabs in a masonry-type configuration, i.e. beginning every second row with a half slab. Note the complete Installation instruction.

ATTENTION!

Damage to the surface caused by using the surface with spike shoes or cycling shoes are excluded from the warranty.