

1. Application

With our new EUROFLEX® Visual System Comfort you can now print individual designs with pixel precision – in virtually any shape and size! From motifs such as stones, lawns, wooden floors, sea and jungle to your own logos, corporate design colours or lines, everything is possible!

Thanks to pixel-accurate printing in the complete CMYK colour space, any motif or colour can be printed. The combination of surface covering and impact protection slabs is therefore ideal for indoor playgrounds in shopping malls, as colours and motifs can be adapted to the corporate designs of shopping centres or shops.

Based on the integrated sealer cleaning and maintenance is absolute easy and with the high anti slippery characteristic the risk of fall is minimize.

The high fire classification Cfl s1 are in accordance with the regulations for indoor using and minimize the risk in case of fire.

The sound absorbing characteristic reduced ambient noise in rooms.

The top layer based on a special developed vinyl and is 100% recycle bar.

2. Material

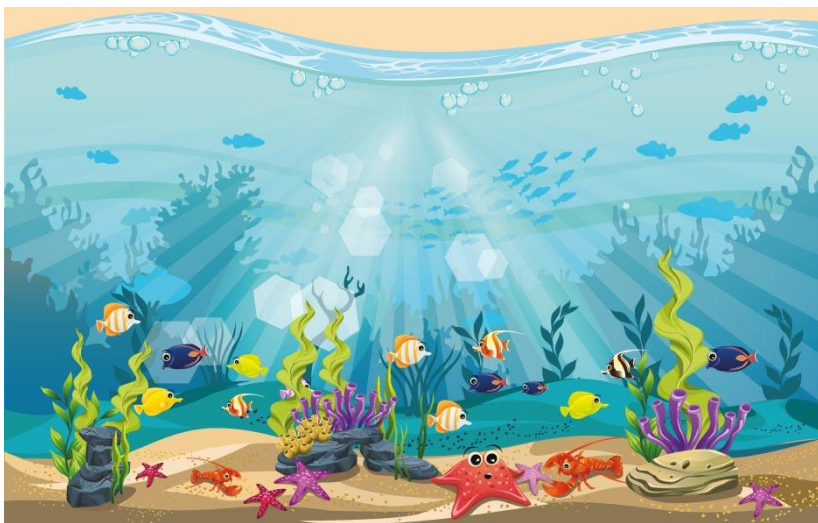
Impact sound reduction layer recycling rubber granulate MDI polyurethane bonded

3. Product design Impact sound reduction layer

Colour: black

Surface: even with open pores

**Design flooring individual printable and must cut by side in layer with 2m or 3m width.
Attention! Please calculate 5cm circular material more for offcut.**



All information without guarantee, subject to change. The Data Sheet is not subject to any change service.
Each current and valid from can be recalled at www.kraiburg-relastec.com/euroflex

page 1 of 4



It is possible to create the wall and subbase flooring in the same style.

It is a vector graphic as PDF file needful.

We are happy to assist you in creating such a vector graphic, so that the floor becomes a real eye-catcher.

All information without guarantee, subject to change. The Data Sheet is not subject to any change service.
Each current and valid from can be recalled at www.kraiburg-relastec.com/euroflex

4. Dimensions / Tolerances sound reduction layer

Thickness x Width x Length: 4mm x 1.000mm x 10.000mm

Density: approx. 760 - 860 kg/m³

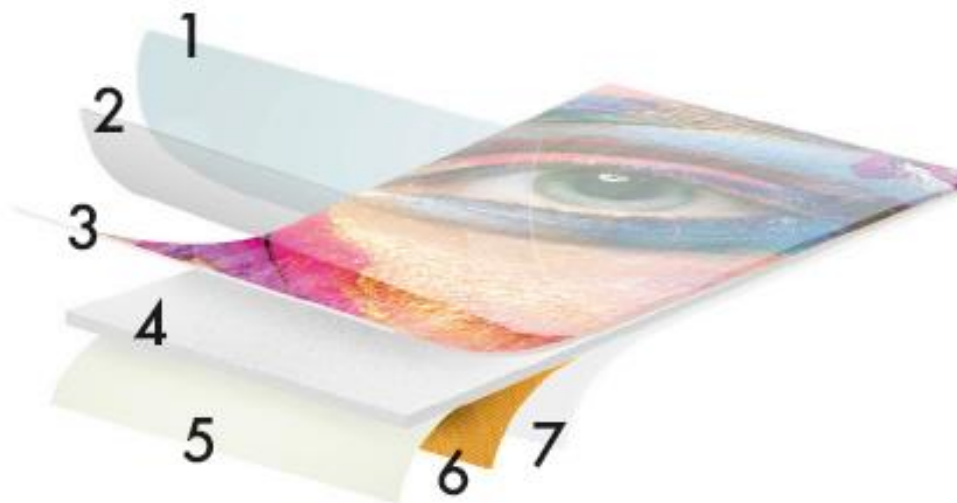
Tolerances: Width, Length: +/- 1,5 %, Thickness: +/- 0,6 mm

Design top layer:

Thickness/Weight layer: 2,9mm, 1,95kg/m² (already sealed)

Width rolls: max. 4m print width

Design surface covering:



1 - PU lacquer
2 - Wear layer
3 - Design layer

4 - Foam layer
5 - Impregnation layer
6 - Glass fibre interlayer
7 - Backing

All information without guarantee, subject to change. The Data Sheet is not subject to any change service.
Each current and valid from can be recalled at www.kraiburg-relastec.com/euroflex

page 3 of 4

5. Tests

Fire resistance:	Class Cfl s1 EN 13501-1:2010
Using classification:	class 32 for the layer 32 EN ISO 10874 (commercial areas with medium using traffic like hotel, office, Boutique)
	class 32 for the layer EN ISO 10874
Anti-slip property:	R 10 DIN EN 51130
(R 10 is the normal static friction until an angle of slope of 10° until 19°).	
Tensile strength:	ca. 2,8 N/mm ² (ISO 1798)
Elongation at break:	ca. 42% (ISO 1798)
force reduction:	16,8% DIN EN 14808 (self-test)
Temperature stable:	-30° bis 80°C
Sound reduction:	20dB (ISO 10140)
Light fastness	EN ISO 105 B02 > 6

corresponds to the classification very good to excellent in the light fastness scale 1-8



- 100% recyclable
- No solvents
- No heavy metals
- 100% phthalate-free
- No harmful plasticizers
- No formaldehyde
- E1 means a formaldehyde emission lower than 0.1ppm (= 0.12mg/m³ air)

The complete installation instructions must be observed.

All information without guarantee, subject to change. The Data Sheet is not subject to any change service.
Each current and valid from can be recalled at www.kraiburg-relastec.com/euroflex

page 4 of 4