

1. Application

EUROFLEX® Head of a caterpillar is a design element to create with half balls a caterpillar that could use as sitting or playing possibility.

EUROFLEX® products are manufactured by an environment-friendly process and can be recycled as process raw material at the end of their service life.

2. Material Head of a caterpillar

Rubber granulate: granulated recycled rubber
 Binding agent: MDI polyurethane
 Topping: Coloured EPDM rubber granulate
 Colour:



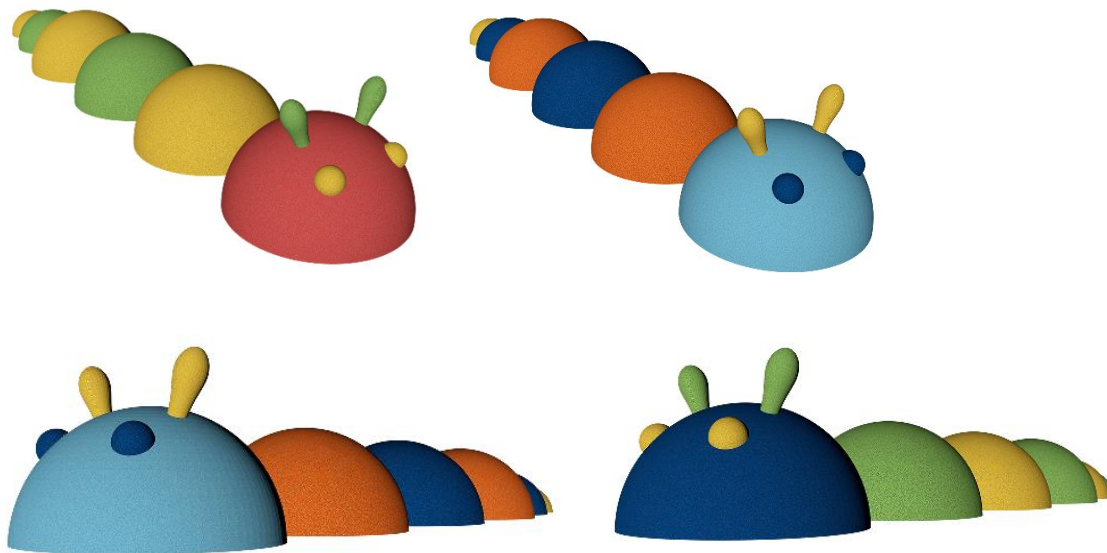
Colour tentacle: RAL 6017, RAL 1012

Colour eyes: RAL 5010, RAL 3017



All information without guarantee, subject to change. The Data Sheet is not subject to any change service.
 Each current and valid from can be recalled at www.kraiburg-relastec.com/euroflex

Example of arrangement



3. Characteristics

Surface: minor colour variation possible
smooth with open pores

4. Dimensions / Tolerances

Diameter: approx. 695 mm
Weight: approx. 84,0 kg
Tolerances: +/- 0,8 %
Dimension steel anchors: Ø 42,8 mm, length approx. 750 mm

6. Test Data

Conformity acc. to Regulation (EC) 1907/2006 SVHC list and appendix XVII
Production facility inspection

7. Installation

Install EUROFLEX® Head of a caterpillar by inserting their steel anchors. Please note the complete installation instruction.

Attention: The tentacles are separate and must be glued by side with polyurethane glue. The integrated steel reinforcement guarantees the stability of the tentacles.

All information without guarantee, subject to change. The Data Sheet is not subject to any change service. Each current and valid from can be recalled at www.kraiburg-relastec.com/euroflex