

## Edge and Corner Profiles

Product Data Sheet no. 9333 - R-03

Issue: March 2023

KOMFORTEX® Edge and Corner Profile are used as edging for indoor stables, outdoor stalls and pens, washing bays and paddocks on drainable surfaces concrete or asphalt. Their beveled edges facilitate access with wheelchairs and reduce the danger of stumbling at the edge of the surface.

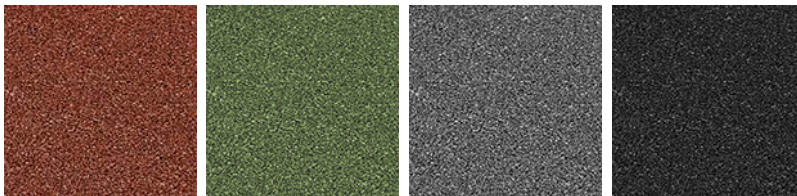
### Material

Material:

Recycled rubber granules bonded with MDI polyurethane

### Product design

Colours:



red, green, grey, black

Surface: smooth with open pores, beveled edges

### Dimensions / Tolerances / Weight

Length x width x thickness: Edge Profile: 1000 x 250 x 40/10 mm  
Corner Profile: 1000 x 250 x 40/10 mm

Weight: Edge Profile: approx. 6,2 kg  
Corner Profile: approx. 6,5 kg

Tolerances: length, width:  $\pm 0,8\%$ , thickness:  $\pm 2$  mm

The product data sheet is not subject to any change service! All information is without guarantee.

Latest version of this document available on [www.kraiburg-relastec.com/komfortex](http://www.kraiburg-relastec.com/komfortex)

page 1 of 2

## Product Testing

Chemical resistance:	conditionally resistant to acids and bases
Cold fracture resistance:	24h / -40°C, no fracture
Cold crack resistance:	5h / -30°C, no cracks

## Installation

Clean the existing paved substructure and be certain it is dry and level.

Securely cement KOMFORTEX® Edge and Corner Profile onto the substructure using dabs of 1-component PU adhesive cement.

Cement the joints between the slabs together with adhesive cement.

Note the complete installation instruction.