

Benefits & Features

- ✓ Tested to absorb projectiles up to 6,000 joules, thereby reliably preventing ricochets and stray bullets
- ✓ Paving stone shape allows for easy and cost-effective installation even on large indoor and outdoor areas
- ✓ Non-slip surface for secure stability in outdoor use
- ✓ Robust and durable, only minor impact marks are created left and damaged paving elements can be easily replaced.
- ✓ High surface stability in open weather conditions and continued use in outdoor operations

Shooting protection

- ✓ From 500 to 6,000 J (ballistic testing in accordance with the procedural and testing instructions for conducting ballistic tests on materials used by the German Armed Forces)

[DOWNLOAD INSTALLATION RECOMMENDATION](#)

SHIELDTAC® pavers

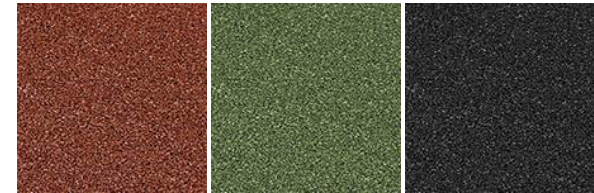
SHIELDTAC® pavers, previously known as **SPORTEC®** multi-pavers, are a specially developed safety floor covering for indoor and outdoor shooting ranges on both bound and unbound substrates. They are suitable for use in target, functional and movement areas and combine high resistance with functional comfort. Thanks to their elastic material structure, SHIELDTAC® pavers are able to absorb projectile energy in a controlled manner, thus helping to reliably prevent ricochets and stray bullets in the floor area. The slabs have been tested in a ballistic test with projectile energies of up to 6,000 joules and thus meet the increased safety requirements for floor surfaces in shooting ranges. The modular paving geometry enables a force-fit interlocking system and economical, simple and flexible installation, even with complex floor plans or temporary adjustments. At the same time, the damping properties ensure a comfortable, sure-footed and heat-insulating walking experience and reduce the mechanical stress on equipment and components.

Material

Material	PU-bonded rubber
-----------------	------------------

Product Design

Colour(s)	red, green, black
------------------	-------------------



low colour differences are conditional of material.

Dimensions / Weight / Tolerances

Thickness	43 mm (± 2 mm)
Length x width x height:	200 mm/ 165 mm (± 0,8 %) (full) 100 mm/ 165 mm (± 0,8 %) (half) 200 mm/ 140 mm (± 0,8 %) (starter)
Density:	approx. 900,0 kg/m ³
Weight:	approx. 1,2 kg/ piece (full) approx. 0,6 kg/ Piece (half) approx. 1,1 kg/ Piece (starter)

Product Testing

Fire resistance	Efl (DIN EN 13501-1)
Shooting protection	Tested by the Munich Ballistics Testing Centre and meets the requirements of the Technical Guidelines for Fixed Shooting Ranges (BFR StOSchAnlBw) as of 06/2022. (Test report no. 25M014A01)
Energy range	From 500 to 6,000 J (ballistic testing in accordance with the procedural and testing instructions for conducting ballistic tests on materials used by the German Armed Forces)
VOC-emission rating	French VOC Regulation AFFSET (A+)
Anti-slip property	R 10 (DIN EN 16165)
Tensile strength	min. 1,7 N/mm ² (internal tested)
Elongation at break	mind. 58 % (internal tested)
Hardness	60 ± 5 Shore A (DIN 53505)
Water permeability	23.878 mm/h (DIN EN 12616)
Temperature range	-30°C to 80°C (internal tested)
Abrasion	0,4 g (DIN EN ISO 5470-1)
Electrostatic properties	0,5 kV (EN 1815:2016) (antistatic)
Remaining deformation	0.74 mm / after 5 min 0.24 mm / after 24 h DIN EN 1516)
Light reflectance value (LRV)	3,0 % (at black) (EN 17317)
Stress -static	0.36 mm / after 30 min 0.32 mm / after 1 h 0.21 mm / after 6 h 0.18 mm / after 24 h 0.10 mm / after 72 h (DIN EN 1516)
Stress -dynamic	0.08 mm / after 30 min 0.06 mm / after 1 h 0.05 mm / after 6 h 0.05 mm / after 24 h 0.03 mm / after 72 h (DIN EN 1516)

Storage Advice

The goods should be stored in a dry room with good air circulation to prevent moisture and mould growth. The protective film must also be removed when the goods arrive to ensure proper ventilation and prevent condensation.

Installation

Installation has to be done in accordance to the Installation recommendation of **SHIELDTAC® pavers**. The latest version of the Installation Recommendation can be downloaded from the website of KRAIBURG Relastec GmbH & Co. KG.