

vibra supreme

Product Data Sheet no. 9454 - RV - 03

Issue: May 2021

DAMTEC® vibra supreme is a mat of rubber granulates for the absorption of vibrations as well as for impact sound insulation. It has unique compression recovery capability and has exceptionally resilient characteristics. The ideal area of application is for a material pressing over 0.50N/mm².

Product design

| | |
|-----------|--|
| Material: | Fine granules of rubber and rubber foam with a PU elastomer bonding agent. |
| Colour: | black or black/multicolour |
| Surface: | granule structure |

Dimensions / Tolerances / Weight

| | |
|----------------------------|---|
| Roll width: | 1,250 mm (± 1.5 %) |
| Roll length: | 8 m 6 m (± 1.5 %) |
| Thickness: | 5 mm 10 mm (± 1 mm) |
| Thickness / length [mm/m]: | 5 mm / 8 m, 10 mm / 6 m, 12.5/15/20 mm / 1 m (±1.0 mm / ±1.5 %) |

Product Testing

| | |
|----------------------|--|
| Tensile strength: | approx. 1.0 N/mm ² (ISO 1798) |
| Elongation at break: | approx. 30 % (ISO 1798) |
| Density: | 1,000 – 1,100 kg/m ³ |
| Temperature range: | -30° to 80°C |
| Flammability rating: | E _{fl} (ISO 11925/EN 13501) |
| Maximum pressure: | $\sigma_{\max} = 1.50 \text{ N/mm}^2$ (EN 826) |
| Short peaks: | 4.00 N/mm ² |

The product data sheet is not subject to any change service! All information is without guarantee.

Latest version of this document available on www.kraiburg-relastec.com/damtec

page 1 of 4

Installation

Installation is to be carried out in accordance with the DAMTEC® vibra installation instructions.

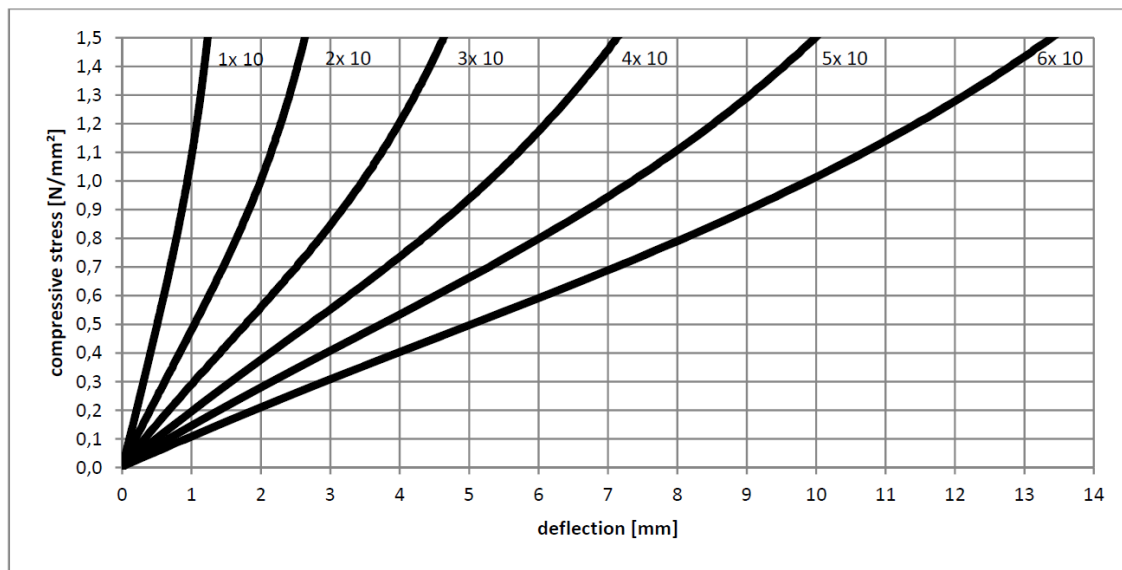
Other

Other: Further characteristic values and details on request.

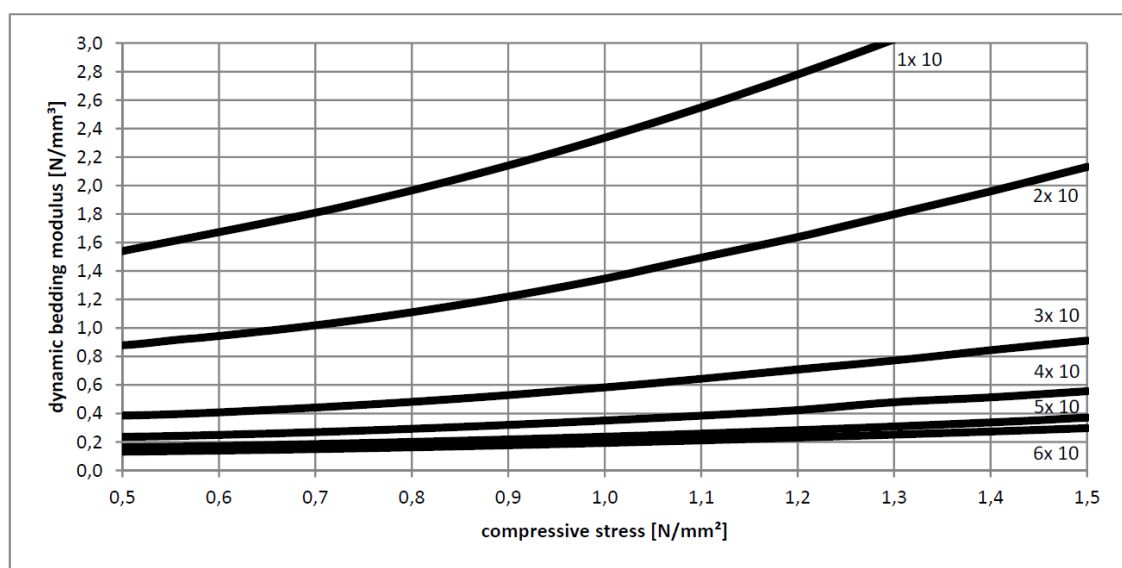
Disclaimer: The information provided is intended only as a summary and general overview on matters of interest. The information is not intended to be comprehensive nor does it constitute expert advice. KRAIBURG RELASTEC shall not be liable for incidental and/or consequential damages directly or indirectly sustained, nor any loss caused by not complying with relevant industry/product standards and improper use of any Damtec® products. Due to varying construction methods, any other circumstances not stated above should be brought to the attention of KRAIBURG RELASTEC for review. For suitability to the prevailing site conditions, it is advised that certified testing should be conducted. It is recommended to seek further advice on your application with our technical staff prior to use.

Measurement diagrams

Spring Characteristic:



Dynamic Bedding Modulus:

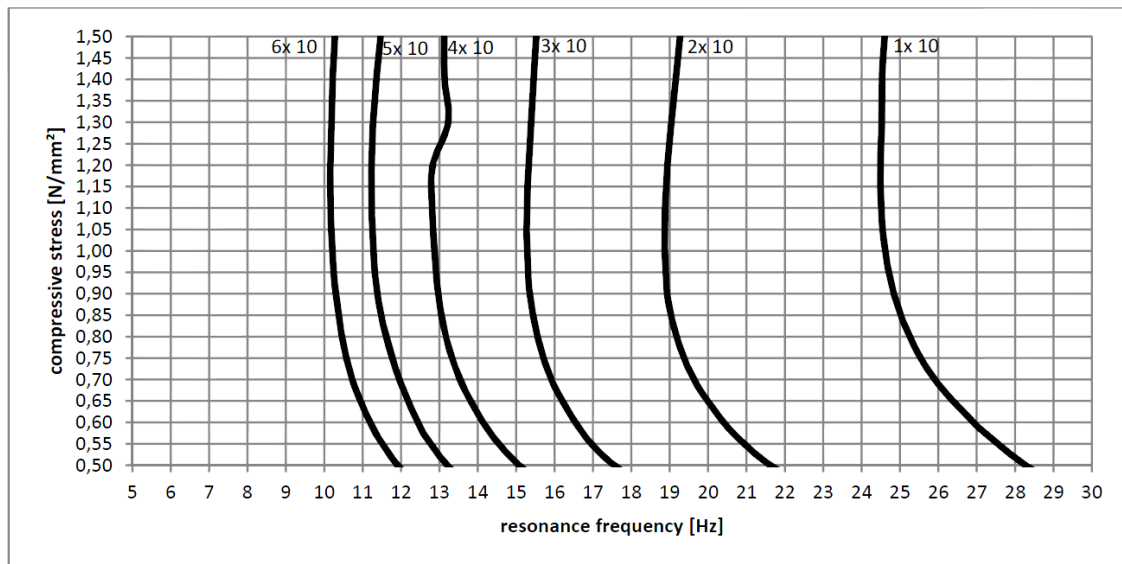


The product data sheet is not subject to any change service! All information is without guarantee.

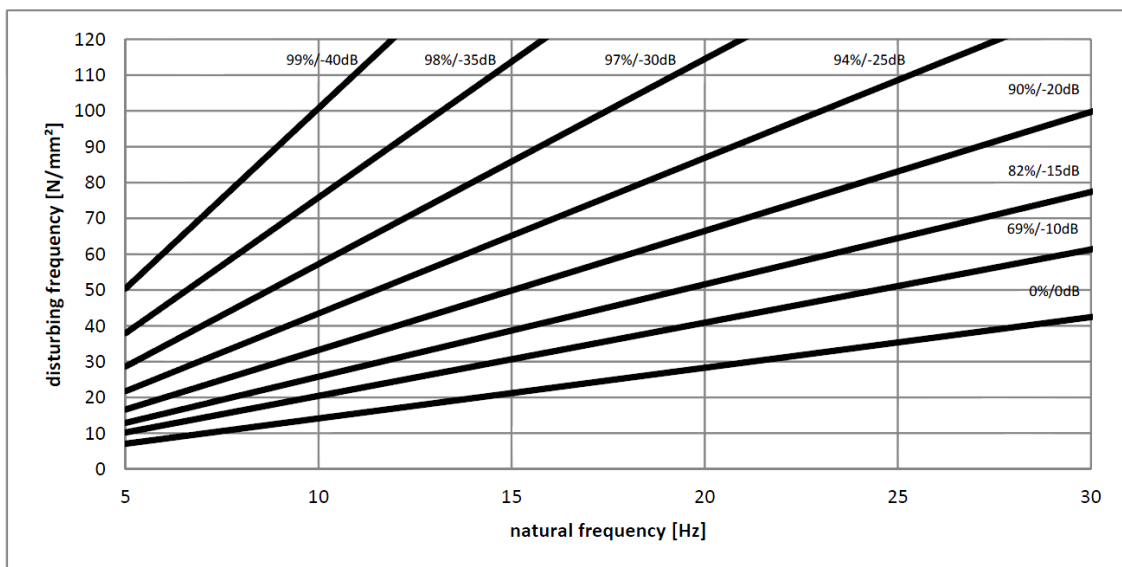
Latest version of this document available on www.kraiburg-relastec.com/damtec

page 3 of 4

Resonance Frequency:



Vibration Insulation:



The product data sheet is not subject to any change service! All information is without guarantee.

Latest version of this document available on www.kraiburg-relastec.com/damtec

page 4 of 4