

## step cross

Produktdatenblatt Nr. 9229 - R - 03

Issue: August 2022

**KRAITEC® step cross** is an elastic protection slab made with high-quality rubber granulate, which is used on balconies, terraces and flat roofs (for example to protect existing seals, from plastic films or bituminous membranes). **KRAITEC® step cross** balcony and terrace slab impresses with its attractive paving stone look. **KRAITEC® step cross** has permeable to water and has a high water drainage joint structure, that makes it ideal as a pool surround.

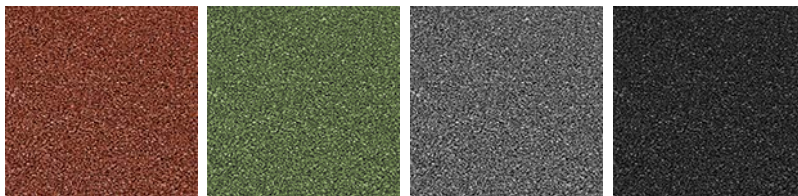
### Material

Material:

Polyurethane-bonded recycled Rubbergranulate (typical rubber smell possible)

### Product design

Colours:



red, green, grey, black

Surface: paving stone - look with open pores, chamfered edges

Lower side: smooth with open pores, with drainage channels

### Dimensions / Tolerances / Weight

Length x Width x Thickness: 500 mm x 500 mm x 30 mm ( $\pm 1.5$  %)Tolerances: length/width  $\pm 1.5$  %, thickness  $\pm 2$  mm

Weight slab: approx. 5,2 kg

Area weight: approx. 20,8 kg/m<sup>2</sup>

The product data sheet is not subject to any change service! All information is without guarantee.

Latest version of this document available on [www.kraiburg-relastec.com/kraitec](http://www.kraiburg-relastec.com/kraitec)

page 1 of 4

## step cross

Produktdatenblatt Nr. 9229 - R - 03

Issue: August 2022

### Product Testing

Fire resistance:	Efl (B2) (EN 13501-1) Broof(t1) (DIN EN 13501-5)
Service temperature range:	-30° to 80°C
Chemical resistance:	conditionally resistant to acids and bases
Environmental resistance:	rot-proof and water-resistant
Compression under traffic load:	10 % at approx. 18 t/m <sup>2</sup> 20 % at approx. 38 t/m <sup>2</sup> (test method based on DIN EN ISO 3386-2)
Water permeability:	given by open pores
Frost-resistant:	yes
Coefficient of thermal expansion:	approx. $10 \times 10^{-5}$ / °C (test method based on DIN EN 13471)
Salt water resistance:	Fully resistant (DIN EN ISO 175, DIN EN ISO 3386-2)
UV-Resistance:	resistant to DIN EN 1297 and DIN EN ISO 3386-2
Anti-slip properties:	R10 (for work rooms and work areas with danger of slipping according to DIN 51130: 2014-02)
Chlorine resistance:	Fully resistant (DIN EN ISO 175, DIN EN ISO 3386-2)
Sound Insulation:	The readings have been raised with the full specified layer structure in a laboratory measurement.
Impact sound insulation:	

The product data sheet is not subject to any change service! All information is without guarantee.

Latest version of this document available on [www.kraiburg-relastec.com/kraitec](http://www.kraiburg-relastec.com/kraitec)

page 2 of 4

## step cross

Produktdatenblatt Nr. 9229 - R - 03

Issue: August 2022

Warm roof		
PIR-insulation 140mm	Waterproofing: Bituminous roofing membranes	Waterproofing: PVC roofing membranes
Impact sound insulation improvement	$\Delta L_w = 27 \text{ dB}$	$\Delta L_w = 32 \text{ dB}$
Layer structure (top to bottom)	<ul style="list-style-type: none"> <li>- KRAITEC® step cross</li> <li>- 2nd waterproofing layer: PYE PV 200 S 5, slate-coated</li> <li>- 1st waterproofing layer: G 200 S 4, talcum-coated</li> <li>- Insulation: PIR FA WLS 024 (140 mm)</li> <li>- Bitumen vapour barrier: V 60 S 4 + Al</li> </ul>	<ul style="list-style-type: none"> <li>- KRAITEC® step cross plus</li> <li>- Waterproofing: PVC 1,5mm</li> <li>- Insulation: PIR FA WLS 024 (140 mm)</li> <li>- Bitumen vapour barrier: V 60 S 4 + Al AL</li> </ul>

## Installation

Install in accordance with the KRAITEC® step installation instructions.

The product data sheet is not subject to any change service! All information is without guarantee.

Latest version of this document available on [www.kraiburg-relastec.com/kraitec](http://www.kraiburg-relastec.com/kraitec)

page 3 of 4

### Other

Other:	Compatibility: Due to the large number of commercially available waterproofing membranes with different formulations, the compatibility (e.g. with plasticizers or blocking) must be approved by the manufacturer of the waterproofing membrane.
Disclaimer:	We want to use this information to advise you to the best of our knowledge and belief on the basis of our tests and experience. However, KRAIBURG Relastec GmbH & Co. KG cannot provide a guarantee for KRAITEC® products for the laying results in individual cases due to the wide range of application possibilities and the storage, laying and construction site conditions, which are outside our influence. You should carry out your own tests. Our technical service would be pleased to assist you.