

base MS**Product data sheet no. 9168 - R - 05**

Issue: July 2023

SPORTEC® base MS protects subfloors from damage by falling heavy objects, e.g. in weightlifting areas of fitness centres or training facilities. **SPORTEC® base MS** avoids this deep-impact damage while providing outstanding sound deadening as well and can be used both indoors and outdoors.

Material

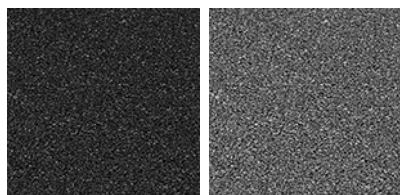
Material:

Polyurethane-bonded recycling tyre rubber granules

Product design

Colour(s): grey (black on request)

Colour(s):



black, grey

Surface: open pored structure

Lower side: dimpled base

Type of floor covering: Safety surface for indoor and outdoor

Note: low colour differences are conditional of material

Dimensions / Tolerances / WeightThickness(es): 30 mm (± 2 mm)

The product data sheet is not subject to any change service! All information is without guarantee.

Latest version of this document available on www.kraiburg-relastec.com/sportec

page 1 of 3

base MS

Product data sheet no. 9168 - R - 05

Issue: July 2023

Length x width:	500 mm / 500 mm ($\pm 0.8 \%$) 1000 mm / 500 mm ($\pm 0.8 \%$) 1000 mm / 1000 mm ($\pm 0.8 \%$)
Area weight:	approx. 25.6 kg/m ²
Weight slab:	approx. 6.4 kg (at 500 mm x 500 mm) approx. 12.8 kg (at 1000 mm x 500 mm) approx. 25.6 kg (at 1000 mm x 1000 mm)

Product Testing

Fire resistance:	E _{fl} (B2) (EN 13501-1)
Tensile strength:	min. 2.0 N/mm ² (EN ISO 1798)
Elongation at break:	min. 100 % (EN ISO 1798)
Hardness:	60 \pm 5 Shore A (DIN 53505)
Temperature range:	-30°C to 80°C (internal tested)
Wear behaviour:	rV = 14.3 (DIN V 18035-6)
Force reduction:	51 % (DIN V 18035-6)
Light reflectance (LRV):	value 3.0 % (at black) (EN 17317)
VOC emission rating:	



The product data sheet is not subject to any change service! All information is without guarantee.

Latest version of this document available on www.kraiburg-relastec.com/sportec

page 2 of 3

Installation

Installation has to be done in accordance to the Installation Recommendation of **SPORTEC® base MS**. After installation, the room must be ventilated to remove specific odors from rubber flooring (and adhesive). A regular airing of the room is recommended. The latest version of the Installation Recommendation can be downloaded at the website of KRAIBURG Relastec GmbH & Co. KG.