

1. Application Sector

DAMTEC® estra 3D is the ideal rubber underlay in floating screed /concrete slab systems or underneath rigid floor elements on wooden sub floors.

DAMTEC® estra 3D is particularly quick and easy to install and is providing extremely high resistance to compressive loads and outstanding elasticity. It is equally well suited for applications in residential, office and commercial buildings.

2. Substrate

Sweep the existing dry concrete surface clean with a broom before installation. In case of larger unevenness or installed piping is if necessary a levelling screed or a levelling filler to be installed. If necessary install thermal insulation. Installation instructions of the manufacturers by levelling layers and thermal insulation are to be considered.

3. Storage / Preparation

DAMTEC® estra 3D, the insulating underlay, should be stored in dry areas at constant temperature. Before installation of floor system components, install a peripheral insulation strip over all structural components which extend upward or laterally such as walls, pipes etc. This is required to avoid formation of sound conduction channels within the structure. The peripheral strip must be thick enough to ensure proper insulation and must extend upward beyond the subsequent floor surface. Place the underlay over the entire surface to be covered. Trim to size slightly larger than the surface covered.

Leave the underlay in place for one day (min. 24 hours) to allow dimensional relaxation and temperature equilibration.

4. Installation

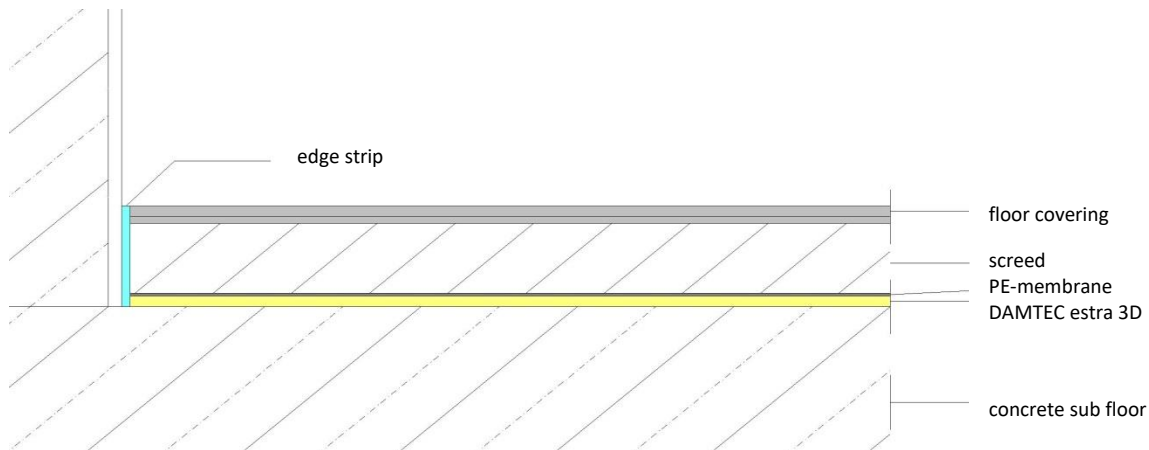
Trim the underlay to the exact dimensions of the surface covered.

Position each underlay section flush to the adjacent underlay section without overlap.

Seal joints with adhesive tape to avoid screed penetration and resultant sound conduction channels. Cover underlay with PE membrane which should also cover the peripheral insulation strip and extend above the subsequent floor surface.

To avoid formation of sound conduction channels, be certain that screed cannot enter into the insulating underlay.

Install the screed layer in accordance with applicable standards and regulations.

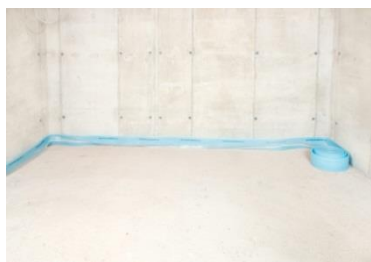
**DISCLAIMER:**

The information provided is intended only as a summary and general overview on matters of interest. The information is not intended to be comprehensive nor does it constitute expert advice. KRAIBURG RELASTEC shall not be liable for incidental and/or consequential damages directly or indirectly sustained, nor any loss caused by not complying with relevant industry/product standards and improper use of any Damtec® products. Due to varying construction methods, any other circumstances not stated above should be brought to the attention of KRAIBURG RELASTEC for review. For suitability to the prevailing site conditions, it is advised that certified testing should be conducted. It is recommended to seek further advice on your application with our technical staff prior to use.

The installation instruction is not subject to any change service! All information is without guarantee.
Latest version of this document available on www.kraiburg-relastec.com/damtec

Page 2 of 4

5. Installation as a sample

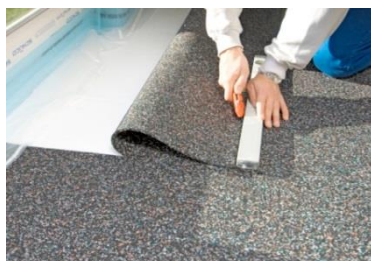


1. Before installation of floor system components, install a peripheral insulation strip over all structural components which extend upward or laterally such as walls, pipes etc.

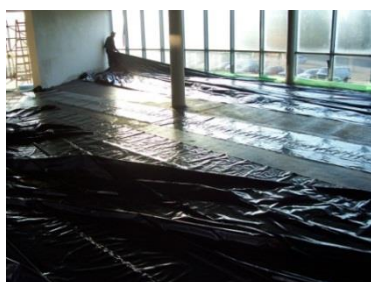
This is required to avoid formation of sound conduction channels within the structure. The peripheral strip must be thick enough to ensure proper insulation and must extend upward beyond the subsequent floor surface.



2. Place the underlay over the entire surface to be covered. Trim to size slightly larger than the surface covered. Leave the underlay in place for one day to allow dimensional relaxation and temperature equilibration.



3. Use a regular carpet knife in conjunction with a steel straightedge for cutting to size.



4. Cover underlay with PE membrane which should also cover the peripheral insulation strip and extend above the subsequent floor surface.



5. To avoid formation of sound conduction channels, be certain that screed cannot enter into the insulating underlay.



6. Install the screed or light weight cement.



7. After finished installation start with floor finish. You can use other **DAMTEC®** products again for sound insulation.