

## 1. Application Sector

**DAMTEC® vibra 30/50/100/170/280/700/1500** are mats of rubber and polyurethane granulates for the absorption of vibrations as well as for impact sound insulation. They have unique compression recovery capability and have exceptionally resilient characteristics. The ideal area of application is for a material pressing up to 1.5 N/mm<sup>2</sup>.

## 2. Storage

**DAMTEC® vibra** should be stored in dry areas at constant temperature. Mats should be stored wrapped until use. If the packaging is removed, dry and clean storage must be ensured and long-term direct contact with UV radiation must be avoided

## 3. Preparation / Substrate

The existing concrete cover or blinding layer must be sufficiently stable, dry and clean-swept. Protruding tips and stones must be removed accordingly. Very minor undulations in the concrete surface should not be detrimental to the properties of the material. In the surface no gravel nests are allowed.

The unevenness should be less than 3 mm. Under a 2 m bar it should be less than 10 mm



Surface must be free of sharp edges



Build offsets with sharp edges



The installation instruction is not subject to any change service! All information is without guarantee.  
Latest version of this document available on [www.kraiburg-relastec.com/damtec](http://www.kraiburg-relastec.com/damtec)

#### 4. Installation

Place mats according to installation plan. If necessary, trim the mat to the exact dimensions of the surface covered. Place the mats tightly against each other and cover with adhesive tape to avoid screed penetration and resultant sound conduction channels.

It is recommended to glue the horizontal mats to the subsurface in dots or strips to prevent slipping

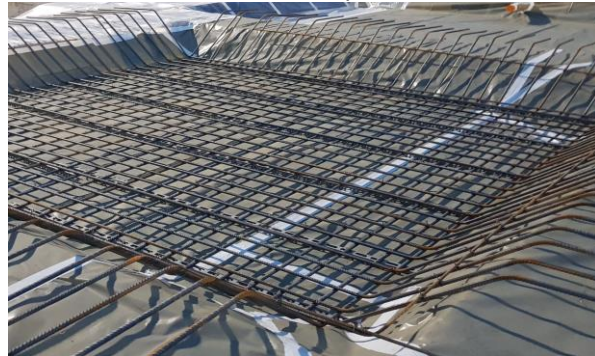
Cover mats with PE foil before pouring concrete



Wrap PE/PU foam around penetrations.



Use suitable reinforcement spacers.





Side mats should be fully glued to the walls. Mechanical fastenings should be avoided. If necessary and if the type of sealing system allows it, cover dowels with sufficiently large **DAMTEC® vibra** pads. Avoid the risk of sound bridges and damage to the waterproofing system.

Install the screed/concrete layer in accordance with applicable standards and regulations.



#### DISCLAIMER:

The information provided is intended only as a summary and general overview on matters of interest. The information is not intended to be comprehensive nor does it constitute expert advice. KRAIBURG RELASTEC shall not be liable for incidental and/or consequential damages directly or indirectly sustained, nor any loss caused by not complying with relevant industry/product standards and improper use of any Damtec® products. Due to varying construction methods, any other circumstances not stated above should be brought to the attention of KRAIBURG RELASTEC for review. For suitability to the prevailing site conditions, it is advised that certified testing should be conducted. It is recommended to seek further advice on your application with our technical staff prior to use.

The installation instruction is not subject to any change service! All information is without guarantee.  
Latest version of this document available on [www.kraiburg-relastec.com/damtec](http://www.kraiburg-relastec.com/damtec)

Page 3 of 3