

Subbase

The substrate must be frost-proof and level.

Installation

Depending on the condition of the substrate, the EUROFLEX® trees can be installed directly with the metal pipe onto a load-bearing compacted substructure in a prepared fresh concrete bed.

The metal pipe must be bonded to the trunk of the trees with Ottocoll M 500 (red-brown) or P83 (gray) polyurethane adhesive.

This requires ½ cartridge for bonding the metal pipe and the tree crown.

ATTENTION: It must always be ensured that the trees are in full contact with a solid surface.

Installing the ground socket

Screw the ground socket with the screw-in rod into the ground



Raise the ground socket to the appropriate height.
Remove the two inner reducers.
Insert the remaining 3 reducers.





Insert the metal sleeve up to the lower stop point.
Tighten with the Allen screw.



Installing the trunk

Apply 1-component PUR adhesive (e.g. Ottocoll P83 and Ottocoll M 500) to the pipe using a glue gun.

Apply adhesive to the recess in the trunk.



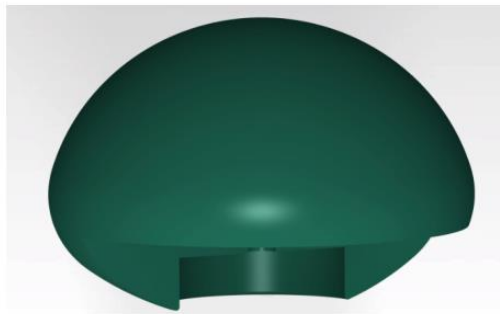
Place the log on the pipe.

The supporting surface of the trunk must be level and stable. If this is not guaranteed due to the installation of loose bulk material as fall protection material (e.g. sand, wood chips or similar), a concrete foundation with the dimensions 260mm x 260mm x 560mm depth must be provided.

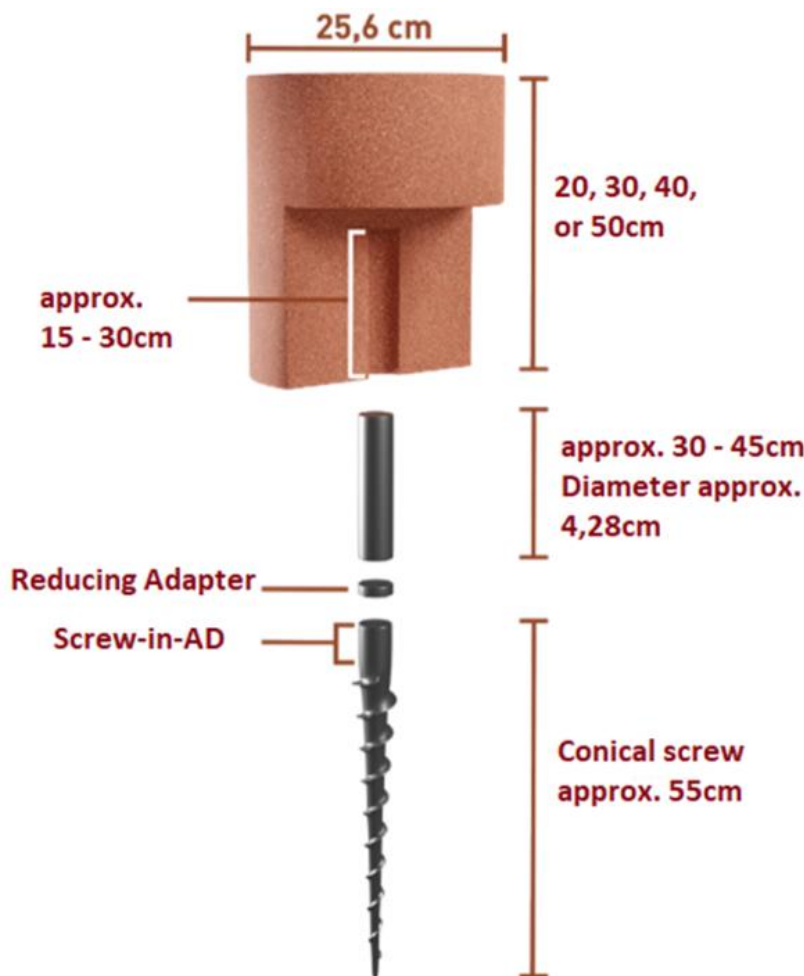
All information without guarantee, subject to change. The installation instruction is not subject to any change service. Each current and valid from can be recalled at www.kraiburg-relastec.com/euroflex/

Apply 1-component PUR adhesive (e.g. Ottocoll P83) to the underside of the treetop.
Then press firmly onto the trunk.
Cure for at least 24 hours before use.

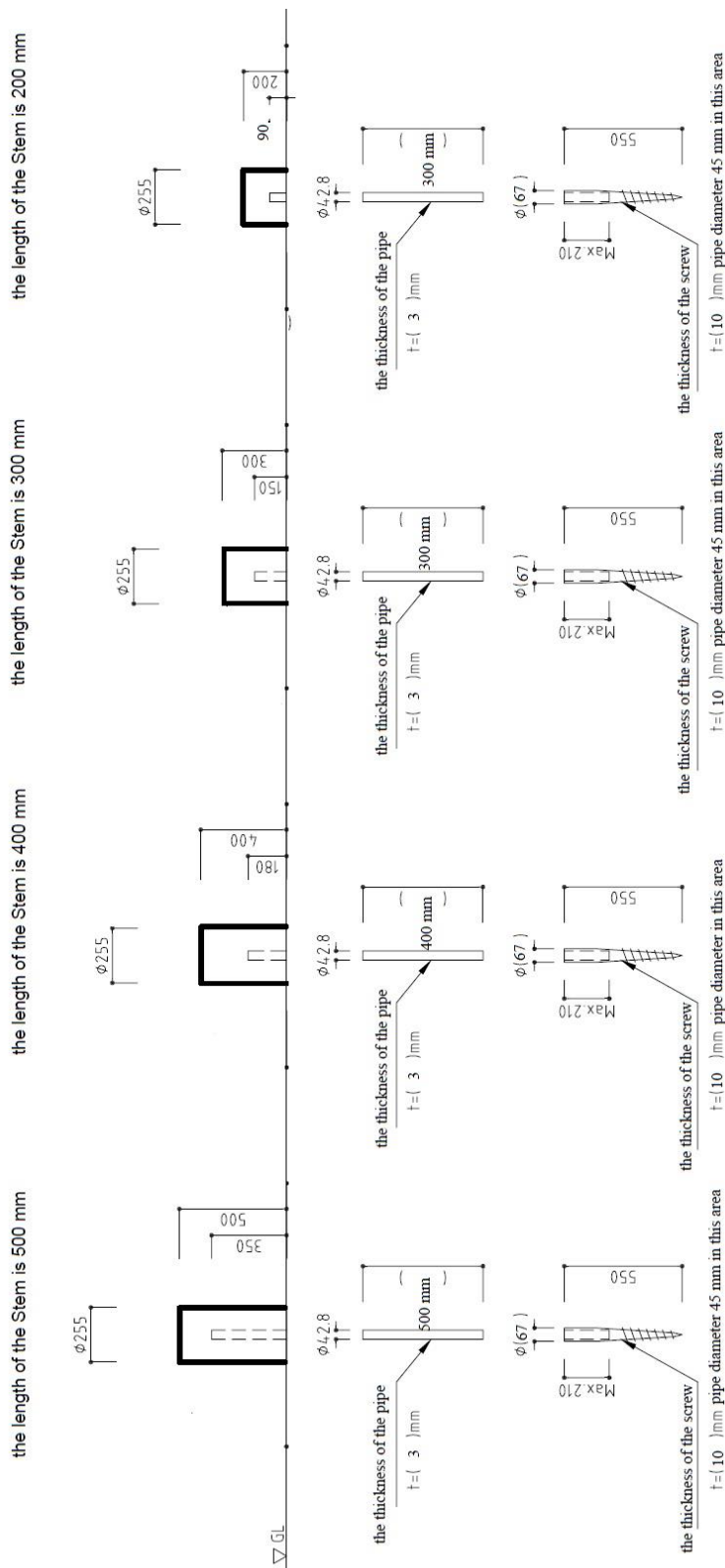
D 375; 595 mm



H 241; 415mm



All information without guarantee, subject to change. The installation instruction is not subject to any change service. Each current and valid from can be recalled at www.kraiburg-relastec.com/euroflex/



All information without guarantee, subject to change. The installation instruction is not subject to any change service. Each current and valid from can be recalled at www.kraiburg-relastec.com/euroflex/