

Installation Instruction

Storage of EUROFLEX® Products and adhesive cements

EUROFLEX® products should normally be stored in dry areas at constant temperature above 10°C. If stored below 10°C, store the slabs at the installation site temperature (> 10°C) for at least 2 hours before installation.

Important note: Adhesive cements and design flooring must be stored at all times in dry locations above 0°C.

Required Tools and materials

Cut heavy-duty cutting knife (Hooked blades for the covering), pad saw, T-square for cutting assistance, carpet ruler



Mark plumbs or chalk line, chalk, and measuring tape



Gluing crepe adhesive tape, drilling machine with mixer tool for handling the 2 component polyurethane glue, spatula TKB B2, work glove



All information without guarantee, subject to change. The installation instruction is not subject to any change service. Each current and valid from can be recalled at www.kraiburg-relastec.com/euroflex/

Seite 1 von 13

Installation Design flooring pressure roller, pressure roller, rub-on cork



Preparation of subbase

Substrate

The testing and preparation of the substrates must be carried out in accordance with VOB Part C, DIN 18365 and the state of the art must be tested and ready for laying. The substrate must be level, sound, dry, free from cracks, clean and free from materials that would impair adhesion.

The following limits apply to the residual moisture of screeds:

Screeds	Permissible residual moisture in CM-% without hot water Underfloor heating	Permissible residual moisture in CM-% with hot water Underfloor heating
Calcium sulfate and calcium sulfate flowing screed	$\leq 0,5$	$\leq 0,3$
cement screed	$\leq 2,0$	$\leq 1,8$

For installation at ground level the basement is taken off till attended depth plus thickness of the slabs and the layer.

For installation on existing subbase it is recommend using the EUROFLEX® edge and corner profile as bordering.

Installation playing equipment's
Install at first the playing equipment's.



For complicated playground equipment constructions such as the following:
(Playing equipment company Prouriba)



All information without guarantee, subject to change. The installation instruction is not subject to any change service. Each current and valid from can be recalled at www.kraiburg-relastec.com/euroflex/

Seite 3 von 13

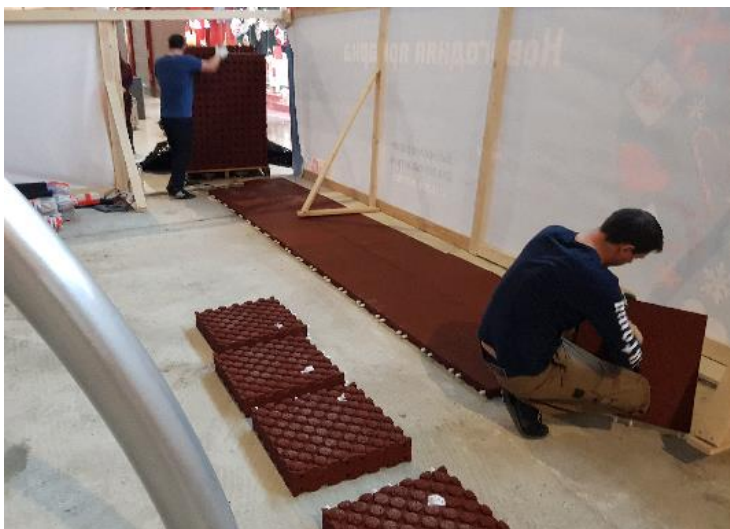
Is strongly recommended to install only the necessary foundation fasteners to facilitate installation of the panels and vinyl flooring.

Cleaning the subbase and destock the slabs from the palette to relax.



Installation slabs

Install the first row of EUROFLEX® slabs by placing them precisely along the chalk line or if possible start at a wall side.

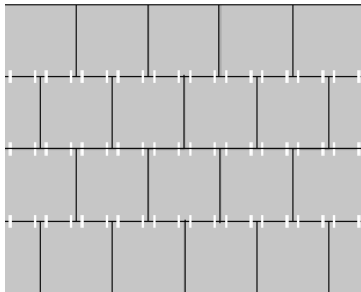


Start the second row (and every second row thereafter) with a half slab. Connect the slabs of the second row to the first by the integrated connector pins. The masonry-style configuration provides stability of the installed slabs. Cut the last slab in each row to the required size using a heavy-duty carpet knife or a sabre saw.

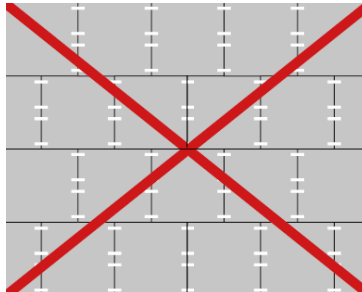
All information without guarantee, subject to change. The installation instruction is not subject to any change service. Each current and valid from can be recalled at www.kraiburg-relastec.com/euroflex/

Seite 4 von 13

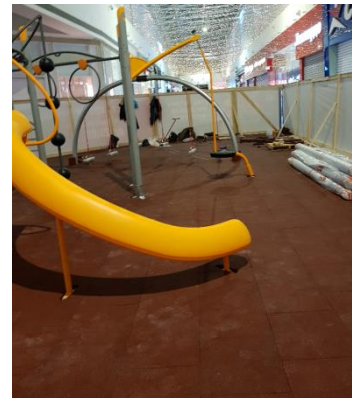
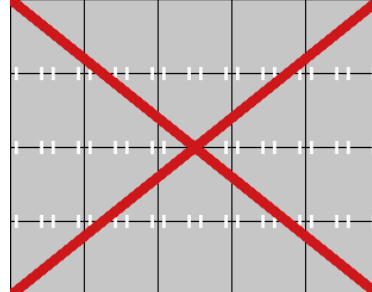
Correct: „T“-joints



**Incorrect: „T“-joints
Installed in line**



Incorrect: cross joints



Cut-out at the equipment base should be cut accurate.



All information without guarantee, subject to change. The installation instruction is not subject to any change service. Each current and valid from can be recalled at www.kraiburg-relastec.com/euroflex/

Seite 5 von 13

- Cutting with a knife



Or with a pad saw wooden blade:

Mark the cut-out and cut



Clean the installed area very well.



By using the EUROFLEX® edge and corner profile as bordering it is needful to glue them to the subbase and to the first line of slabs.

Cutting of the design layer will be done exactly in lane like the attached delivered cut plan shows.

Attention! Please calculate minimum 5cm circular material more for offcut.

The covering must not be kinked, as kinks may be visible!!!

All information without guarantee, subject to change. The installation instruction is not subject to any change service. Each current and valid from can be recalled at www.kraiburg-relastec.com/euroflex/

Seite 6 von 13

Check the goods for material and transport damage before processing and in daylight.
If defects are detected during installation, stop processing immediately so that the goods can be inspected or, if necessary, exchanged.

Later complaints will not be accepted.

Before installing the vinyl flooring, the sheets must be allowed to acclimatize for a period of at least 48 hours in the rooms to be installed or in adjacent rooms with the same room climate.

In principle, cut a seam in the area of the production edge (double seam cut).

Allow the web edges to overlap 2 cm per web and, if necessary, adjust the motif from the center.

Trim the walls and rising components, etc. roughly precut.

Cut the overlapping web edges along a steel rail with a double seam trim.

Suitable special tools can also be used for seam trimming can also be used.

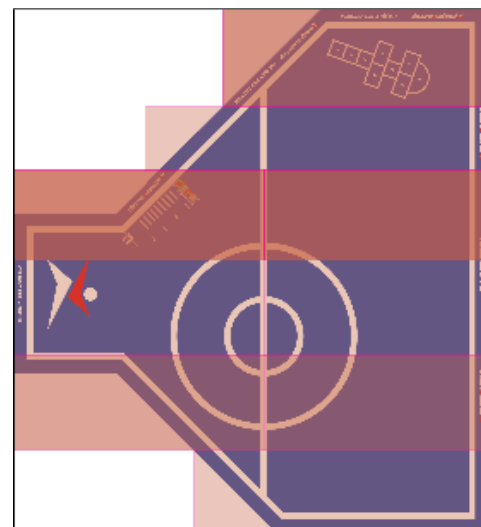
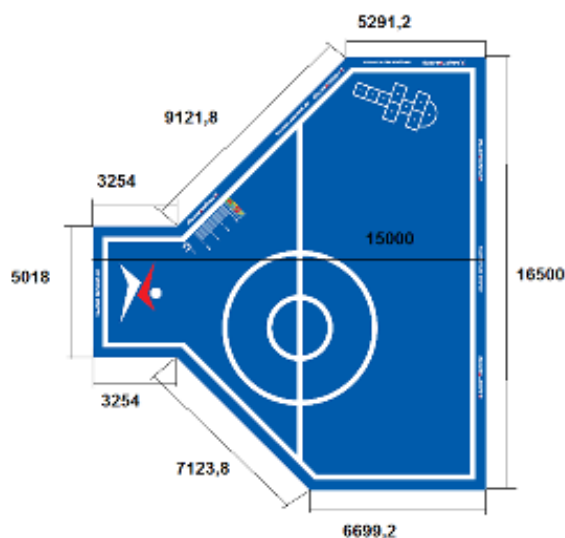
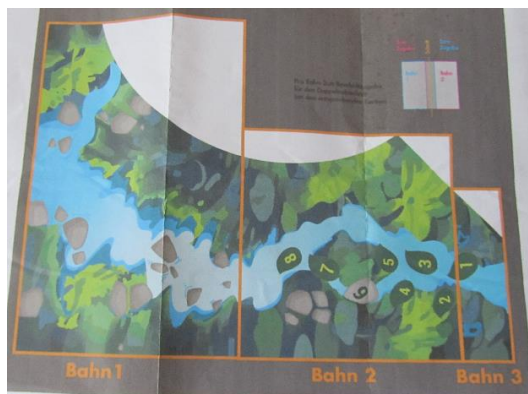
After the double seam cut, fold back the sheets approx. half lengthwise or crosswise (depending on the room geometry) and apply a suitable adhesive.

Pay particular attention to the specifications of the adhesive manufacturer.

Depending on the skills of the installer, the strips can made in double cuts.



For inexperienced installers, it is recommended to use the individual strips before gluing to be cut to the exact design.



Check the sheets for material defects during installation.
Membranes with visible material defects must not be laid.
Installed membranes with visible material defects are excluded from complaints!

All information without guarantee, subject to change. The installation instruction is not subject to any change service. Each current and valid from can be recalled at www.kraiburg-relastec.com/euroflex/

Seite 8 von 13

For gluing the visual layer on top of the EUROFLEX® impact protection slabs it is recommended to use Sportec 700 2- K Polyurethane glue or similar. Both components of glue must mix thoroughly for application.



The application of the glue happens in lane usage approx. 1kg/m².



Every lane must press with the rub-on cork or pressure roller into the glue bed. To avoid glue on the layer material use crepe adhesive tape to save the joint areas. Glue spots on the layer must remove immediately.



All information without guarantee, subject to change. The installation instruction is not subject to any change service. Each current and valid from can be recalled at www.kraiburg-relastec.com/euroflex/

Seite 9 von 13

Cutouts for unit feet

The cutouts for the unit feet, fastening elements, etc. must be made as accurately as possible and cut as possible and be cut and glued to fit exactly.

To do this, first cut straight into the area around the unit feet.



When using a cutter knife with a round blade, the recesses can then be cut precisely.



All information without guarantee, subject to change. The installation instruction is not subject to any change service. Each current and valid from can be recalled at www.kraiburg-relastec.com/euroflex/

Seite 10 von 13



Recesses in device feet

The recesses for the device feet, fastening elements, etc. must be as precise as possible, and glued precisely.

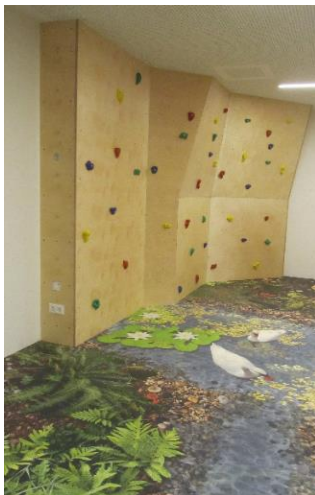


All information without guarantee, subject to change. The installation instruction is not subject to any change service. Each current and valid from can be recalled at www.kraiburg-relastec.com/euroflex/

Seite 11 von 13



After a time, interval of approx. 30-45 minutes (depending on the climatic conditions in the room), the covering must be rubbed again or rolled down with a cross-sectional roller.



With the Visual flooring, a corresponding polyurethane seal is already provided at the factory upset.

The design floor covering can also be cold welded if required.

This should be done using cold welding agent type T
(e.g. <https://www.mueller-pvc-naht.de/produkte/typ-t/>).

In any case, it is essential to observe the specifications of the cold welding agent manufacturer.

All information without guarantee, subject to change. The installation instruction is not subject to any change service. Each current and valid from can be recalled at www.kraiburg-relastec.com/euroflex/

Seite 12 von 13

Cleaning and care instructions

The design floor is easy to clean and maintain thanks to the finished surface. For longevity and long-lasting enjoyment, the following tips for maintaining value should be observed. Clean the floor covering only with a broom, vacuum cleaner or damp cloths or mops.

The newly installed vinyl floor should be subjected to a final cleaning before use.

Production-related residues and construction dirt are removed.

For final cleaning, we recommend the JOKA PVC Design Care Set.

First remove the coarse dirt by sweeping or vacuuming.

For heavy soiling, dilute the PU cleaner in a ratio of 1:10 (1L to 10L water). For light soiling, reduce the concentration accordingly. Then spread the solution and, after a short reaction time, work the floor covering with scrubber or single-disc machine and red pad/scrubber brush.

Pick up the dirt liquor with absorbent wide mop or spray vacuum cleaner with hard floor adapter. Finally, wipe twice with clear water to neutralize.

In case of very low soiling, a simple wiping with PU cleaner may be sufficient.

<https://www.jordanshop.de>

Due to the large number of different manufacturers for cleaning agents and cleaning agents and cleaning devices, these instructions can only approximately describe the describe the corresponding cleaning process. In order to achieve a perfect result, it is recommended to consult a specialist company according to the conditions on your according to your building conditions. One example is the full care emulsion from Pallmann.



Attention!!

Even when cleaning larger surfaces, we do not recommend using a cleaning machine to avoid damaging the surface.