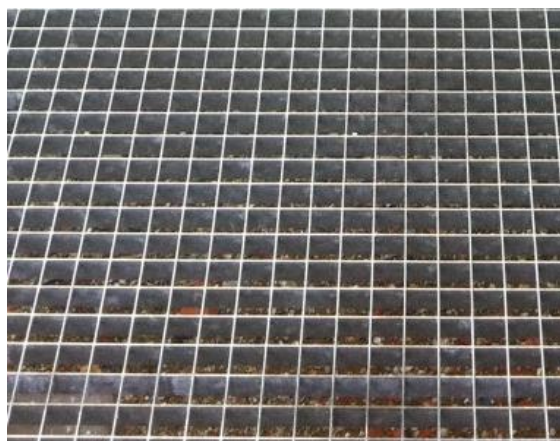


## 1. Substrate

Best conditions for laying the tiles are steel gratings, as used in alpine areas or a base made of asphalt, concrete or screed. The solid substrate has to be dry, leveled, free of dust and of foreign material (e.g. residual mortar, oil etc.) as well as free of cracks in the substrate. Not possible is to install the tiles on soft undergrounds. The tiles need a solid base for safe bear on the substrate.



Steel grating; suitable, solid surface

## 2. Preparation Work

If a solid surface will be used for installation, the surface of the substrate has to be brushed and clean thoroughly. Minor unevenness must be levelled e.g. with a liquid filler compound before starting with the installation of the tiles.

Destack the tiles from the pallet and lay down loose on the ground and store them in the area you want to install for about 1-2 days before installation to ensure correct acclimation.

The ambient temperature for installation should be between 10 °C and 25 °C.

For an easier installation, a chalk line could be drawn (with a chalk box).



Creating chalk lines

The installation recommendation is not subject to any change service! All information is without guarantee.

Latest version of this document available on [www.kraiburg-relastec.com/sportec](http://www.kraiburg-relastec.com/sportec)

page 1 of 4

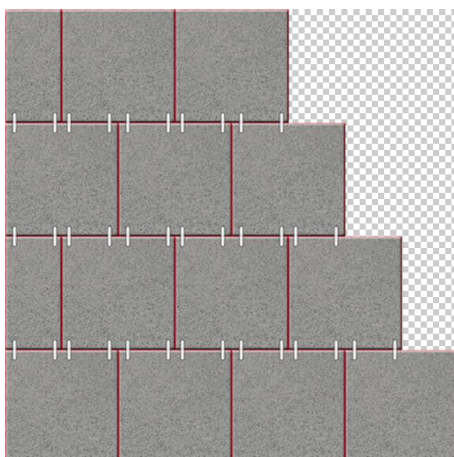
### 3. Installation

Start installation with the first tile at the wall, steel grating edge or chalk line. Lay the tiles in one line along the edging or marked line by lay tile to tile side by side without a gap. In case of curves cut tiles with a cutter or electric saw in needed shape, start laying the tiles in the curve area and get a straight line to lay the next row of tiles directly on it.

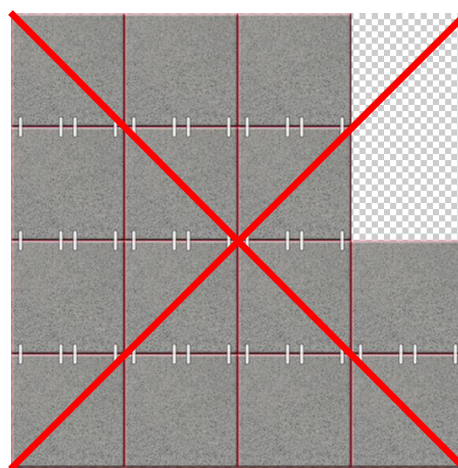


Installation of the tiles along an edging

Start second row of tiles with a half tile to ensure that the laying is in T-connection. The third row with a complete tile again, then a half tile and consecutive in this procedure. Connect the tiles with the delivered connector pins.



Correct installation in T-connection;



false installation in cross joints

In the case of rubber tiles, due to the elasticity tolerances it can occasionally happen that the dimensions of a tile differs to surrounding ones and does not fit flush with them. If this is case, and if extra pressure to squeeze all the surrounding tiles together does not help, the tile should be put aside and another one should be used instead until the best possible finish is found. A video is provided for this, [scan QR code on the right.](#)

video:



The installation recommendation is not subject to any change service! All information is without guarantee.

Latest version of this document available on [www.kraiburg-relastec.com/sportec](http://www.kraiburg-relastec.com/sportec)

page 2 of 4

The concerned tile can then be used elsewhere where a better fit is possible or as a finishing tile where cutting is required. During the installation, ensure that you have no gaps between individual tiles use a rubber mallet where necessary to close the gaps and make sure that the connector pins line up

#### 4. Coating

It is not recommended to apply a coating on **SPORTEC® mountain** tiles in general.

#### 5. Important details

The tiles may only be installed on levelled, dry and clean substrate or a steel grating. The area can be used directly after installation.

When calculating the needed amount of material, calculate with **3%** for **cut-off**.

When possible the installation should be done in one day to have the same conditions for laying the tiles at all the time.

The tiles could be split with a jigsaw or a cutting knife and could be brought into any shape.

It is possible to uninstall and stack or store the tiles and install again when needed fast and easy. Pay attention when install again at the connection with connector pins and laying the tiles in T-connection.

Rubber products have an odour typical of the material, which decreases over time. This can be accelerated by regular airing.

**In case of claims caused by falsely delivered goods, defect goods, insufficient quantities or other possible faults stop the installation immediately and make a claim directly. A claim of delivered material is only possible with untreated and uninstalled material and with confirmation of the production batch reference number. This number is printed on a sticker on the underside of each tile.**



**DISCLAIMER:**

These recommendations for applications and installation are based on our extensive experience and on current technological practice. Our liability and responsibility in the event of damages shall be limited to the extent defined in our General Terms and Conditions of Business, regardless of the above recommendations or of any statements made or advice given by our sales representatives or applications engineering staff.