

## Installation recommendation

This instruction is valid for following **SPORTEC®** products: **supercell DC1** and **supercell DC2**.

### 1. Substrate

The substrate must be tested and evaluated before installation in accordance with the national standard (DIN 18365).

Suitable substrates are, for example, asphalt, concrete or screed. The substrate ready for covering must be pressure and tension resistant, even, permanently dry, load-bearing, clean and free of dirt and cracks that could impair the bonding.

The substrate must comply with the limit values for evenness deviations in accordance with DIN 18202 (increased requirements = max. 3 mm difference over a distance of 1 meter). Slight unevenness must be repaired with a suitable leveling compound.

Depending on the substrate, it may be advisable to prime the substrate with a suitable (barrier-) primer.



Even, suitable substrate made of poured screed



not suitable substrate

### 2. Preparation work

The surface of the substrate has to be brushed clean before starting installation. Minor unevenness must be levelled with a liquid self-leveler or filler compound. It is also our recommendation to apply a primer or bonding agent if necessary.

The **SPORTEC®** elastic layer material is delivered in tiles and must be stored on site for 1-2 days at a temperature between 15 °C and 25 °C before installation. On the day prior to installation roll out the material fully, but do not bond down, so that the rolls can relax.

**Elastic Layers for Indoor Areas**

Installation Recommendations no. VA08 - R - 00

Issue: March 2024

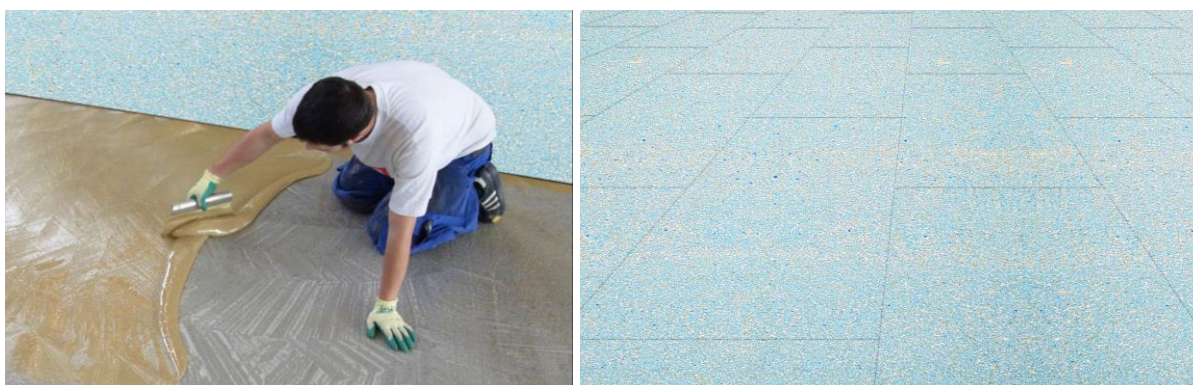


Mixing of the 2-component PU adhesive

**3. Installation**

Before installation mix both components of adhesive. Directly after mixing, pour all of the glue out evenly over the prepared installation area (approx. 0.7kg/m<sup>2</sup> if using **SPORTEC 700 2K-PU adhesive**) so that none is left in the pot. Follow adhesive manufacturer's instructions if not using SPORTEC 700 2K-PU adhesive.

Apply the glue evenly with a notched trowel over the area where **SPORTEC® supercell DC 1** or **supercell DC 2** will be laid out. Use a notched trowel with a notch depth as recommended by the adhesive manufacturer to achieve the correct spread rate. After the glue is spread out correctly, lay the material out into the adhesive bed (please take note of different adhesives curing time).



Adhesive application to clean substrate; roll out into the adhesive bed

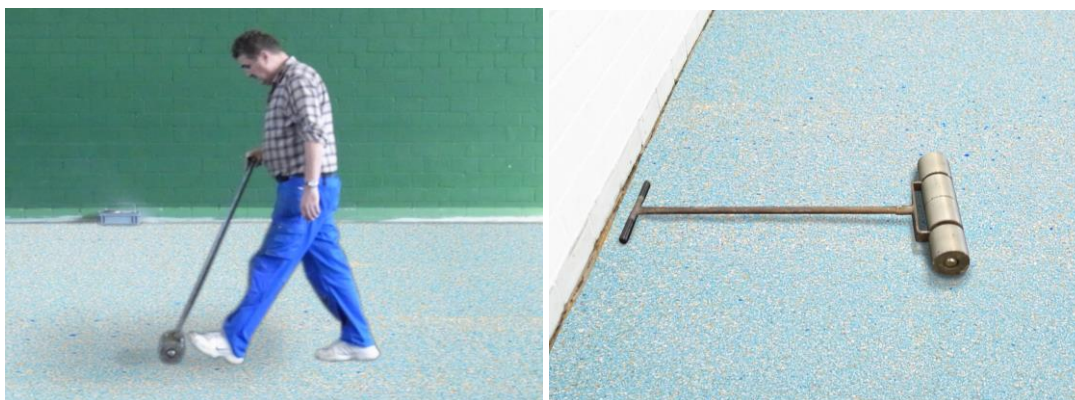
Ensure that the tile is installed into the glue bed and position the adjoining edges flush against one another so that there are no gaps between adjacent tiles.

After the adhesive has grabbed but before adhesive is fully cured, contact pressure should be applied to the surface with a roller to eliminate air bubbles underneath the material.

**Elastic Layers for Indoor Areas**

Installation Recommendations no. VA08 - R - 00

Issue: March 2024



Scrolling of the floor with a pressure roller

**4. PU-applying and coating**

After installation of **SPORTEC® supercell DC 1** or **supercell DC 2**, and when adhesive is completely cured, start application of the PU-coating or other floor finish. Refer to manufacturer instructions and installation guidelines to ensure the correct use of a suitable floor finish.

**5. Important details**

When using a primer or bonding agent, adhesive and PU self-leveling coating pay attention to, and follow the manufacturer's instructions and check the compatibility to **SPORTEC®** products.

When calculating the needed amount of material, calculate with **3%** for **cut-off**.

Any glue which seeps up to the surface must be removed immediately, and the affected area cleaned thoroughly.

The SPORTEC elastic layer can only be adhered to a dry and clean substrate. Humidity levels should be measured in advance of installation to ensure compliance with adhesive requirements, and if necessary, the installation should be delayed.

After installation, take care to avoid walking on any of the floor surfaces until the adhesive is fully cured.

Fixings, sockets and anchor points on the floor, e.g. for football goals, badminton nets etc. must be marked and cut out of the elastic layer using a normal sharp carpet cutter or similar.

**Elastic Layers for Indoor Areas**

Installation Recommendations no. VA08 - R - 00

Issue: March 2024

**In the case of claims caused by mistakenly delivered goods, defective goods, insufficient quantities or other possible faults stop the installation and make a claim immediately. A claim of delivered material is only possible with untreated/uninstalled material and with a confirmation of the order number and delivering details.**

**DISCLAIMER:**

These recommendations for applications and installation are based on our extensive experience and on current technological practice. Our liability and responsibility in the event of damages shall be limited to the extent defined in our General Terms and Conditions of Business, regardless of the above recommendations or of any statements made or advice given by our sales representatives or applications engineering staff.

The installation recommendation is not subject to any change service! All information is without guarantee.

Latest version of this document available on [www.kraiburg-relastec.com/sportec](http://www.kraiburg-relastec.com/sportec)

page 4 of 4