

Tender Specification

EUROFLEX® playground accessories offer kids everything they need for their naturally active life. Creating imaginative islands and seating arrangements, which promote communication.

Mushrooms



Stepper



Material Stems: bonded rubber granulate
 Colour: red

Dimensions [mm]	Weight [kg/ unit]
200 x 255 x 50 (including socket)	approx. 8,0
300 x 255 x 50 (including socket)	approx. 13,0
400 x 255 x 50 (including socket)	approx. 16,0
500 x 255 x 50 (including socket)	approx. 20,0

Material Cap: EPDM rubber granulate with MDI Polyurethane binder

ATTENTION: the color specification base on RAL and may differ from the product.



All information without guarantee, subject to change. The Tender Specification is not subject to any change service. Each current and valid from can be recalled at www.kraiburg-relastec.com/euroflex



Dimensions [mm]: 150 x 450 (Diameter), Weight [kg/unit]: approx. 13,0

Material Stepper:	bonded rubber granulate
Colour:	red, green, black
Dimensions [mm]	Weight [kg/ unit]
200 x 255 x 50 (including socket)	approx. 8,0
300 x 255 x 50 (including socket)	approx. 13,0
400 x 255 x 50 (including socket)	approx. 16,0
500 x 255 x 50 (including socket)	approx. 20,0

Elephant, Rhino, Dromedary and Pony



All information without guarantee, subject to change. The Tender Specification is not subject to any change service. Each current and valid from can be recalled at www.kraiburg-relastec.com/euroflex



Also available with EPDM rubber mulch

Material: EPDM rubber with polyurethane binding agent

Colour EPDM Mulch: Blend Beige



Dimensions of Elephant [mm]

approx. 560 x 190 x 395

Dimensions of Rhino [mm]

approx. 700 x 250 x 400

Dimensions of Dromedary [mm]

approx. 750 x 200 x 510

Dimensions of Pony [mm]

approx. 580 x 200 x 470

Dimensions of base plate [mm]

Diameter approx. 700

Weight Elephant [kg]:

approx. 30,0

Weight of Rhino [kg]:

approx. 30,0

Weight of Dromedary [kg]:

approx. 32,0

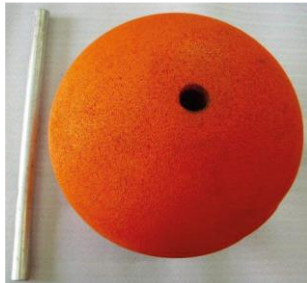
Weight of Pony [kg]

approx. 33,0

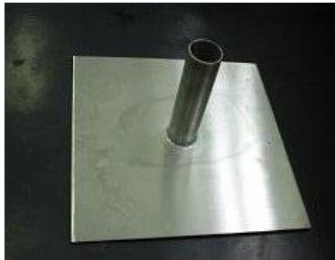
Weight of base plate [kg]

approx. 21,0

Ball and Half ball



Steel anchor D approx. 42,8 mm, L = approx. 750mm



Steel anchor D = 40mm, l = 150mm
Steel base plate: 300 x 300 x 40mm

Material Standard ball:

Colour:

Material Ball, half ball

with EPDM surface:

Colour:

granulated recycled rubber and colored MDI polyurethane
red, green, grey and black

EPDM and SBR rubber with polyurethane binding agent
EPDM Colour Range

Product	Diameter (mm)	Weight (kg)
Standard Ball	345	18,3
	500	56,0
	695	150,4
EPDM Ball	345	20,4
	500	60,0
	695	166,0
Standard half ball	345	9,2
	500	28,0
	695	75,0
EPDM half ball	345	10,2
	500	30,0
	695	83,0

All information without guarantee, subject to change. The Tender Specification is not subject to any change service. Each current and valid from can be recalled at www.kraiburg-relastec.com/euroflex

Cubes

Material

Rubber granulate: granulated recycled rubber (Standard Cubes)
surface EPDM (EPDM Cubes)

Binding agent: MDI polyurethane

Colour: red, green, grey or black (Standard Cubes)
EPDM Topping
minor colour variation possible



EPDM Cubes



L x W x T : 300 x 300 x 300mm

Only available as a standard version in red, green, gray or black!

Dimensional tolerances: +/- 0.8%

Ground anchor: 2 pcs. tube 5/4" (42.4x2mm) 30cm long
(2 holes available for fastening in the base)

Weight: approx. 24kg

Rounded edges

L x W x T: 400 x 400 x 400 mm

Tolerances: +/- 0,8 %

Ground anchor: 2 pcs. tube 5/4" (42.4x2mm) 30cm long
(2 holes available for fastening in the base)

Weight: approx. 50 kg

Rounded edges

All information without guarantee, subject to change. The Tender Specification is not subject to any change service. Each current and valid from can be recalled at www.kraiburg-relastec.com/euroflex

Manufacturer

KRAIBURG Relastec GmbH & Co.KG

Fuchsberger Str. 4, D-29410 Salzwedel

Tel.: +49/8683-701-145, Fax.: +49/8683-701-4-145

EUROFLEX® Playground Accessories are manufactured by an environment-friendly process and can be recycled as raw material at the end of their service life.

Material: granulated recycled rubber and colored MDI polyurethane
Slight material-related colour variations possible.

Conformity acc. to Regulation (EC) 1907/2006 SVHC list and appendix XVII
Production facility inspection

Physical Characteristics:

Chemical resistance: conditionally resistant to acids and bases

Fire resistance: Class E DIN EN 13501-1, 2010

Dimensional tolerances: +/- 0,8 %

Note the complete Installation Instruction.