

### Tender Specification

EUROFLEX® playground accessories offer kids everything they need for their naturally active life. Creating imaginative islands and seating arrangements which promote communication.

#### Mushrooms



#### Stepper with and without design



Material Stems: bonded rubber granulate  
 Colour: red

Dimensions [mm]	Weight [kg/ unit]
200 x 255 x 50 (including socket)	approx. 8,0
300 x 255 x 50 (including socket)	approx. 13,0
400 x 255 x 50 (including socket)	approx. 16,0
500 x 255 x 50 (including socket)	approx. 20,0

Material Cap: EPDM rubber granulate with MDI Polyurethane binder

Dimensions [mm]: 150 x 450 (Diameter), Weight [kg/unit]: approx. 13,0

Material Stepper:	bonded rubber granulate
Colour:	red, green, black
Dimensions [mm]	Weight [kg/ unit]
200 x 255 x 50 (including socket)	approx. 8,0
300 x 255 x 50 (including socket)	approx. 13,0
400 x 255 x 50 (including socket)	approx. 16,0
500 x 255 x 50 (including socket)	approx. 20,0

All information without guarantee, subject to change. The Tender Specification is not subject to any change service. Each current and valid from can be recalled at [www.kraiburg-relastec.com/euroflex](http://www.kraiburg-relastec.com/euroflex)

**Elephant, Rhino, Dromedary and Pony**



Also available with EPDM rubber mulch

Material: EPDM rubber with polyurethane binding agent

Colours for animals and base plate:



Colour EPDM Mulch: Blend Beige

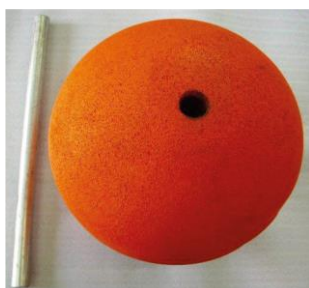


All information without guarantee, subject to change. The Tender Specification is not subject to any change service. Each current and valid from can be recalled at [www.kraiburg-relastec.com/euroflex](http://www.kraiburg-relastec.com/euroflex)

Dimensions of Elephant [mm]  
 approx. 560 x 190 x 395  
 Dimensions of Rhino [mm]  
 approx. 700 x 250 x 400  
 Dimensions of Dromedary [mm]  
 approx. 750 x 200 x 510  
 Dimensions of Pony [mm]  
 approx. 580 x 200 x 470  
 Dimensions of base plate [mm]  
 Diameter approx. 700

Weight Elephant [kg]:  
 approx. 30,0  
 Weight of Rhino [kg]:  
 approx. 30,0  
 Weight of Dromedary [kg]:  
 approx. 32,0  
 Weight of Pony [kg]  
 approx. 33,0  
 Weight of base plate [kg]  
 approx. 21,0

**Ball and Half ball**



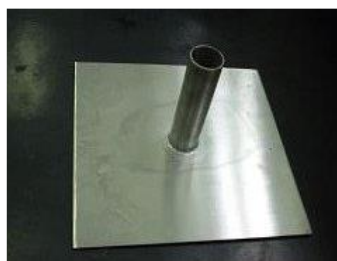
Steel anchor D approx. 42,8 mm, L = approx. 750mm



EPDM standard colours



EPDM special colours



Steel anchor D = 40mm, l = 150mm  
 Steel base plate: 300 x 300 x 40mm

All information without guarantee, subject to change. The Tender Specification is not subject to any change service. Each current and valid from can be recalled at [www.kraiburg-relastec.com/euroflex](http://www.kraiburg-relastec.com/euroflex)

Material Standard ball: granulated recycled rubber and colored MDI polyurethane  
 Colour: red, green, grey and black  
 Material Ball, half ball with EPDM surface: EPDM and SBR rubber with polyurethane binding agent  
 Colour: EPDM Colour Range

Product	Diameter (mm)	Weight (kg)
Standard Ball	345	18,3
	500	56,0
	695	150,4
EPDM Ball	345	20,4
	500	60,0
	695	166,0
Standard half ball	345	9,2
	500	28,0
	695	75,0
EPDM half ball	345	10,2
	500	30,0
	695	83,0

**Cubes**



Material: granulated recycled rubber and MDI polyurethane  
 Colours: red, green, black, grey  
 Dimensions [mm]: 400 x 400 x 400  
 Weight [kg/ unit] approx. 54,0 (61,4 for EPDM)

Length approx. 150mm Diameter

Diameter: approx. 10mm



**Manufacturer**

KRAIBURG Relastec GmbH & Co.KG

Fuchsberger Str. 4, D-29410 Salzwedel

Tel.: +49/8683-701-145, Fax.: +49/8683-701-4-145

EUROFLEX® Playground Accessories are manufactured by an environment-friendly process and can be recycled as raw material at the end of their service life.

Material: granulated recycled rubber and colored MDI polyurethane  
Slight material-related colour variations possible.

Conformity acc. to Regulation (EC) 1907/2006 SVHC list and appendix XVII  
Production facility inspection

**Physical Characteristics:**

Chemical resistance: conditionally resistant to acids and bases  
Fire resistance: Class E DIN EN 13501-1, 2010  
Dimensional tolerances: +/- 0,8 %

Note the complete Installation Instruction.

All information without guarantee, subject to change. The Tender Specification is not subject to any change service. Each current and valid from can be recalled at [www.kraiburg-relastec.com/euroflex](http://www.kraiburg-relastec.com/euroflex)