

» shooting

PROTECTION FOR INDOOR & OUTDOOR SHOOTING RANGES

SPORTEC® SHOOTING PRODUCT RANGE



SPORTEC®

ABOUT KRAIBURG RELASTEC AND SPORTEC®

HIGH-QUALITY PRODUCTS MADE FROM RUBBER GRANULES



KRAIBURG Relastec GmbH & Co. KG is an independent enterprise in the KRAIBURG-Holding (ca. 2400 employees, 540 Mio. € turnover). Every year, approximately 170,000 tons of raw material are processed into high-tech products.

We supply the international market with ready-to-install products for acoustic and vibration insulation (DAMTEC®), impact protection (EUROFLEX®), structural protection and transport protection (KRAITEC®), sports floor coverings and elastic layers (SPORTEC®) as well as flooring systems for horse farms and riding facilities (KOMFORTEX®).

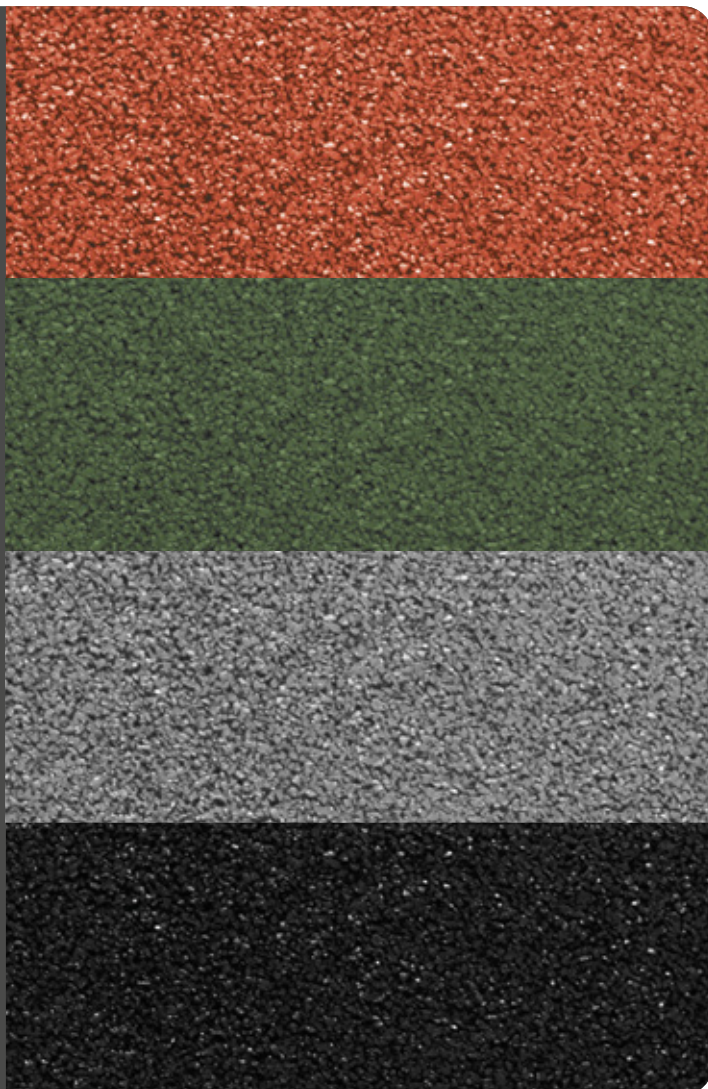


SPORTEC® rubber flooring products and elastic layers from KRAIBURG Relastec GmbH & Co. KG are proven products refined by continuous further development. A wide range of users – including system providers, specialist distributors, architects and builders of sports facilities – benefit from the advantages they provide.

Available in a variety of attractive colours, the SPORTEC® shooting product range allows for personalized floor, wall and ceiling design. The Shooting slabs have been tried and tested by the Beschussamt Munich and can absorb dangerous projectiles and rebounds from pistol and rifle firearms up to 7000 Joules.

Suitable for use indoors and outdoors, at private shooting clubs, military and police installations and security force training grounds, the SPORTEC® shooting product range also has a flooring option with Bfl-s1 fire classification. This seamless surface solution enables the floor to resist any gunpowder residues and makes the floor lead dust protected, helping to keep a potentially dangerous environment extremely well protected.

The material's remarkable elasticity makes bullet holes practically invisible after absorption and also helps contribute to a quieter environment by damping noise and absorbing muzzle blast waves in the firing range. Equally, its robustness makes SPORTEC® shooting the ideal long-term solution.





» **MORE FROM YOUR FLOOR**

- » more prevention of bullet ricochet from walls, ceiling and floor
- » more safety due to fire resistant system
- » more protection from muzzle blast and noise
- » more easy cleaning of potentially hazardous residues
- » more resistance & long-term durability



SPORTEC® shooting & shooting pro

SAFETY AND PROTECTION FOR SHOOTING RANGES



When using SPORTEC® shooting as floor covering, we recommend a polyurethane coated sealing after installation. In this case, SPORTEC® shooting can meet the requirements of fire resistance class B_{fl}-s1 (according to EN 13501-1).

»MORE FROM YOUR FLOOR

- prevention of bullet rebound from walls, ceiling and floor
- absorption of projectile ricochets
- rubber slabs with integrated connector pins
- certified by Beschussamt München
(Shooting: B-31/2009, Shooting pro: 15M066A01)
- resistant, durable and abrasion resistant surface
- easy installation also on walls

Applications



Material	Recycling tyre rubber granules bonded with polyurethane elastomer
Thickness	40 mm (shooting), 45 mm (shooting pro) (± 2 mm)
Dimensions	500 x 500 mm / 1,000 x 500 mm (± 0.8 %)
Colours	red (black, grey and green on request)
Area weight	ca. 27 kg/m ² (shooting), ca. 39.2 kg/m ² (shooting pro)
Tensile strength	min. 0.75 N/mm ² (shooting) min. 1.84 N/mm ² (shooting pro) (EN ISO 1798)
Elongation at break	min. 50% (shooting), min. 101% (shooting pro) (EN ISO 1798)
Temperature range	- 30°C to + 80 °C
Fire resistance	E _{fl} (B2) (DIN EN 13501-1); B _{fl} -s1 (B1) (DIN EN 13501-1)



SPORTEC® SFR

PU COATING FOR SHOOTING RANGE FLOORING

SPORTEC® SFR is a PU based coating which is applied on top of SPORTEC® shooting or SPORTEC® shooting pro slabs in order to create a safe, seamless and fireproof surface for shooting ranges. This flooring system provides the best possible prevention of bullet rebound or ricochet from floors whilst also enabling any gunpowder residues to be removed easily from the surface without any risk of it burning or causing damage. SPORTEC® SFR comes with a superior fire resistance class of Bfl-s1, fulfilling German technical approval conditions and is available in 6 different colours so it can suit any design of shooting range, whether military or police ranges, security force training areas or private clubs. The SPORTEC® SFR system perfectly complements the rest of the SPORTEC® shooting product range which includes anti-ricochet tiles for walls and ceilings and bullet trap rubber blocks.

3rd layer: SPORTEC® SFR finisher

3

Available colours



RAL 7005 RAL 7035 RAL 6011 RAL 6021 RAL 5009 RAL 5014

2nd layer: SPORTEC® SFR protector

2

1st layer: SPORTEC® SFR sealer

1

SPORTEC® shooting tile

Material	Colored, two-component polyurethane coating
Consumption	approx. 150 g/m ² by applying on SPORTEC® SFR protector
Recoatable (20 °C)	after approx. 16 hours and a maximum within 48h
Packaging	Set of 10 kg: mixing ratio of Resin Base : Hardener = 825 : 175
Material	Solvent-free, two-component polyurethane coating
Consumption	approx. 2600 g/m ² by applying on SPORTEC® SFR sealer
Recoatable (20 °C)	after approx. 16 hours and a maximum within 48h
Packaging	Set of 25 kg: mixing ratio of Resin Base : Hardener = 760 : 240
Material	Solvent-free two-component polyurethane pore-sealer
Consumption	approx. 1200 g/m ² (shooting) or approx. 800 g/m ² (shooting pro)
Recoatable (20 °C)	after approx. 16 hours and a maximum within 48h
Packaging	Set of 25 kg: mixing ratio of Resin Base : Hardener = 800 : 200

see page 4



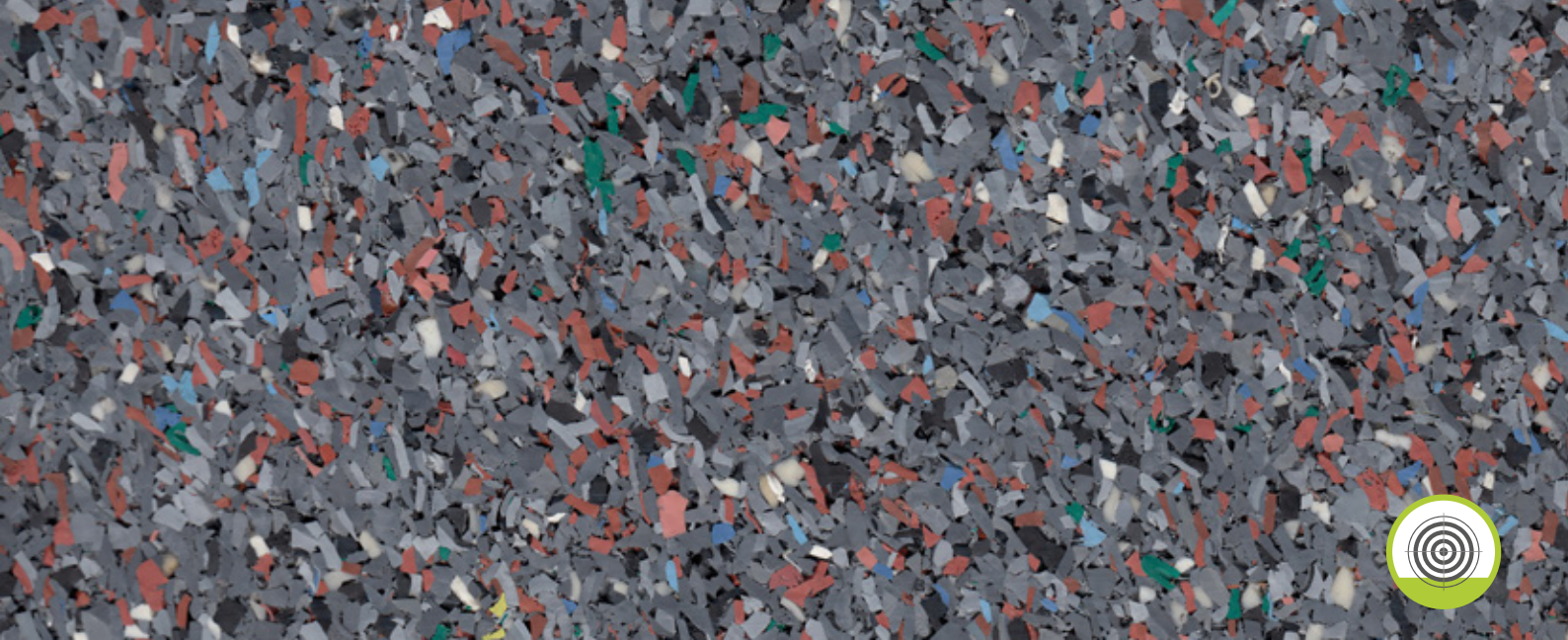
SPORTEC® shooting blocks

PROJECTILE ABSORBING MATERIALS

Specifically designed as a projectile-absorbing surfacing material, SPORTEC® shooting blocks provides protection at targets of indoor shooting ranges and nearby outdoor facilities. SPORTEC® shooting blocks reliably absorbs dangerous ricochets and rebounds.



	SPORTEC® shooting block	SPORTEC® shooting cube	SPORTEC® shooting step block
Material	Recycling tyre rubber granules bonded with polyurethane elastomer		
Colour	red (black and green available on request)		
Fire resistance	E _{fl} (B2) (DIN EN 13501-1)		
Temperature range	- 30°C to + 80 °C		
Dimensions (Length x width x height)	500 x 300 x 200 mm (± 0.8 %) 250 x 300 x 200 mm (± 0.8 %)	400 x 400 x 400 mm (± 0.8 %)	1,000 x 300 x 150 mm (± 0.8 %) 1,000 x 240 x 120 mm (± 0.8 %)
Weight	ca. 25.5 kg (500 x 300 x 200 mm) ca. 12.75 kg (250 x 300 x 200 mm)	ca. 50.0 kg	ca. 33.0 kg (1,000 x 300 x 150 mm) ca. 29.0 kg (1,000 x 240 x 120 mm)



SPORTEC® fragmentation rubber sheets

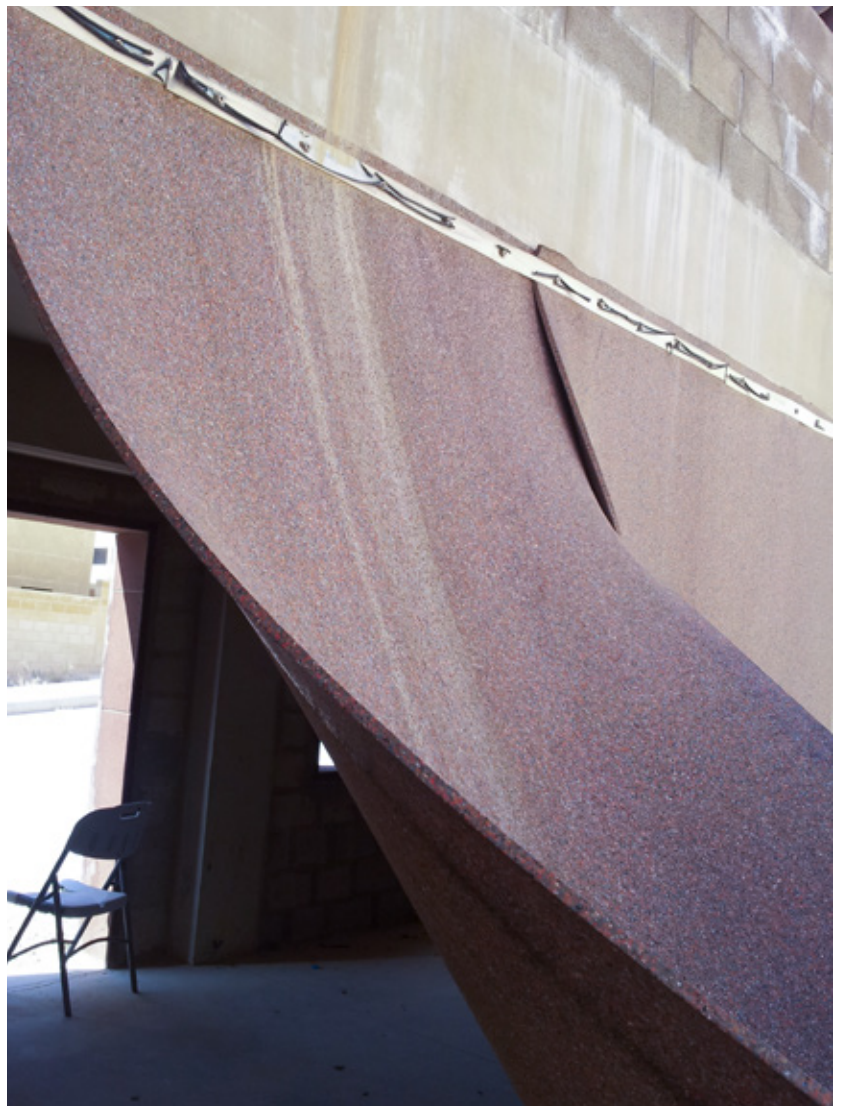
PROTECTIVE CURTAIN TO STOP STRAY BULLET FRAGMENTS

SPORTEC® fragmentation rubber sheets are used as bullet catch curtains in shooting ranges to absorb ricochets or bullet parts. They are delivered in rolls and can be cut to size on site so that they fit all types of shooting ranges and tactical courses both indoor and outdoor.

» **MORE FROM YOUR FLOOR**

- Protection against ricochets and rebounds wherever there are no walls for mounting SPORTEC® shooting panels
- Projectiles are absorbed
- Easy to cut to size

Material	high-grade recycled rubber granules, PU-elastomer bonded
Thickness	8, 9, 10 mm (± 0.3 mm)
Roll width	1,500 mm (± 1.5 % mm)
Roll length	Length [m] (± 1.5 %) / thickness [mm]: 40/8, 35/9, 32/10
Colour	multi-coloured
Tensile strength	ca. 0.8 N/mm ² (EN ISO 1798)
Elongation at break	ca. 125% (EN ISO 1798)





General installation instructions

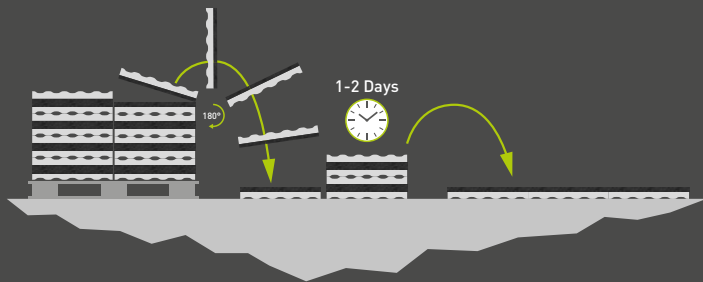
Required tools

gloves, measuring tape, cutter, chalk line, jigsaw and rubber hammer for tiles, pressure roller for rolls



Acclimatisation

The floor covering should be unstacked from the pallet before laying and stored 1-2 days where it will be laid.

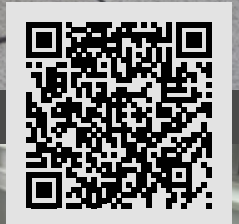


Adhesive (700 g/m²), varnish (100 ml/m²), cleaner (40 ml/m²)
Please add the required quantity to your order.

Detailed installation instructions for each product

www.kraiburg-relastec.com/sportec/en/downloads

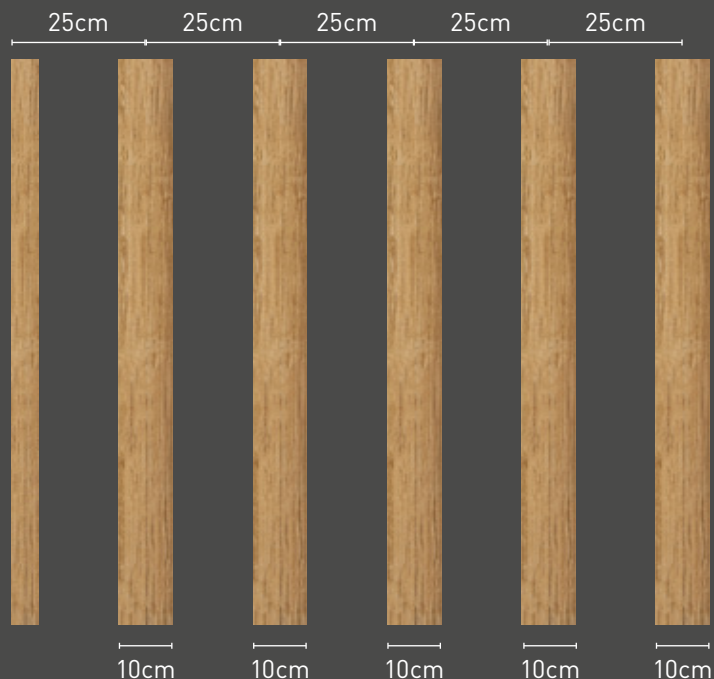
Installation videos on YouTube



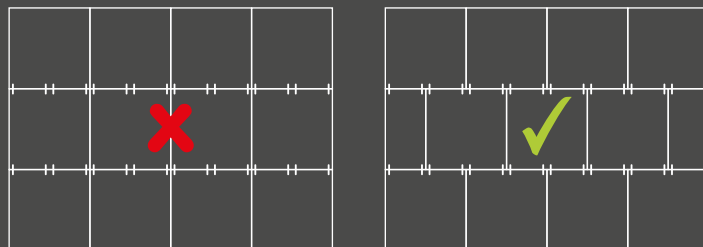


Installation of SPORTEC® tiles on walls

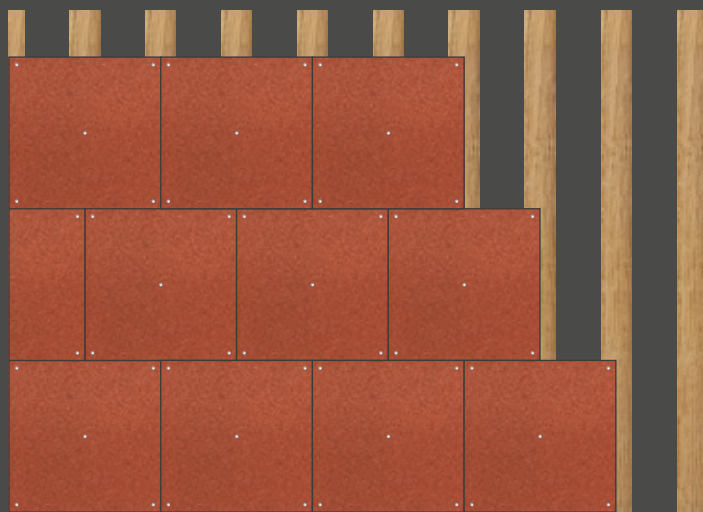
For installation, fasten wooden slats (approx. 10cm width) with dowel and screw by that way that it carries the weight of the tiles. Fit the wooden slats regular in a distance of 25cm to each other on the wall.



Our tiles are designed for installation without glue and should be installed in T-joints to the wooden slats. The tiles are connected to each other using the pre-installed connectors and fastened to the wooden battens with screws. All tiles can be cut to size with a jigsaw, industrial cutter or table saw.



To fix the tiles to the wooden slats, screws are screwed at a distance of approx. 3cm from the corner of the tile and in such a way that the screw screws into the wooden slat, the screw head disappears into the tile and the tile is pressed against the wooden slat. In addition, a screw is used in the middle of the panel. For a 1,000 mm wide panel, eight screws are to be used.



More details can be found in the SPORTEC® shooting installation instructions.



www.kraiburg-relastec.com/sportec/en/city



www.kraiburg-relastec.com/sportec/en/applications

In SPORTEC® City you will find an overview of the most important SPORTEC® applications in daily life. You are not into visuals? Of course you will also find a more compact overview of all applications on our website. On the application pages we present detailed information, advantages, suitable products and reference projects.

ENVIRONMENTAL MANAGEMENT AT KRAIBURG RELASTEC

FROM OLD TYRES TO TOP-QUALITY FINISHED PRODUCTS



Recycling of 85.000t old tyres

Every year, we process and recycle about 85,000 tons of old tyres, closed-cell rubber and rubber production scrap.



Fully recyclable products

All products are fully recyclable and are returned to the production process without any loss of quality.



CO₂ savings

In Germany alone, 400,000 tonnes of CO₂ can be saved annually by using used tyre granulates instead of new rubber materials.



Environmentally friendly production

We invest in innovative and environmentally friendly production methods and technologies. There is a PV system on our administration building.



Control of suppliers

Our suppliers are subject to constant monitoring with regard to environmental protection.



Environmentally friendly way of working

All employees of KRAIBURG Relastec undertake to implement sustainable practices in their daily work and to protect the environment wherever they can.



Review of the products and further development

Our products are subject to continuous quality testing and further development, whereby environmental concerns are given priority. We are always on the lookout for even more environmentally friendly alternatives that enable us to further reduce emissions and protect resources.



Environmental protection as a main strategic task

We are convinced that sustainable growth is only achievable, if we meet our responsibilities towards the environment. KRAIBURG Relastec has therefore adopted a very simple policy: Protecting the environment is part and parcel of what we do every day!



Member of NEW LIFE initiative

The declared aim of NEW LIFE is to demonstrate the advantages of recycled products from End-of-Life Tires (ELT) to the media, politicians and the general public and to motivate them to act sustainably.

Mehr Infos finden Sie auf www.initiative-new-life.de/en

» **MORE FROM YOUR FLOOR**



Sports flooring and elastic layers
made from rubber granules

KRAIBURG Relastec GmbH & Co.KG
Fuchsberger Straße 4 · D-29410 Salzwedel

Sales International:
Tel. +49 (0) 8683 701 -340
Fax +49 (0) 8683 701 -4340
sportec@kraiburg-relastec.com
www.sportec-flooring.com

No liability accepted for errors or omissions. Subject to changes without prior notice.
© KRAIBURG Relastec GmbH & Co. KG 2021

