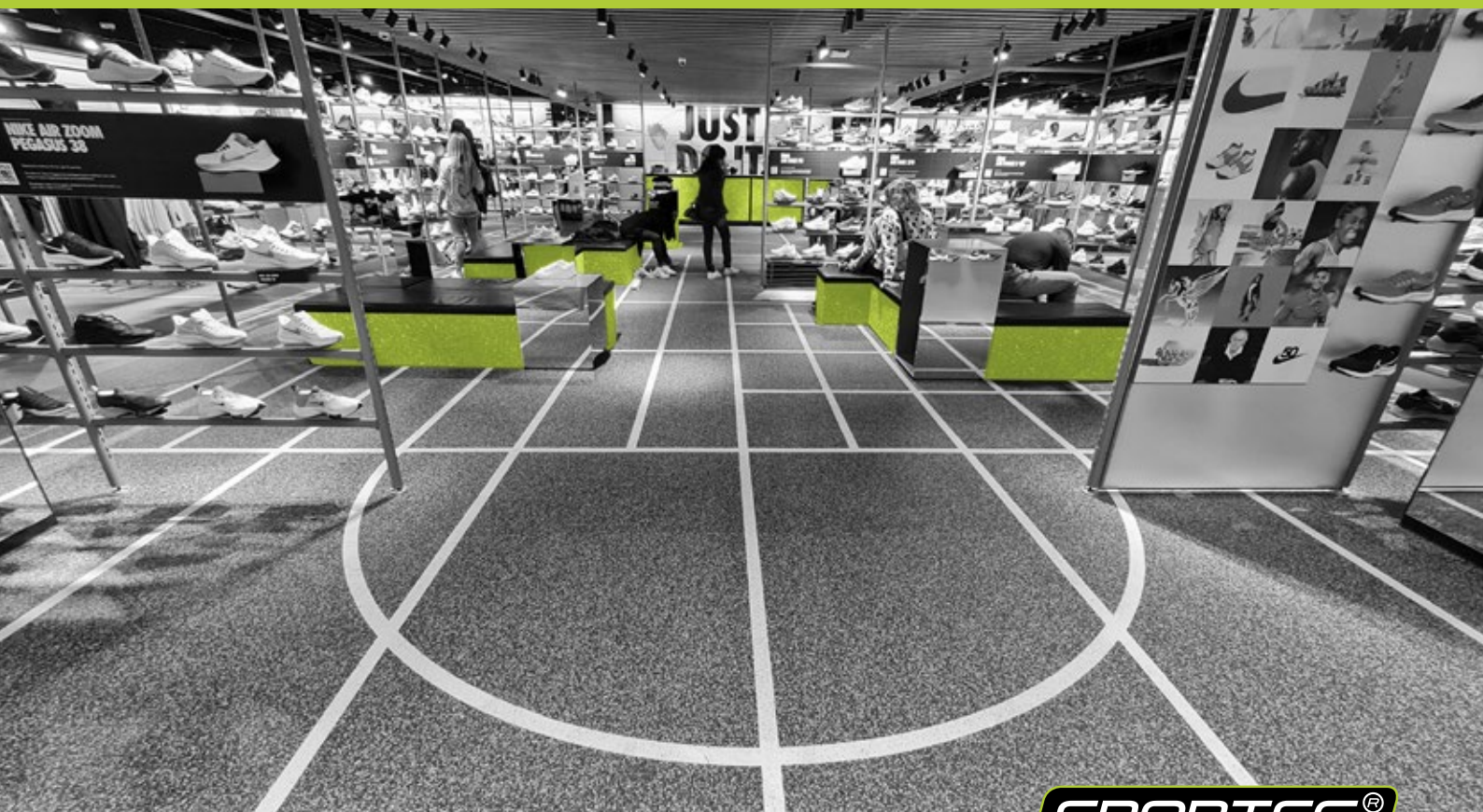


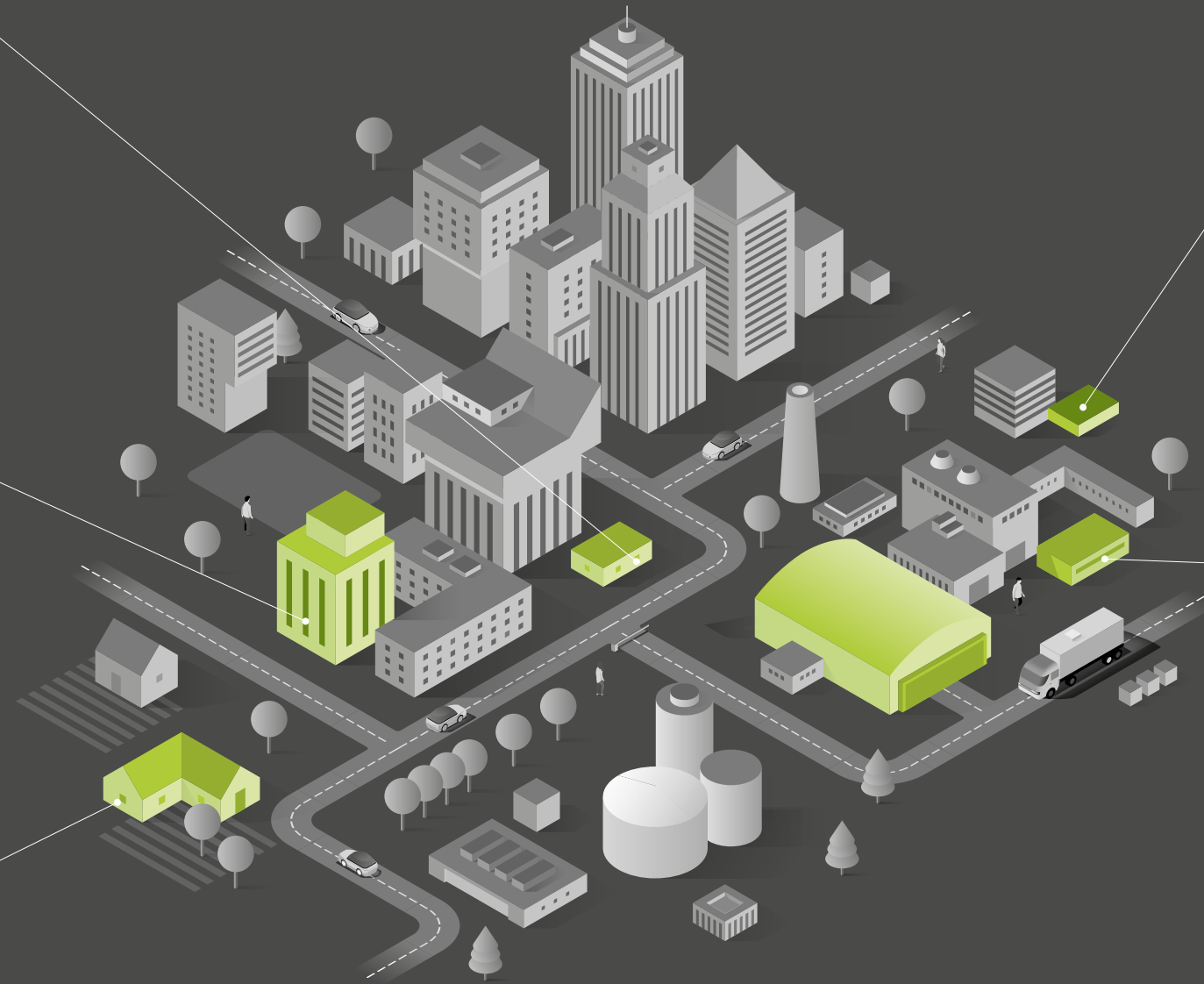
# » commercial

## COMMERCIAL FLOORING

FOR RETAIL, OFFICES, SCHOOLS, EVENTS & MORE

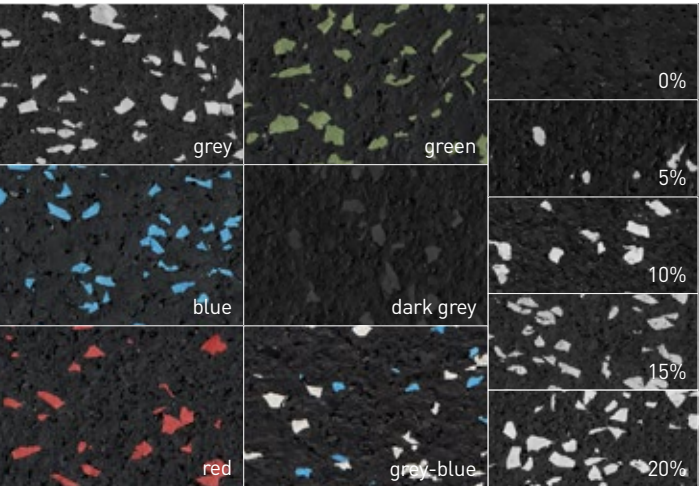


**SPORTEC®**

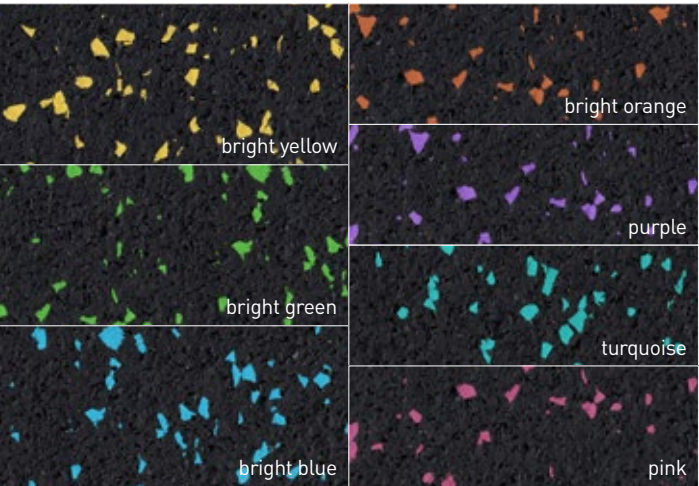




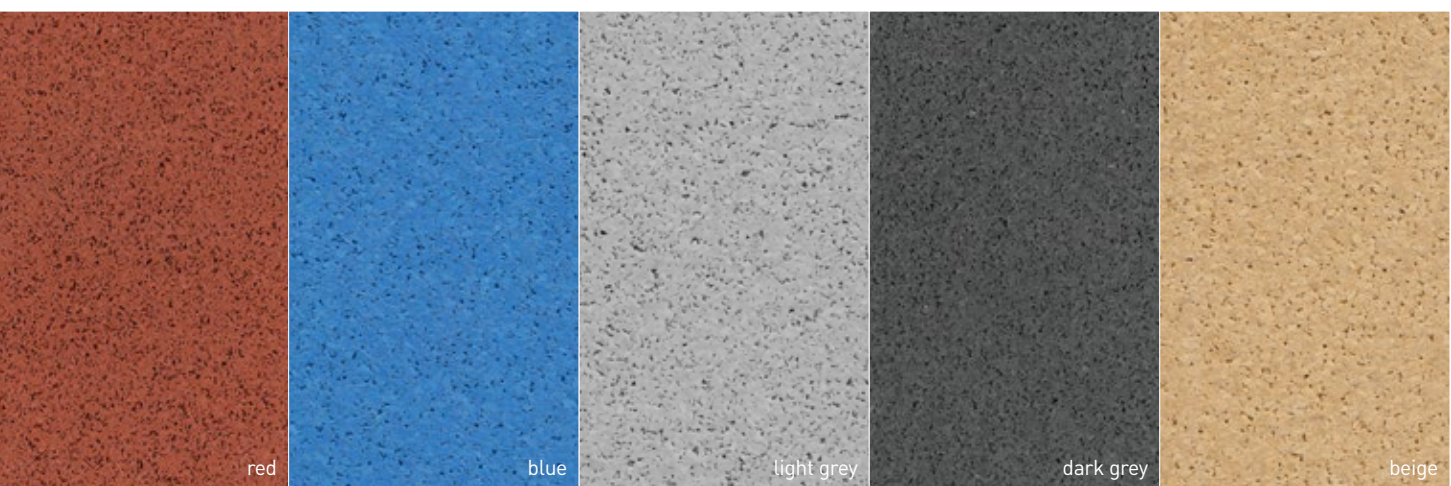
»SPORTEC® color



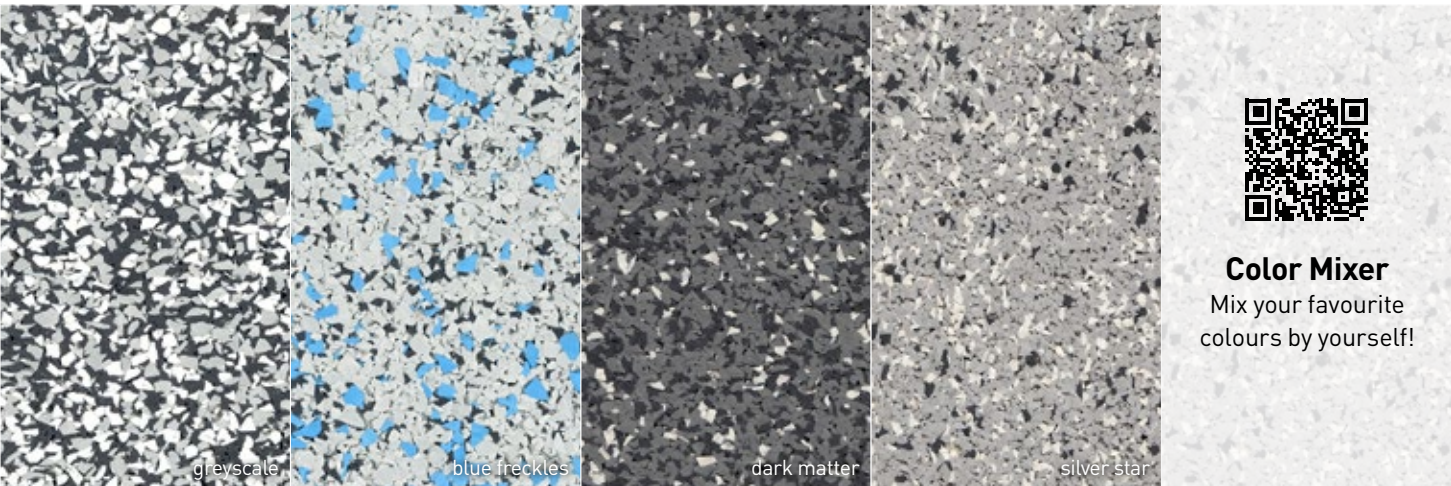
»SPORTEC® neon



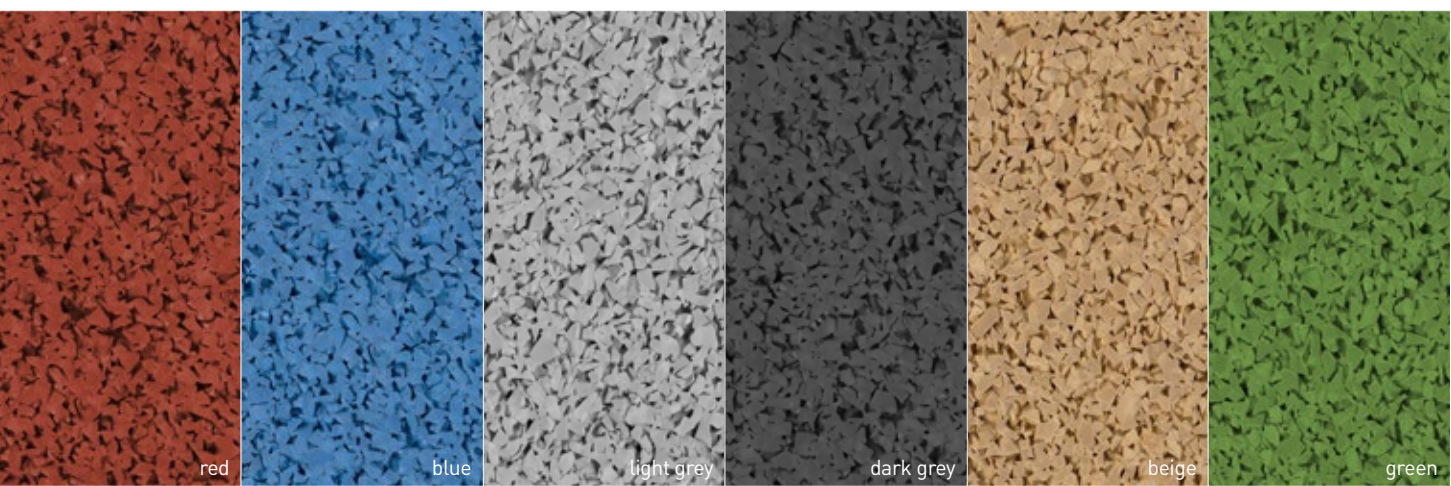
»SPORTEC® UNI classic



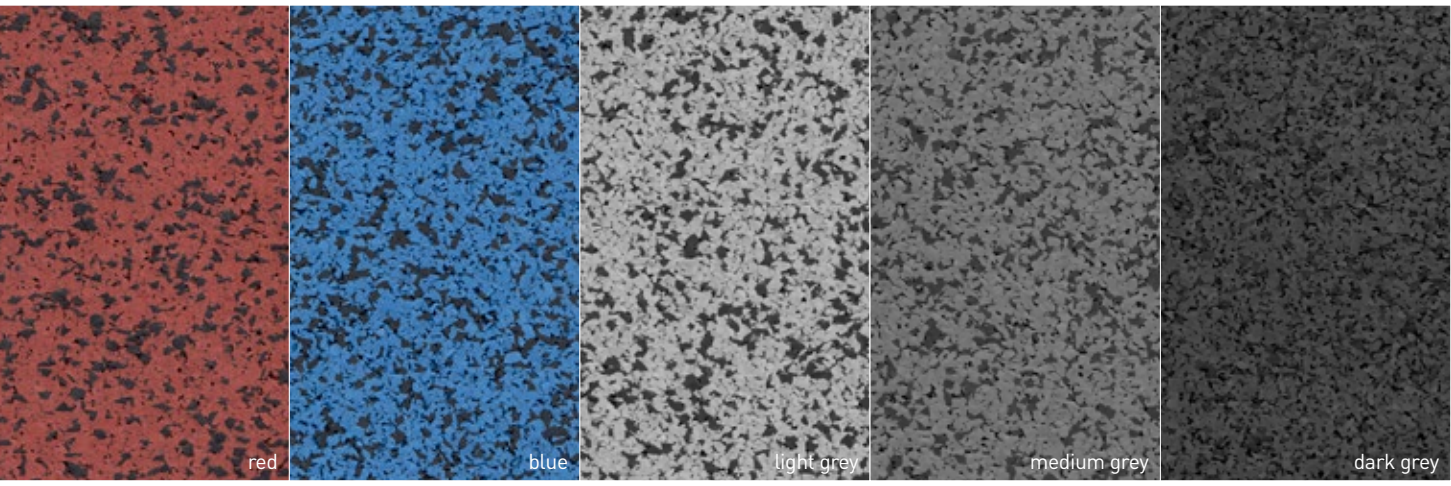
»SPORTEC® variant



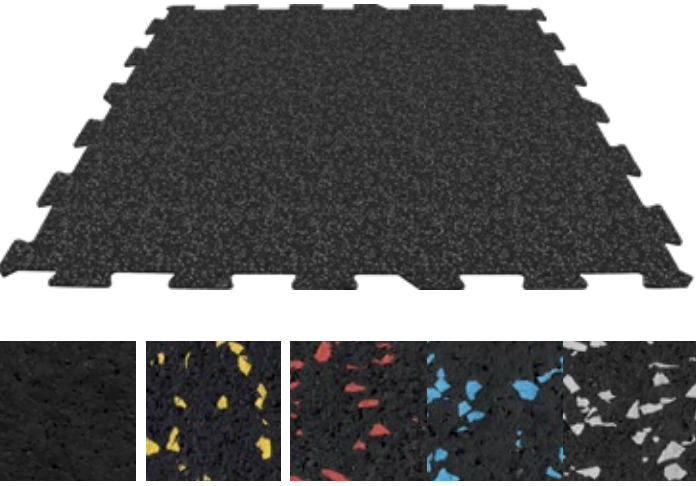
»SPORTEC® UNI versa



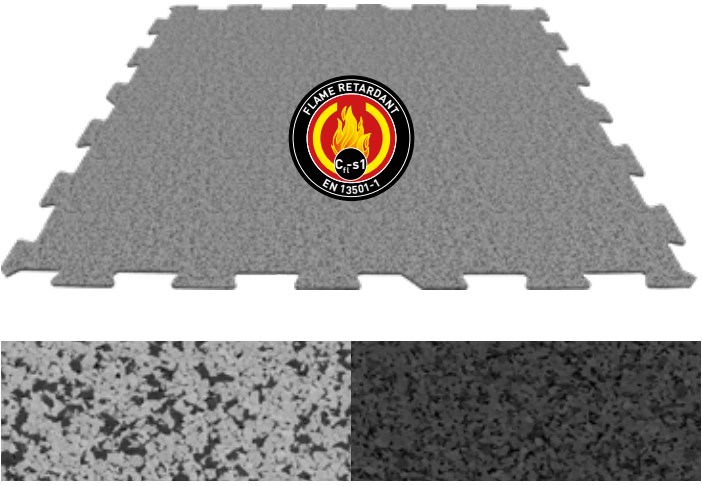
»SPORTEC® purcolor



»SPORTEC® puzzle 2.0 color/neon



»SPORTEC® puzzle 2.0 purcolor





# » RETAIL



**WALKING COMFORT. RESILIENT.**  
**EASY CLEANING.**

## Shopping experiences made to fit.

Our SPORTEC® floor coverings are perfect for highly frequented shops due to their combination of comfort and robustness, slip resistance and fire protection. Extraordinary shopping experiences can be created thanks to the wide range of designs and colour combination options. With SPORTEC® variant, for example, you can create your own colour mix adapted to your corporate design colours, which makes a significant contribution to conveying your brand message to the customer. For temporary pop-up stores, SPORTEC® floor coverings can also be bonded with double-sided industrial adhesive tape so that the floor can be reused later - all in the spirit of sustainability.

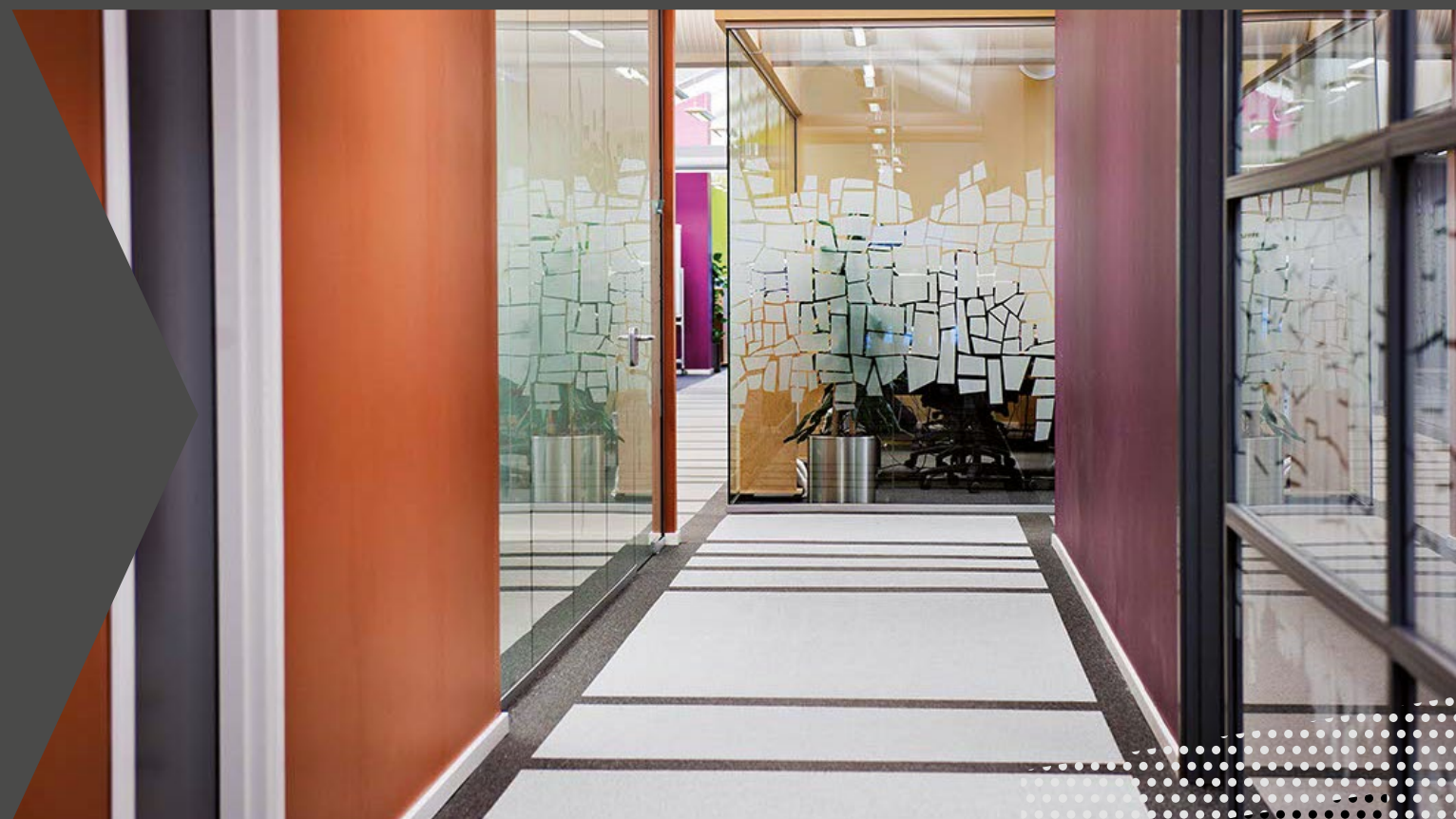








# » OFFICES



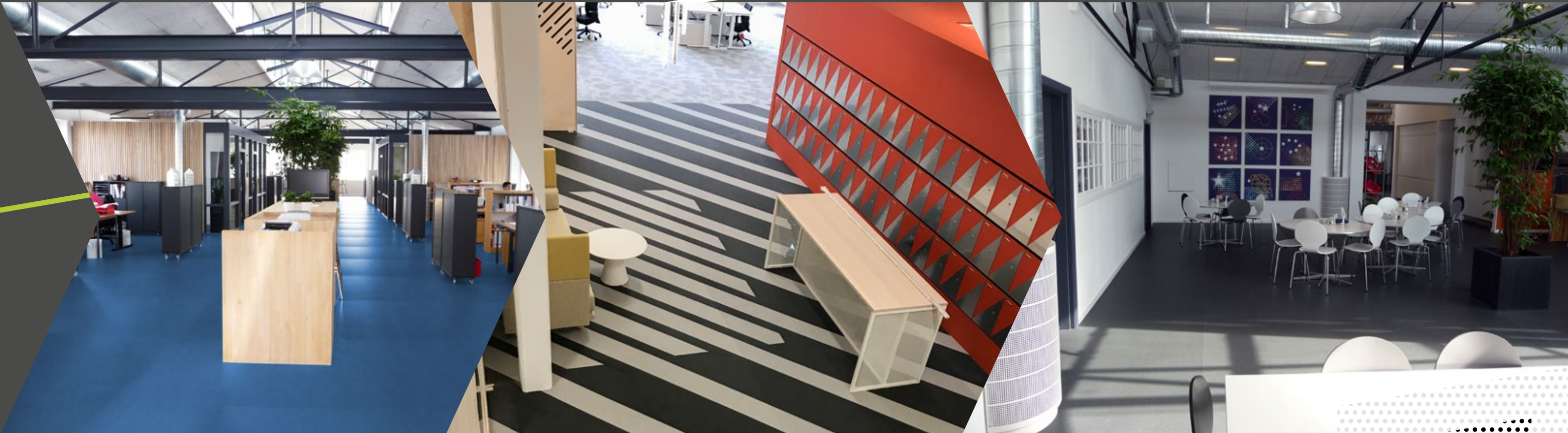
**NOISE REDUCTION. INNOVATIVE.**  
**FIRE-RESISTANT.**

## Modern design meets improved working atmosphere.

Our SPORTEC® floor coverings also cut a fine figure in offices. In particular, the excellent impact sound insulation reduces the noise level in corridors and offices and promotes a healthier working environment. A variety of modern designs combined with its elasticity stimulate creativity and ensure a greater sense of well-being and comfort at work. High fire protection and slip resistance classes round off the requirements profile.









# » EDUCATION



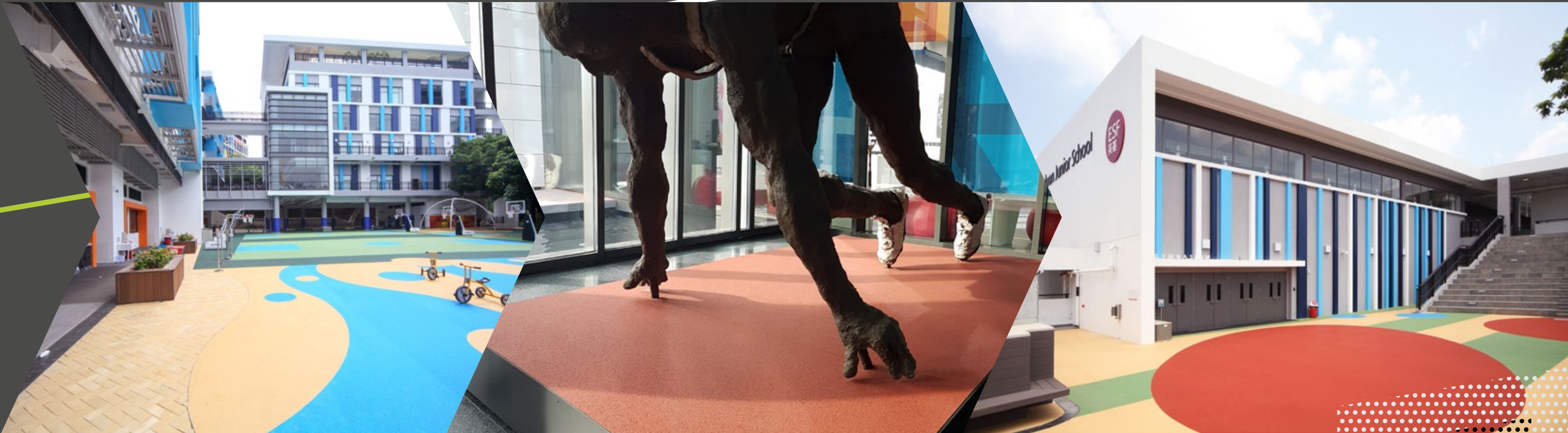
**LOW NOISE. SLIP RESISTANT.**  
**COLOURFUL DESIGN OPTIONS.**

## **Schools. Kindergartens. Museums.**

A floor that reduces impact sound and is slip-resistant is the primary importance for schools, kindergartens or even museums to ensure peace and quiet and prevent injuries. Walkways or play areas can be created by using different shapes or motifs with colourful designs, bringing life and animation to your learning and recreation areas.









# »EVENTS



**EASY MAINTENANCE. RE-USABLE.**  
**CORPORATE DESIGN OPTION.**

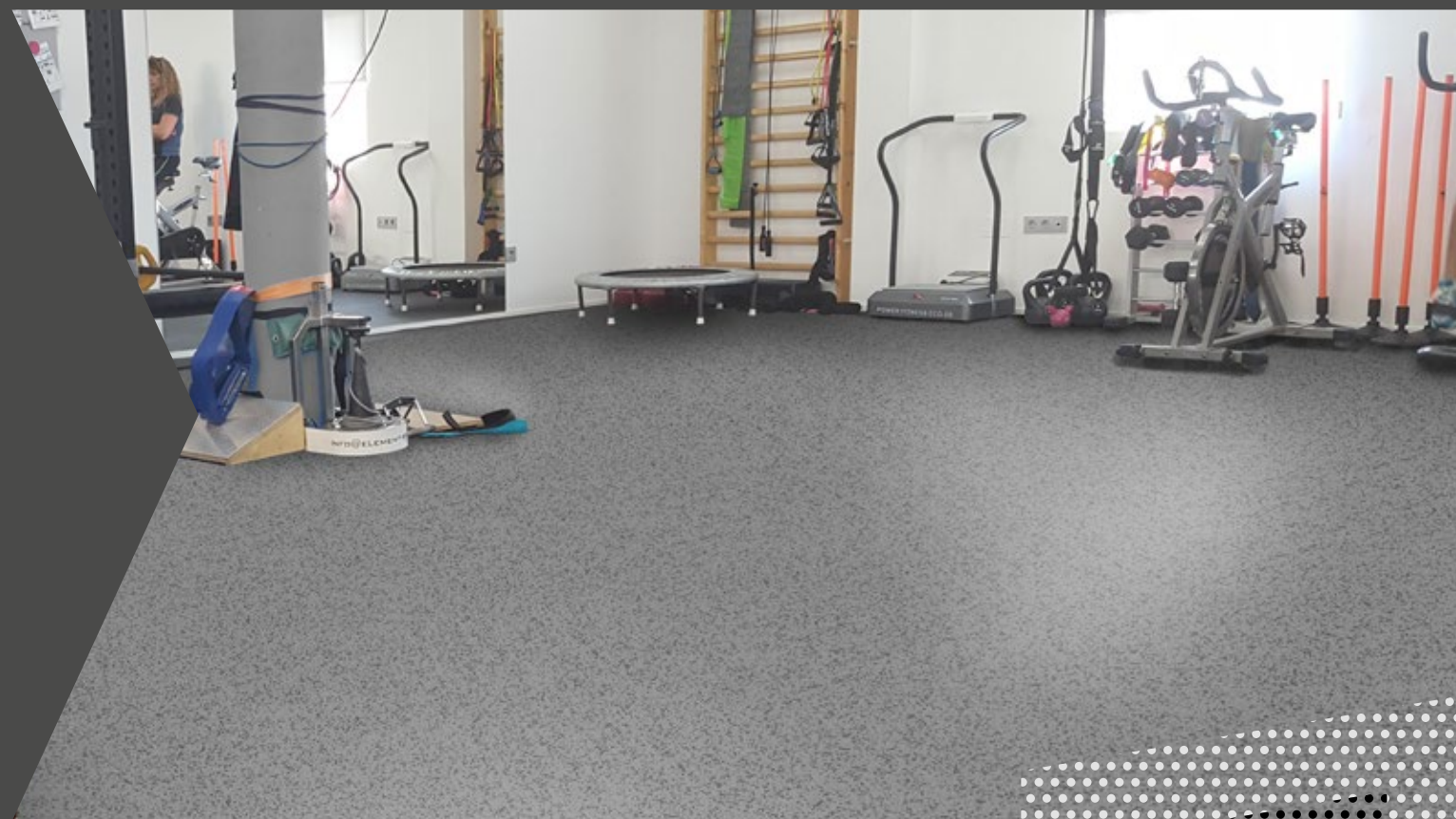
## Exhibitions & Events.

Only SPORTEC® floor coverings make exhibition stands a real highlight. On the one hand, modern designs or custom colour mixes for exhibition stands can be realised to match the corporate design. On the other hand, the elasticity and pleasant walking sensation gives stand visitors a positive „wow effect“ when they step on the floor for the first time.





# » REHABILITATION



**COMFORTABLE. SAFE.**  
**IDEAL FOR PHYSICAL EXERCISE.**

## For the fastest possible recovery.

Whether you need a floor covering for the entrance area, for corridors or for treatment rooms, SPORTEC® offers suitable solutions for all areas in rehabilitation centres. The floors' elasticity is particularly important, giving ergonomic comfort that provides a pleasant walking feeling, whilst high slip resistance enables people with limited motor abilities to walk safely and reduce stress on their joints.





# INSTALLATION » ACCESSORIES



**GLUEING.** **SEALING.**  
**CLEANING.**

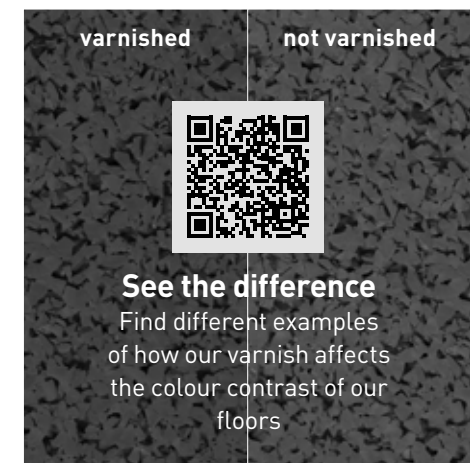
## SPORTEC® varnish. cleaner. adhesive.

These products perfectly complement our SPORTEC® floor coverings. Our PU adhesive bonds the rolls to the sub-base to create a permanently fixed, yet elastic, floor. The varnish protects the colours and makes cleaning a lot easier and our cleaner helps to remove even the most stubborn dirt from the floor.

## » SPORTEC® Varnish RZ TURBO PROTECT ZERO



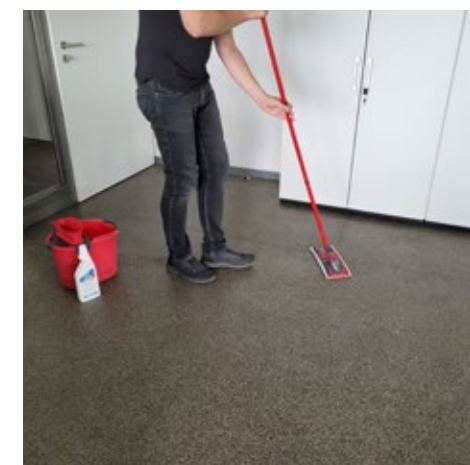
Packsize	4.5 l + 495 ml hardener
Pot life (20°C)	120 Min. (20 °C / 60 % relat. LF)
Ready for foot traffic (20°C)	after approx. overnight drying
Completely cured (20°C)	after approx. 7 days



## » SPORTEC® Cleaner RZ INTENSIVE CLEANER



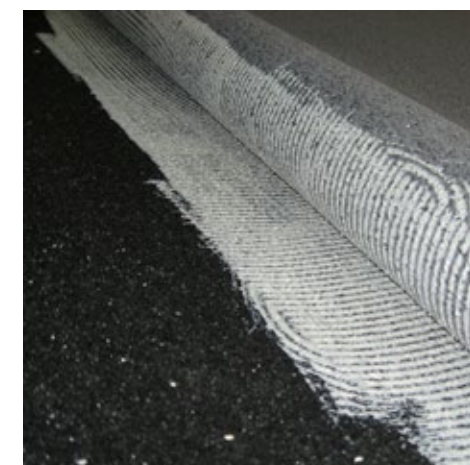
Packsize	750 ml or 5 l
Working temperature	18 - 25 °C
Area	10 l: 250 m²



## » Adhesive SPORTEC® 700



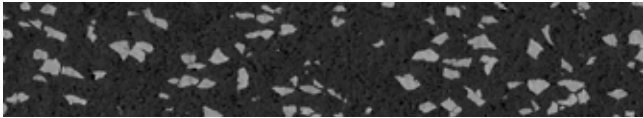
Packaging	Set of 10, 25 or 28 kg (mixing ratio Base : Curing Agent = 850 : 150)
Pot life (20°C)	approx. 30-60 minutes
Ready for foot traffic (20°C)	after approx. 8 hours
Completely cured (20°C)	after approx. 36 hours





Technical Data

SPORTEC® color

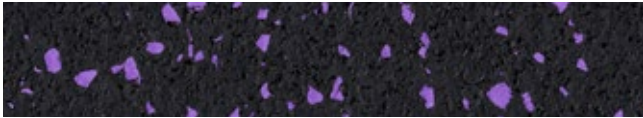


**Material** fine-grain recycled rubber tyre granules (black) with 5, 10, 15, 20 % EPDM colour granules, PU-elastomer bonded

**Dimensions** **Roll width:** 1,500 mm  
**Roll length** Length m/Thickness mm:  
30/4, 20/6, 15/8, 12/10

**Thicknesses** **color 0:** 4, 6, 8, 10 mm\*  
**color 5, 10, 20:** 6 mm\*  
**color 15:** 4, 6, 8, 10 mm  
(\*other thicknesses available on request)

SPORTEC® neon



**Material** fine-grain recycled rubber tyre granules (black) with EPDM colour granules, PU-elastomer bonded

**Dimensions** **Roll width:** 1,500 mm  
**Roll length** Length m/Thickness mm:  
30/4, 20/6, 15/8

**Thicknesses** 4, 6, 8 mm (other thicknesses available on request)

SPORTEC® puzzle 2.0 color/neon



**Material** SPORTEC® color / SPORTEC® neon

**Dimensions** 1,030 mm / 1,030 mm  
Covering dimensions: 1,000 x 1,000 mm

**Thicknesses** 6, 8, 10 mm

SPORTEC® puzzle 2.0 purcolor



**Material** SPORTEC® purcolor

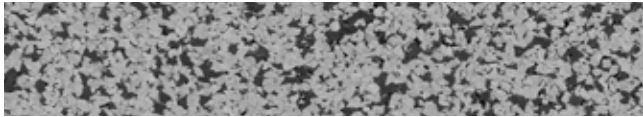
**Dimensions** 1,030 mm / 1,030 mm  
Covering dimensions: 1,000 x 1,000 mm

**Thicknesses** 6, 8, 10 mm

More technical data:

visit [www.kraiburg-relastec.com/sportec/en](http://www.kraiburg-relastec.com/sportec/en)

SPORTEC® purcolor

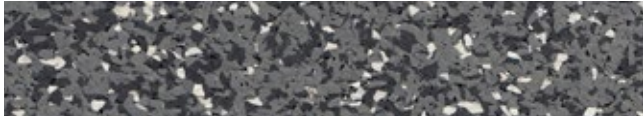


**Material** 100 % EPDM granules  
PU-elastomer bonded

**Dimensions** **Roll width:** 1,250 mm  
**Roll length** Length m/Thickness mm:  
30/4, 20/6, 15/8

**Thicknesses** 4, 6, 8 mm (other thicknesses available on request)

SPORTEC® variant



**Material** EPDM colour combinations, PU-elastomer bonded

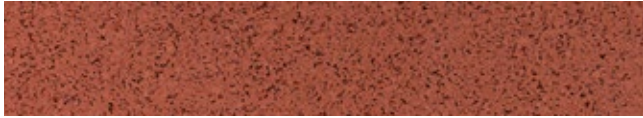
**Dimensions** **Roll width:** 1,250 mm  
**Roll length** Length m/Thickness mm:  
30/4, 20/6

**Thicknesses** 4 or 6 mm (other thicknesses available on request)

EPDM colour range



SPORTEC® UNI classic

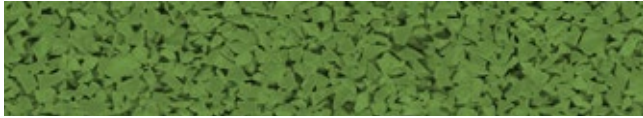


**Material** fine-grain EPDM granules, PU-elastomer bonded

**Dimensions** **Roll width:** 1,250 mm  
**Roll length:** 15 m

**Thicknesses** 4 mm (other thicknesses available on request)

SPORTEC® UNI versa



**Material** Coarse-grained coloured EPDM granules bonded with polyurethane elastomer

**Dimensions** **Roll width:** 1,250 mm  
**Roll length:** 4 mm (other roll lengths available on request)

**Thicknesses** 4 mm (other thicknesses available on request)

Other SPORTEC® brochures



Fitness

Gymcoustic

Sports flooring

Elastic layers

Shooting

Winter sports





## General installation instructions

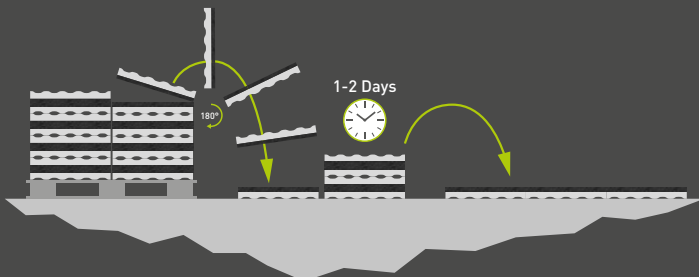
### Required tools

gloves, measuring tape, cutter, chalk line, jigsaw and rubber hammer for tiles, pressure roller for rolls



### Acclimatisation

The floor covering should be unstacked from the pallet before laying and stored 1-2 days where it will be laid.



**Adhesive (700 g/m<sup>2</sup>), varnish (100 ml/m<sup>2</sup>), cleaner (40 ml/m<sup>2</sup>)**

Please add the required quantity to your order.

### Detailed installation instructions for each product

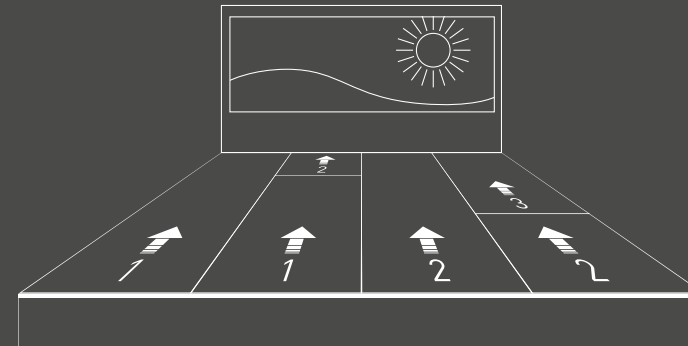
[www.kraiburg-relastec.com/sportec/en/downloads](http://www.kraiburg-relastec.com/sportec/en/downloads)

### Installation videos on YouTube

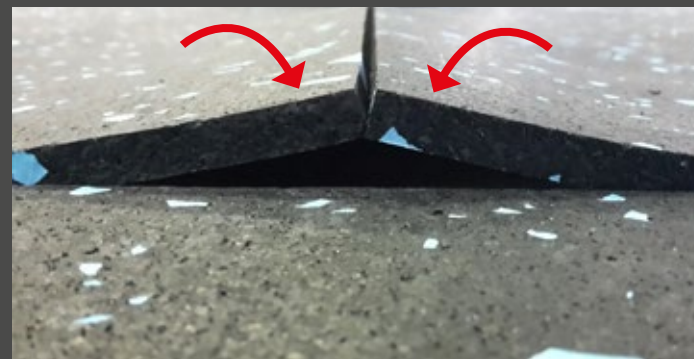


## Installation of rolls

SPORTEC® rolls should always be aligned in the same direction towards the brightest part of the room.



SPORTEC® rolls should be laid with pressure on the butted joints (close to overlapping). No welding or joint filler is required.



SPORTEC® rolls should be completely glued to the floor. Thicker rolls (from 10 mm thickness) can be fixed with industrial double-sided adhesive tape.



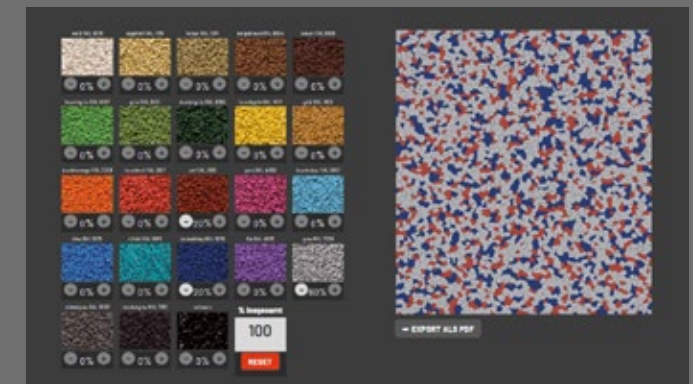
## SPORTEC® website - tools



[www.kraiburg-relastec.com/sportec/en/room-designer](http://www.kraiburg-relastec.com/sportec/en/room-designer)

Plan your room with the colour of your choice!

Select the photo that best suits your application and change the colours of the SPORTEC® product in the picture.



[www.kraiburg-relastec.com/sportec/en/color-mixer](http://www.kraiburg-relastec.com/sportec/en/color-mixer)

Create your own SPORTEC® variant floor covering. Choose up to 5 different colours from our EPDM colour palette and adapt the design to your wishes.



[www.kraiburg-relastec.com/sportec/en/puzzle-2-0-designer](http://www.kraiburg-relastec.com/sportec/en/puzzle-2-0-designer)

Lay out your room with puzzle mats and plan the colours exactly with our SPORTEC® puzzle Designer! Choose from 3 different presets (plain surface, chequered pattern, stripes) and adjust your surface exactly according to your wishes. Export the surface as PDF and start a non-binding price inquiry.



Relastec.de 5G

100%

SPORTEC® Support Chat

SPORTEC® Team, You

Why should I use rubber floors in my shop, office or school? 🧐

Rubber floors stand out from other floor coverings. Not only are they elastic, soft and very robust, they are also non-slip, ergonomic and help reduce noise. They are perfect for work premises and are environmentally friendly.



How thick does the rubber floor have to be? 📏

For classic use as a floor covering 4mm is sufficient, with 6 and 8mm also available for extra comfort or high frequency use. Our SPORTEC® fusion classic (8mm) is ideal for decorative tracks.

Do I need to varnish the floor? ✨

Since the area is likely to be highly frequented, using a varnish makes absolute sense, making cleaning a lot easier. The only exception would be if the floor were to be subject to high punctual loads such as high heels or heavy trolleys.



Can I repair a damaged varnished area?

Small damaged areas can be repaired with the RZ Refresher Set. For larger areas you have to remove the old varnish and then reseal.



The building is only rented but I want to have a short-term SALE presentation area, do I have to glue the rubber floor?

For temporary applications you can either use SPORTEC® Puzzle 2.0, or you should fix roll materials to the floor with double-sided tape.

I have floor heating. Can I install a rubber floor on it?

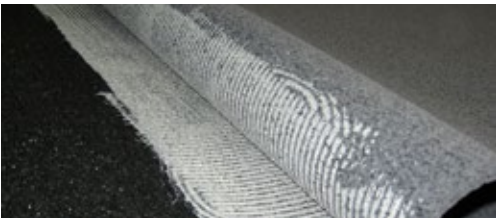
You can use our roll materials such as SPORTEC® color or purcolor, up to a total thickness of 20mm thickness, on under-floor heating.

Is it true that rubber smells?

Like any other flooring, rubber has a typical odour. We neutralise this as much as possible in our production process and after installation it will reduce over time, but of course it helps if the rooms are well ventilated.

Which glue should I use?

All SPORTEC® products should be bonded with a 2-component PU adhesive. This is very resistant, especially for outdoor use.



What about fire protection? 🔥

Our floorings have different fire classes from E<sub>fl</sub> to C<sub>fl</sub>-s1. For all tenders we have a fitting solution.



How long does the floor last? ⌚

Typically 8-10 years under normal use.

What do I do with the floor when I want to change it after a few years?

You do not have to tear it out. Leave it simply as an acoustic underlay for the new floor, whether it be tiles, parquet, laminate or even SPORTEC®! The extra advantage of SPORTEC® Puzzle mats is that they can easily be exchanged.

Who is my contact person? 👤

On our homepage you will find the right contact person for your region. [www.kraiburg-relastec.com/sportec/en/contact-persons](http://www.kraiburg-relastec.com/sportec/en/contact-persons)





# SUSTAINABILITY

Corporate Carbon Footprint, Product Carbon Footprint, Energy Management, Social and economic sustainability at KRAIBURG Relastec



## Recycling of up to 60,000 t material

Every year, we process and recycle up to 60,000 tons of old tyres, closed-cell rubber foams and rubber production scrap.



## Reduction of CO<sub>2</sub> emissions

By using recycled rubber granulate, we save more than 130,000 tonnes of CO<sub>2</sub> emissions per year compared to virgin rubber.



## Corporate Carbon Footprint

The CCF was developed in accordance with the Greenhouse Gas Protocol audit.



## Coming soon: Product Carbon Footprint

The PCF is measured in accordance with ISO 14067 and ISO 14040/44.



## Energy management according to ISO 50001

Our energy management system is in accordance with ISO 50001 standards. Energy-relevant topics are taken into account in all processes of the organisation.



## Bronze Rating

The ecovadis rating covers numerous management systems, including environmental impact and sustainable procurement. More information: [www.ecovadis.com](http://www.ecovadis.com)



## Member of NEW LIFE initiative

The declared aim of NEW LIFE is to demonstrate the advantages of recycled products from End-of-Life Tyres (ELT) to the media, politicians and the general public and to motivate them to act sustainably.

More information: [www.initiative-new-life.de/en](http://www.initiative-new-life.de/en)



## Social sustainability

Acting in accordance with our values such as equal opportunities, social responsibility, respectful treatment and transparency, is our foundation for practicing social sustainability.



## Economic sustainability

As a family business, KRAIBURG Holding pursues a long-term strategy. Profits generated are used to a significant extent to make our holistic business model ever more efficient and future-proof.



# CORPORATE CULTURE

Defined values, social norms and guidelines, for common action and cooperation inside and outside KRAIBURG Relastec.



## Equal opportunities

We stand for equal opportunity, diversity, inclusion and religious diversity.



## Strong decision-making powers

We ensure speed in process handling, faster technology optimisations and lean processes.



## Social responsibility

Fair pay, collective bargaining, further training, career development, work-life integration.



## Responsible for our actions

We take responsibility for all decisions and results. Error acceptance and the strong will to correct and learn from them are firmly anchored in our culture.



## Respect

We are honest, reliable, respectful and trustworthy towards our colleagues and partners.



## Transparency

We practice open, transparent cooperation both inside and outside the company.



# WHAT SETS US APART



## Internationality

With an export quota of over 50%, we have already exported our products to over 100 countries.



## Easy complaint management

Transparent and optimised processes ensure rapid processing.



## Flexibility with customer requirements

We offer our partners customised options for packaging, labelling and delivery, packaging, labelling and delivery.



## Long-term relationships

We maintain long-term relationships with our customers and suppliers based on mutual respect and fairness.



## Marketing support

We provide you with the best possible support in the form of images or in the design of your documents.



## Personal contact persons

We do not hide behind support hotlines and contact forms. With us, you have personal, competent contact persons.



## Product quality

Our products meet the highest quality standards. They are durable, a perfect fit and made from high-quality raw materials.



## Innovation and product design

We continuously develop new products according to the requirements of our customers and the market.



» **MORE FROM YOUR FLOOR**



**Sports flooring and elastic layers**  
made from rubber granules

KRAIBURG Relastec GmbH & Co.KG  
Fuchsberger Straße 4 · D-29410 Salzwedel

Sales International:  
Tel. +49 (0) 8683 701 -340  
Fax +49 (0) 8683 701 -4340  
[sportec@kraiburg-relastec.com](mailto:sportec@kraiburg-relastec.com)  
[www.sportec-flooring.com](http://www.sportec-flooring.com)

No liability accepted for errors or omissions. Subject to changes without prior notice.  
© KRAIBURG Relastec GmbH & Co. KG 2023



Download the latest version  
of this brochure as PDF.